



The Paul Barret Jr. Library
Rhodes College
—1818—

#ColorOurCollections 2018



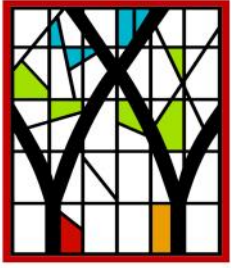
PAUL BARRET, JR. LIBRARY
RHODES COLLEGE

#ColorOurCollections 2018

This year's collection highlights the Farnsworth Shakespeare Print Collection. The collector of the prints in this collection was William Appleton Drown (1836-1890) of Philadelphia, PA. He was a manufacturer of umbrellas and parasols and spent part of each year in Europe buying silks in France and ivory, porcelain and carved wood in Switzerland. His love of Shakespeare's words and great thoughts grew into a study of Shakespearian actors. During his travels in Europe, he acquired an extensive collection of prints from engravings relating to Shakespeare and his plays.

The prints were inherited by his granddaughter, Elizabeth Phelps Farnsworth, wife of Rhodes College Board of Trustee, Sidney W. Farnsworth, of Memphis, TN. In 1953, Mrs. Farnsworth gave the prints as a gift to the College.

[DLYNX.RHODES.EDU](https://www.dlynx.rhodes.edu)



The Paul Barret Jr. Library
Rhodes College
—1918—

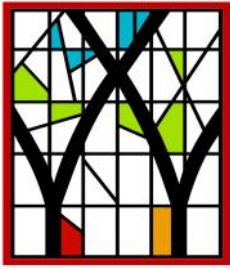
#ColorOurCollections 2018



The King, Helena, Bertram, and c. in All's Well That Ends Well, Act 5.

<https://dlynx.rhodes.edu/jspui/handle/10267/9366>

Farnsworth Shakespeare Print Collection



#ColorOurCollections 2018



Alexander kneels by Cressida as the Trojan princes pass by. Pandarus and Cressida also watch and discuss Troilus as the Trojan princes pass by them in *Troilus and Cressida* act 1 scene 2.

<https://dlynx.rhodes.edu/jspui/handle/10267/9441>

Farnsworth Shakespeare Print Collection



#ColorOurCollections 2018



TAMING OF THE SHREW
Petruchio, Katharina, Baptista, &c.
Act III. Scene I.

Petruchio, Katharina, Baptista, and company in Taming of the Shrew act 3 scene 1.

<https://dlynx.rhodes.edu/jspui/handle/10267/9423>

Farnsworth Shakespeare Print Collection



The Paul Barret Jr. Library
Rhodes College

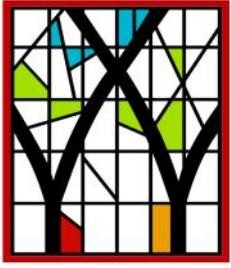
#ColorOurCollections 2018



I think Crab my dog, be the sourest natured dog that lives- Launce [character in Two Gentlemen of Verona]

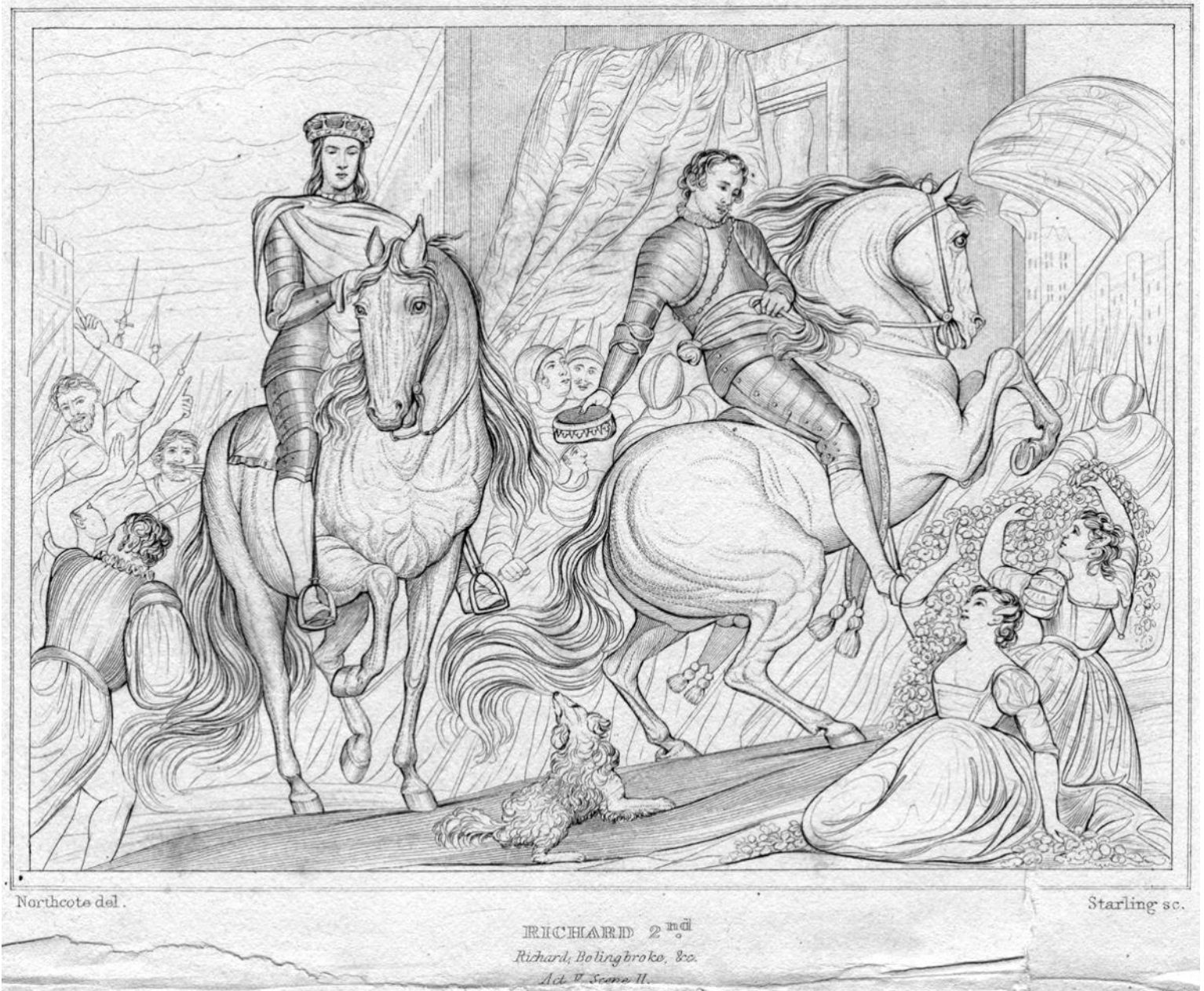
<https://dlynx.rhodes.edu/jspui/handle/10267/8989>

Farnsworth Shakespeare Print Collection



The Paul Barret Jr. Library
Rhodes College
—1918—

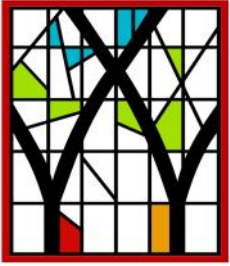
#ColorOurCollections 2018



Richard, Henry Bolingbroke and company march through the streets in Richard II Act 5 Scene 2.

<https://dlynx.rhodes.edu/jspui/handle/10267/9661>

Farnsworth Shakespeare Print Collection



The Paul Barret Jr. Library
Rhodes College
—1918—

#ColorOurCollections 2018



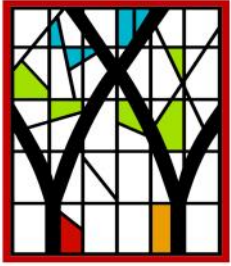
Wright del.

S.Watts sc

Richard II Act 5 Scene 5. Published by W. Pickering 57, Chancery Lane 1824.

<https://dlynx.rhodes.edu/jspui/handle/10267/9665>

Farnsworth Shakespeare Print Collection



The Paul Barret Jr. Library
Rhodes College
—1918—

#ColorOurCollections 2018



Mr. Henry Compton (1805-1877) in the role of Launce in Two Gentlemen of Verona Act 4 Scene 2

<https://dlynx.rhodes.edu/jspui/handle/10267/9030>

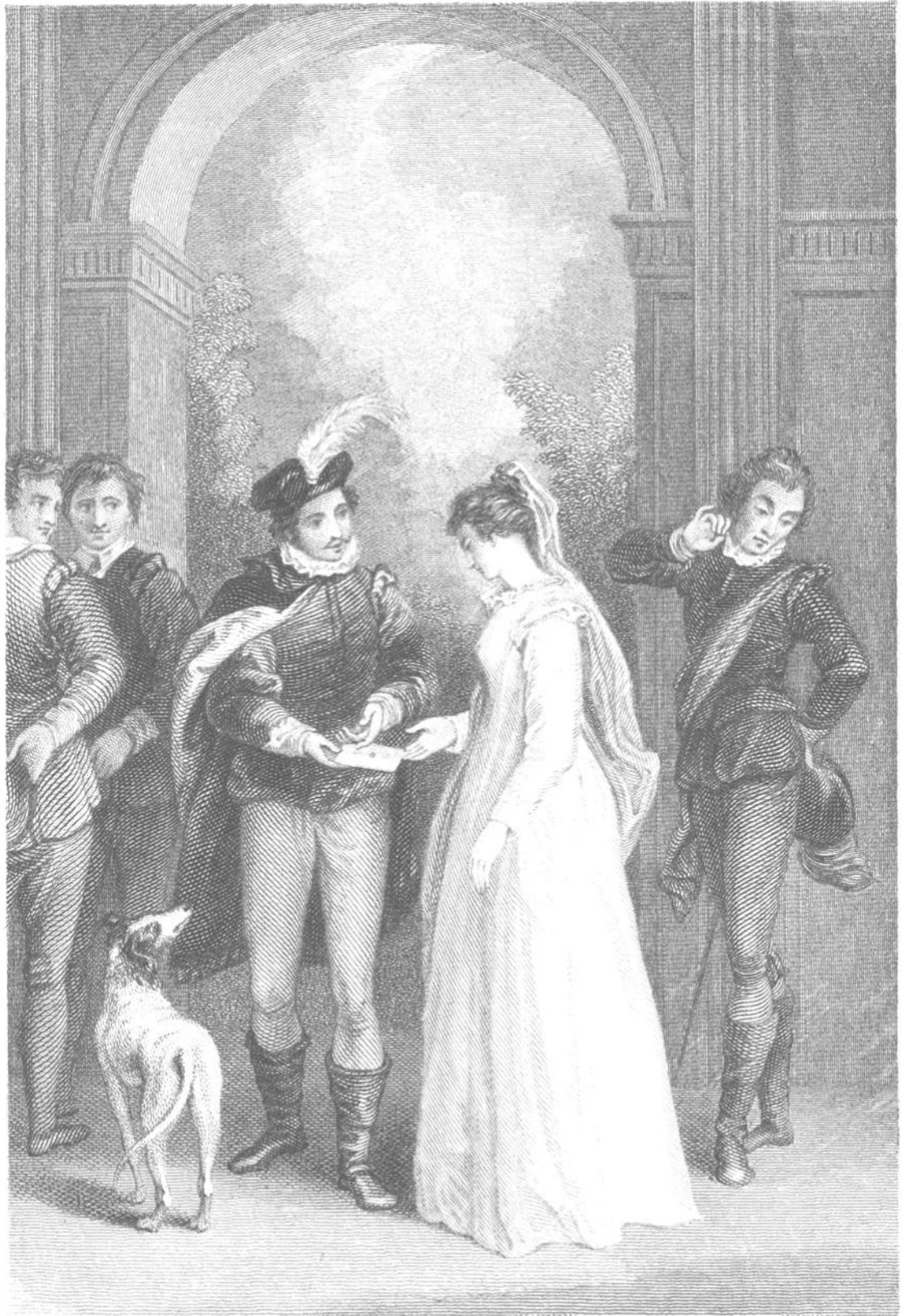
Farnsworth Shakespeare Print Collection

[sites.rhodes.edu/barret](https://www.facebook.com/rhodescollegebarretlibrary/) IG: @barret_library <https://www.facebook.com/rhodescollegebarretlibrary/>



The Paul Barret Jr. Library
Rhodes College
—1918—

#ColorOurCollections 2018



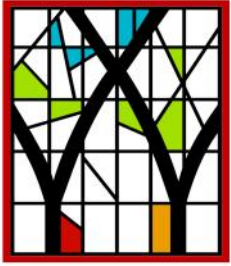
John W. W. W.

John W. W. W.

Bertram hands Helena a letter saying "This to my mother." in All's Well That Ends Well Act 2 Scene 5.

<https://dlynx.rhodes.edu/jspui/handle/10267/9371>

Farnsworth Shakespeare Print Collection



The Paul Barret Jr. Library
Rhodes College
—1918—

#ColorOurCollections 2018

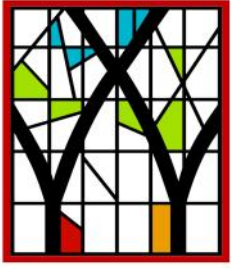


Antipholus of Ephesus, Dromeo, Courtezan Act IV. Scene IV

<https://dlynx.rhodes.edu/jspui/handle/10267/4929>

Farnsworth Shakespeare Print Collection

sites.rhodes.edu/barret IG: @barret_library <https://www.facebook.com/rhodescollegebarretlibrary/>



The Paul Barret Jr. Library
Rhodes College
—1918—

#ColorOurCollections 2018



by del.

Starbng sc.

WINTER'S TALE

*Florizel, Perdita, Polixenes, Camilla, &c.
Act IV. Scene III.*

Winter's Tale Act. IV. Scent III.

<https://dlynx.rhodes.edu/jspui/handle/10267/5020>

Farnsworth Shakespeare Print Collection