



"The Story of a Mother" from *The Fairy World* by Hans Christian Andersen. The World Publishing House, 1877.

#ColorOurCollections

This image is from the collection of



**Lake County Public Library**



"The Elfin Mound" from *The Fairy World* by Hans Christian Andersen. The World Publishing House, 1877.

For more coloring pages, visit [ColorOurCollections.org](https://ColorOurCollections.org)





THE WILD SWANS.

"The Wild Swans" from *The Fairy World* by Hans Christian Andersen. The World Publishing House, 1877.



*The Rubáiyát of Bridge* by Carolyn Wells. Harper & Brothers, 1909.





*The Rubáiyát of Bridge* by Carolyn Wells. Harper & Brothers, 1909.



*The Rubáiyát of Bridge* by Carolyn Wells. Harper & Brothers, 1909.





A LITTLE LATE!

"Early and Late." from *The World on Wheels and Other Sketches* by Benjamin Franklin Taylor. S. C. Griggs & Co., 1874.



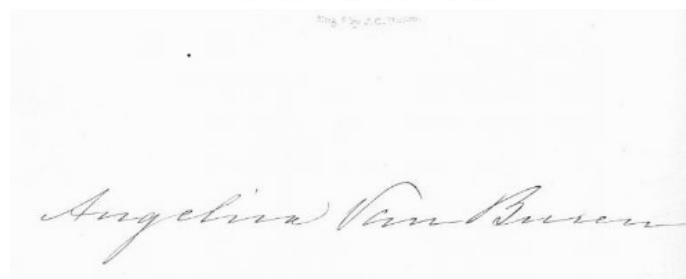
Engd by J.C. Buttre.

MARTHA WASHINGTON.

FROM STUART'S PICTURE

"Martha Washington" from *The Ladies of the White House or In the Home of the Presidents: Being a Complete History of the Social and Domestic Lives of the Presidents from Washington to Cleveland – 1789-1886*. Vol. I by Laura C. Holloway. Funk & Wagnalls. 1886.





"Angelica Singleton Van Buren" from *The Ladies of the White House or In the Home of the Presidents: Being a Complete History of the Social and Domestic Lives of the Presidents from Washington to Cleveland – 1789-1886. Vol. I* by Laura C. Holloway. Funk & Wagnalls. 1886.



MRS ABRAHAM LINCOLN

"Mrs. Lincoln" from *The Ladies of the White House or In the Home of the Presidents: Being a Complete History of the Social and Domestic Lives of the Presidents from Washington to Cleveland – 1789-1886*. Vol. II by Laura C. Holloway. Funk & Wagnalls. 1886.



#ColorOurCollections

This image is from the collection of



Lake County Public Library



HOME OF ABRAHAM LINCOLN AT SPRINGFIELD.

"Lincoln's Home" from *The Ladies of the White House or In the Home of the Presidents: Being a Complete History of the Social and Domestic Lives of the Presidents from Washington to Cleveland – 1789-1886*. Vol. II by Laura C. Holloway. Funk & Wagnalls. 1886.

For more coloring pages, visit [ColorOurCollections.org](https://ColorOurCollections.org)

Fig. 13.

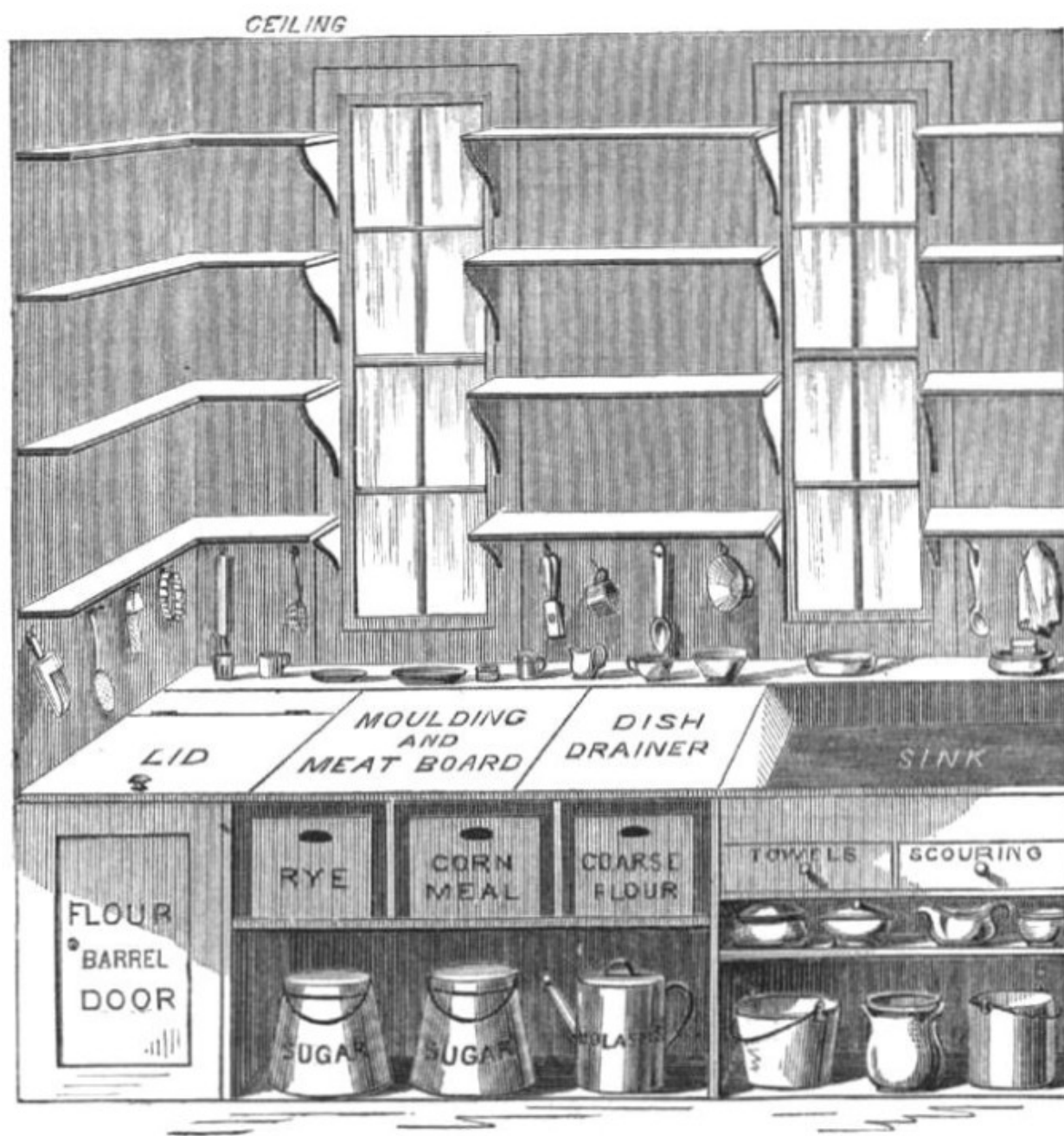


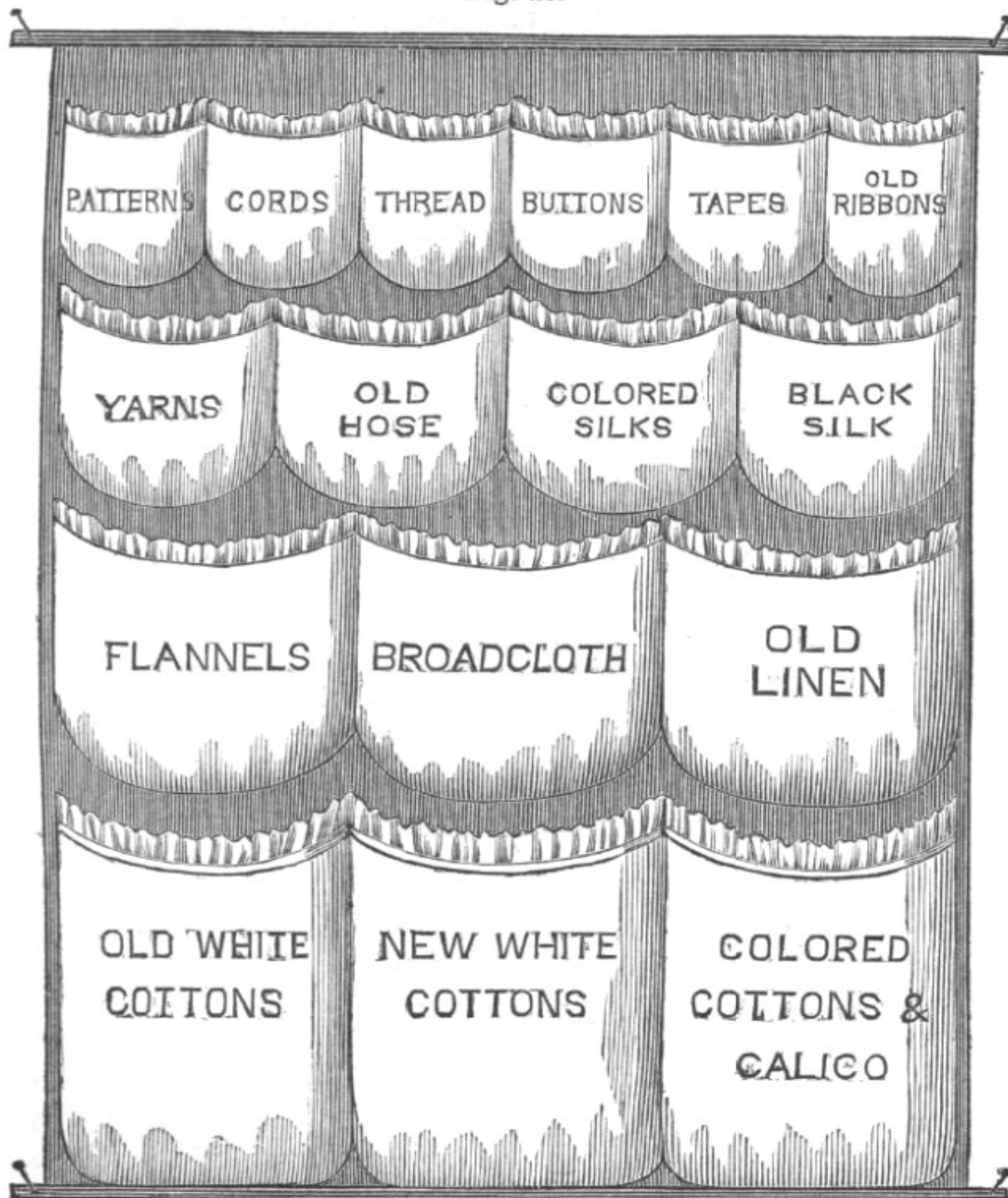
Fig. 13 is an enlarged plan of the sink and cooking-form. Two windows make a better circulation of air in

"A Christian House Fig. 13" from *The American Woman's Home or Domestic Science*. by Catherine E. Beecher and Harriet Beecher Stowe. J. B. Ford & Co. 1869.





Fig. 20.



"A Christian House Fig. 20" from *The American Woman's Home or Domestic Science*, by Catherine E. Beecher and Harriet Beecher Stowe. J. B. Ford & Co. 1869.

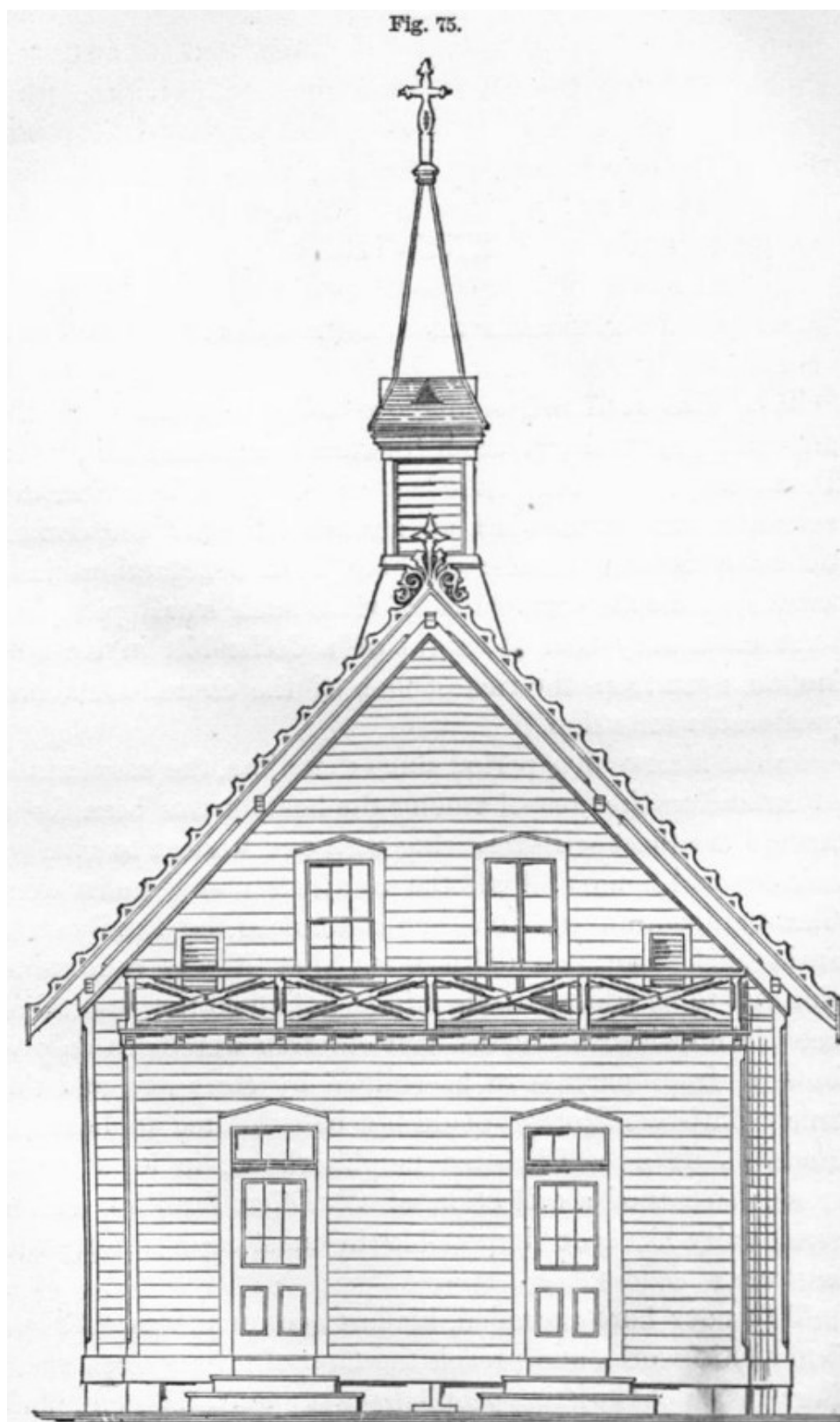


Fig. 45.



"Home Decoration Fig. 45" from *The American Woman's Home or Domestic Science*. by Catherine E. Beecher and Harriet Beecher Stowe. J. B. Ford & Co. 1869.





"The Christian Neighborhood Fig. 75" from *The American Woman's Home or Domestic Science*. by Catherine E. Beecher and Harriet Beecher Stowe. J. B. Ford & Co. 1869.