



REDWOOD LIBRARY & ATHENÆUM

chartered 1747

Redwood Library & Athenæum

2018 Coloring Book

Twitter: @RedwoodLibrary

Facebook: @RedwoodLibrary

Instagram: theredwoodlibrary

Tumblr: redwoodlibrary.tumblr.com

Please @ or forward on any of our pics you color and we'll post them!

For other collections' content, visit ColorOurCollections.org, or search
Twitter, Instagram, Tumblr, or Fac
ebook for #Colorourcollections.

Thank you to the New York Academy of Medicine (@nyamhistory) for
organizing this event!



LA MORT ET LE BUCHERON. Fable XVI.

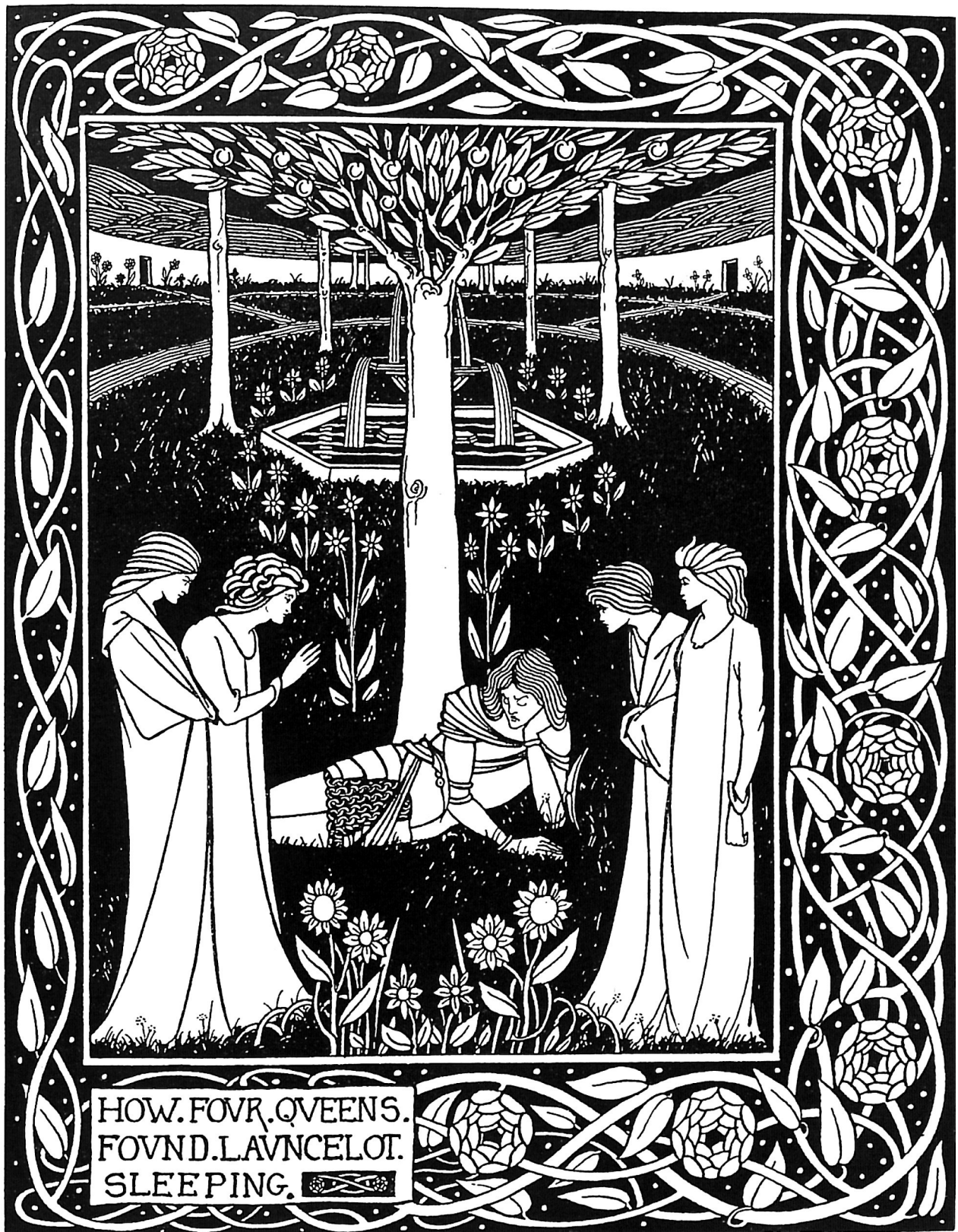
J.B. Oudry inv.

Lud. Koenig sculp.

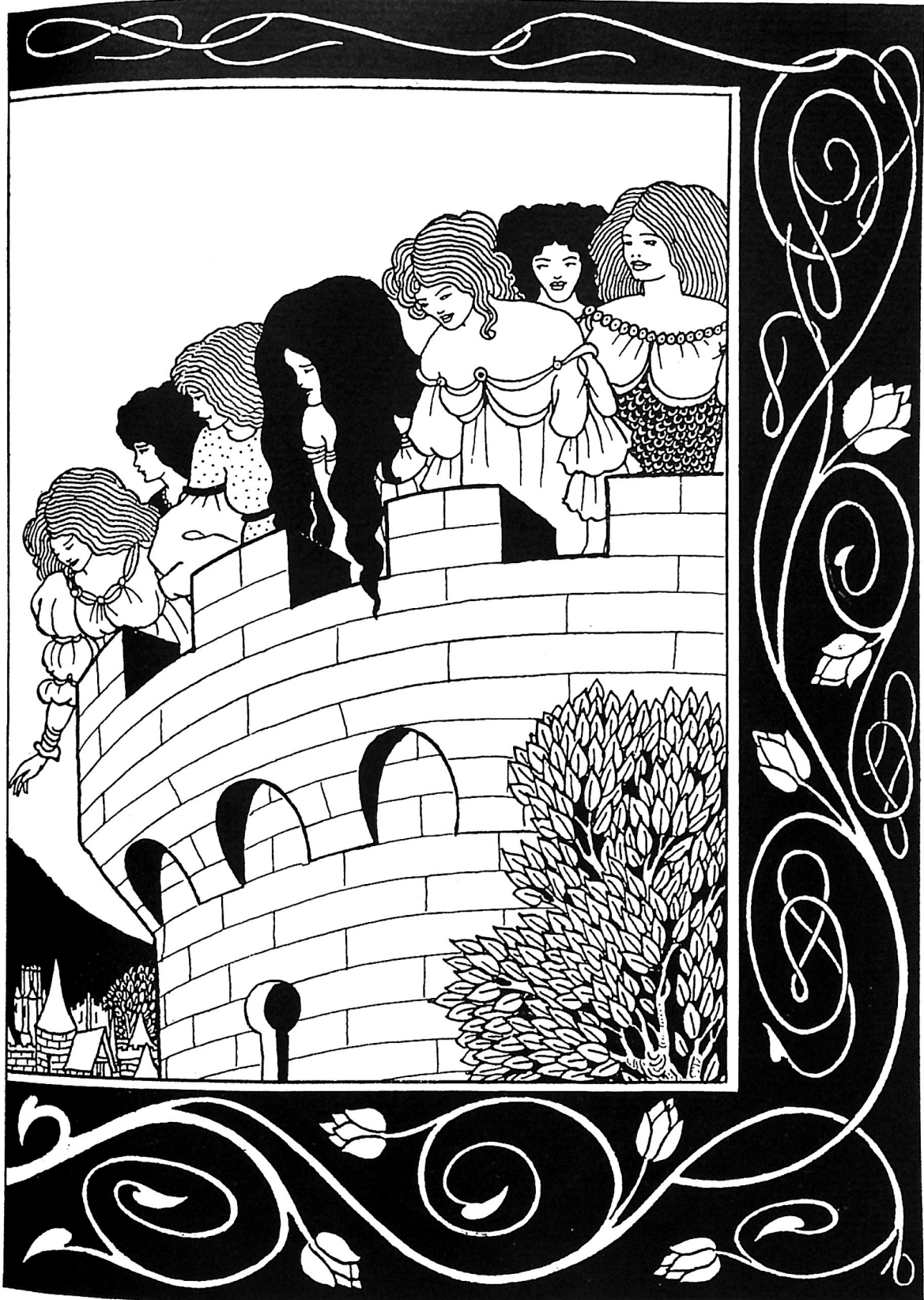
From: *Fables choisies, mises en vers* / par J. de la Fontaine. A Paris: Chez Desaint & Saillant; chez Durand, MDCCLV (1755)



From: *Fables choisies, mises en vers* / par J. de la Fontaine. A Paris: Chez Desaint & Saillant; chez Durand, MDCCLV (1755)



From: The birth, life and acts of King Arthur of his noble knights of the Round table [...] / The text as written by Sir Thomas Malory[...] embellished with many original designs by Aubrey Beardsley. London: Dent, MCMXXVII (1927)



From: The birth, life and acts of King Arthur of his noble knights of the Round table [...] / The text as written by Sir Thomas Malory[...] embellished with many original designs by Aubrey Beardsley. London: Dent, MCMXXVII (1927)



H.L. Stephens del.

Julius Bien lith.

So off he set with his opera hat.
And on the road he met with a rat.

From: Nursery Rhymes / Illustrated by Henry L. Stephens. New York: Lithographed by Julius Bien, 1866



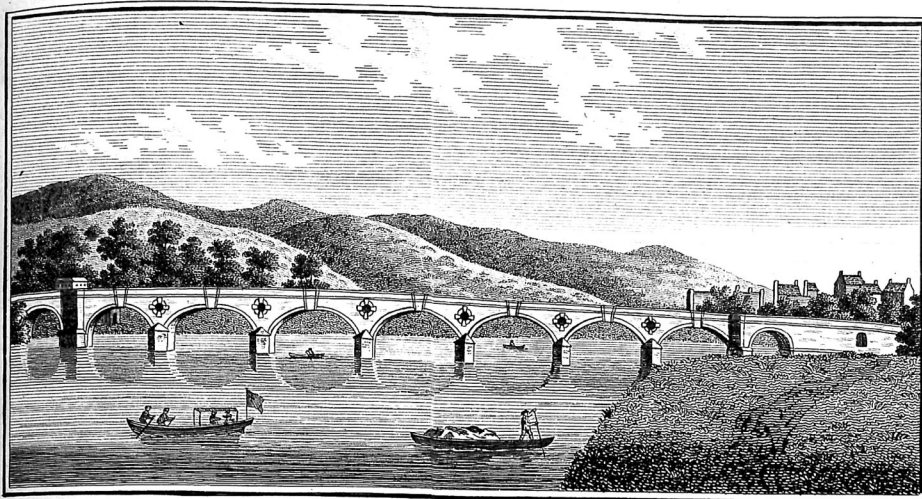
H.L. Stephens del.

Julius Bien lith.

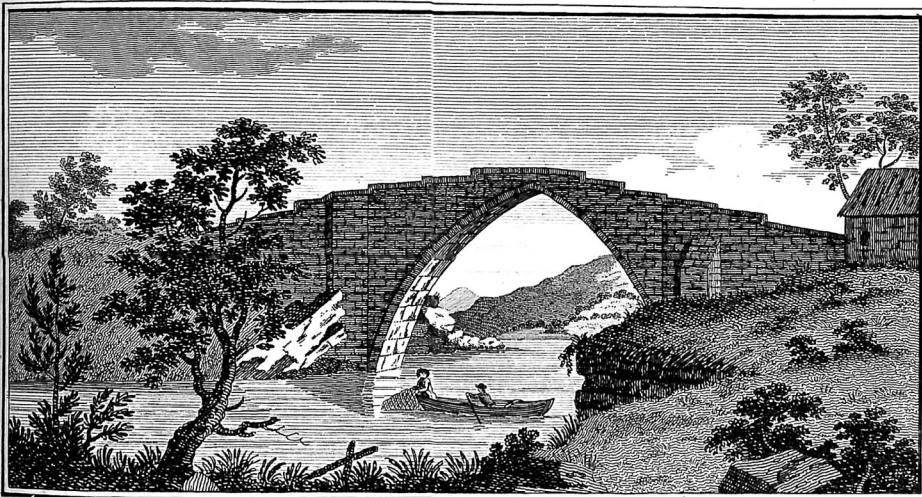
Who'll sing a Psalm?
I, said the Thrush

As he sat in the bush,
I'll sing a Psalm.

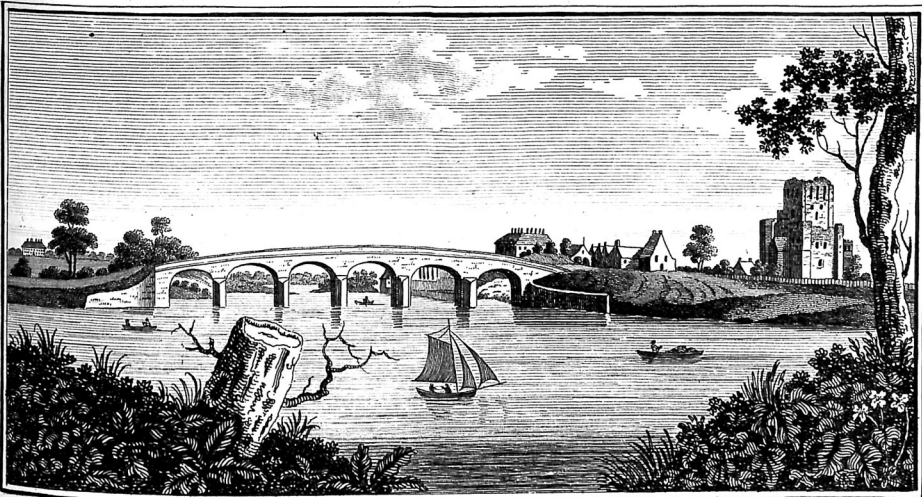
From: Nursery Rhymes / Illustrated by Henry L. Stephens. New York: Lithographed by Julius Bien, 1866



PERTH BRIDGE, *in* PERTHSHIRE.



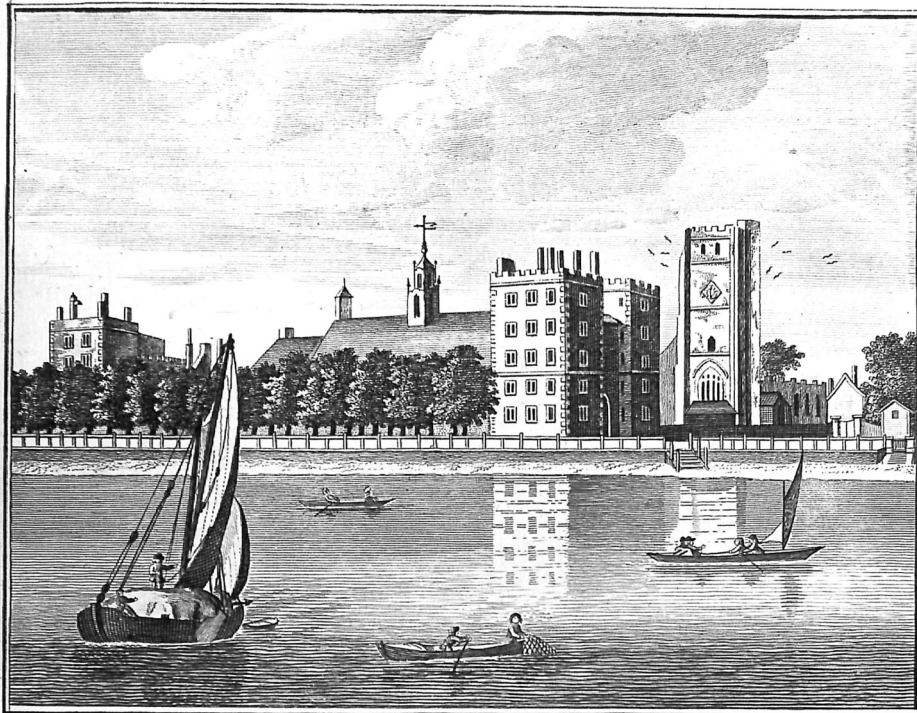
The BRIDGE of DON, *in* ABERDEENSHIRE.



KELSO BRIDGE, *in* ROXBURGHSHIRE. &c

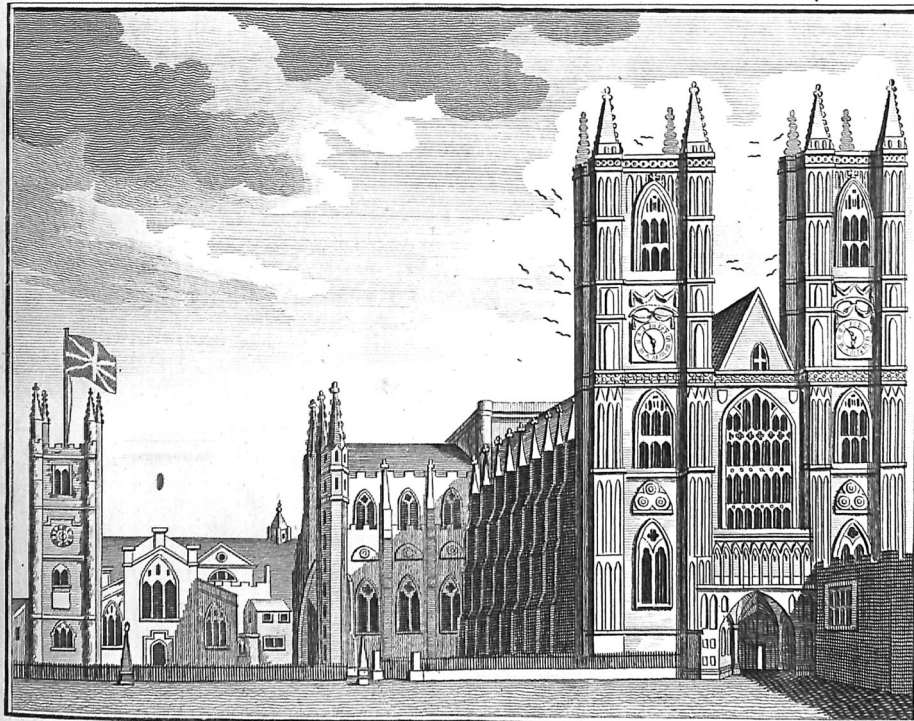
Eastgate sculp.

Published according to Act of Parliament, by Alex. Hogg, N^o 16, Paternoster Row.



Taylor Sculp^t

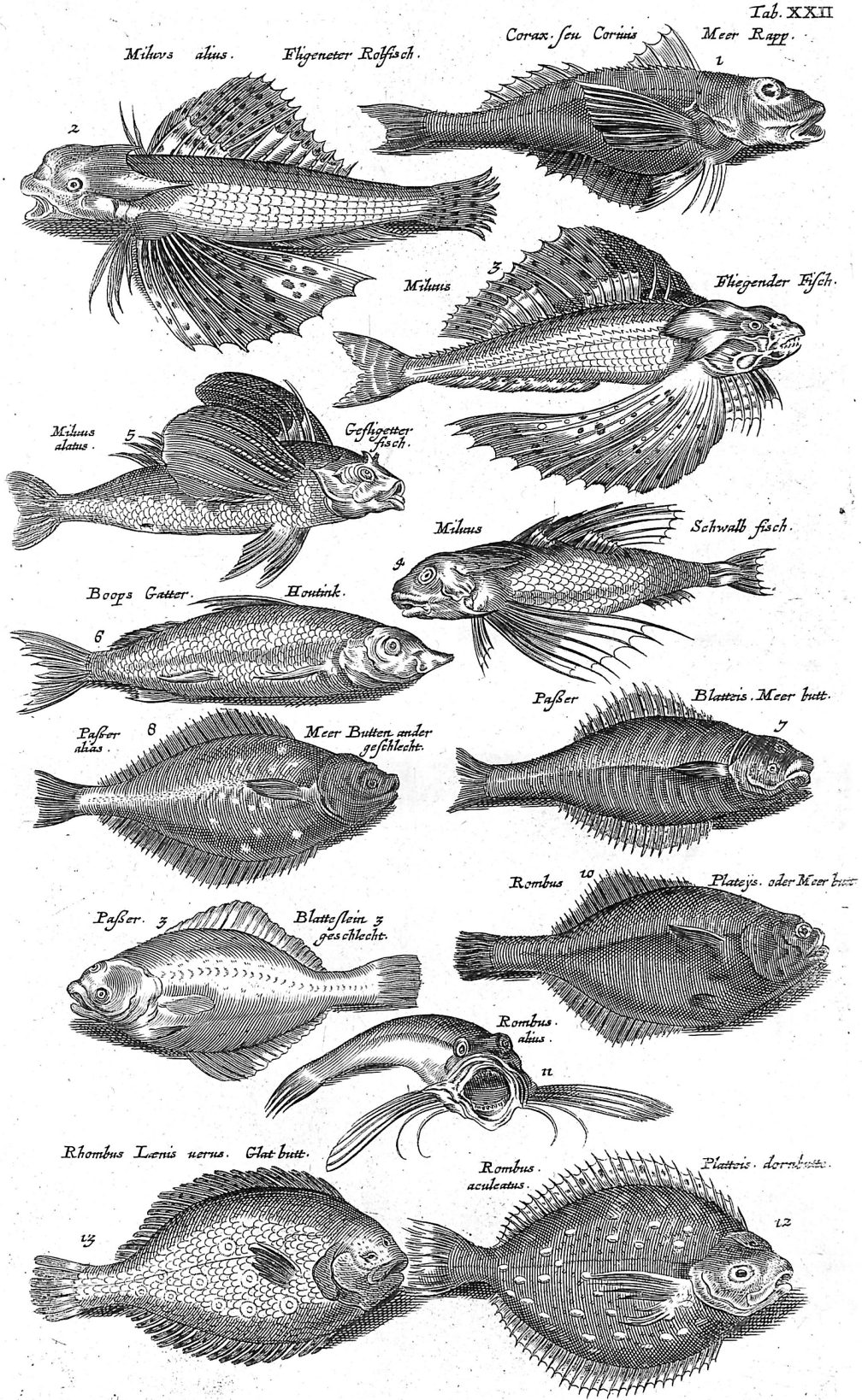
View of LAMBETH PALACE in Surrey.
Published according to Act of Parliament, by Alex. Hogg, N^o 16, Paternoster Row.



Taylor Sculp^t

View of WESTMINSTER ABBEY & S^t Margaret's Church adjoining.

From: Historical Descriptions of New and Elegant Picturesque Views of the Antiquities of England and Wales / [ed.] Henry Boswell. London: Printed for Alex. Hogg, 1786



From: *Historiae naturalis de piscibus et cetis* / Johannes Jonstonus concinnavit. Amstelodami: Apud Ioannem Iacobi fil. Schipper, MDCLVII (1657)