

¶ The fourth Booke of Dystillations,
conteyning many singular secrete
 Remedies.



¶.¶.¶.

OE

EMINENT WOMEN OF THE AGE.



FLORENCE NIGHTINGALE.

James Parton 1822-1891. *Eminent women of the age.* Hartford: S. M. Betts, 1868.

Plantago, Plantain, Piantagine.



Conrad Gessner 1516-1565., *Thesaurus
Euonymi Philatri de remediis secretis.*
Lugduni: Apud Antonium Vincentium,
1555.

George de Tarnowsky 1873-1942. *Military surgery of the zone of the advance*. Philadelphia: Lea & Febiger, 1918.

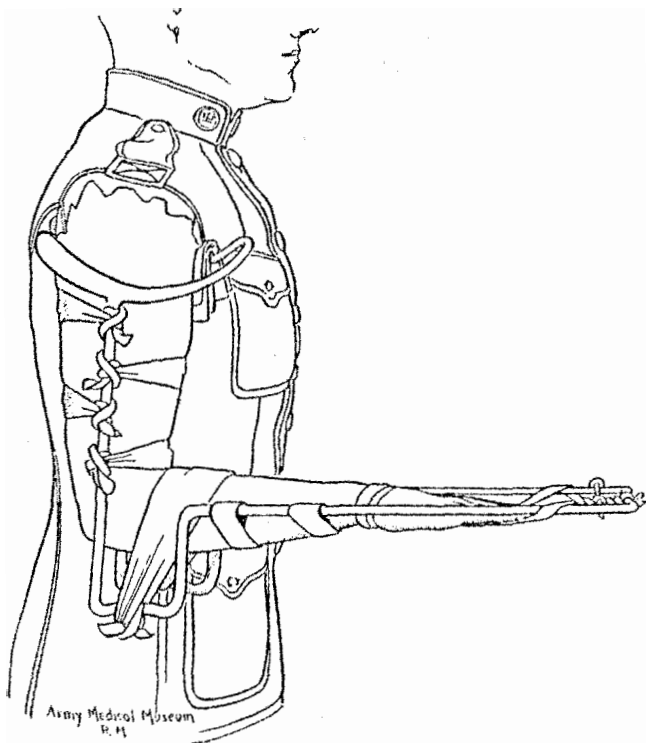


FIG. 4.—Jones's humerus traction splint applied.



would be viewed by an equal multitude of savage children.



It is one of the misfortunes of Civilization, that it has too many amusing and exciting things for the mouth to say, and

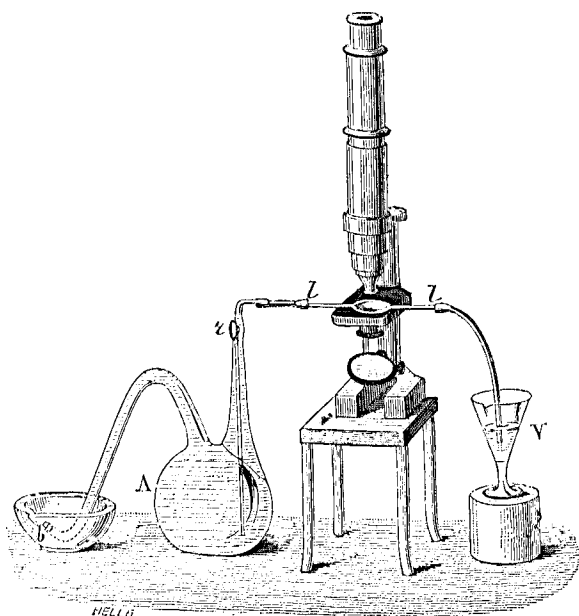
une goutte du liquide trouble. Voici la légende du dessin (fig. 70), telle que je la trouve dans mes notes d'observa-

Fig. 70.



tions : foule de vibrions très-agiles, assez même pour qu'on ait peine à suivre de l'œil leurs mouvements. J'en vois deux qui forment chaîne et paraissent faire effort pour se détacher. Évidemment un fil muqueux, gélatiniforme, invisible, les réunit,

Fig. 71.



car voilà qu'à la suite de leurs efforts ils ne se touchent plus. Cependant ils ne sont pas disjoints ; l'un est entraîné dans tous les mouvements de l'autre. Les voilà séparés, et ils s'éloignent chacun de son côté, bien plus agiles et rapides qu'auparavant.

W The Hips.
Hips hot
Hip strachid.

X The Flank.
paining Broken
Wind Chest Found
and light Belly'd.
x Navel gall.

Y The Reins;
Sway'd Back

Z The Withers.
the Withers galled
or the Shoulder
Strain'd.

A Diseases of
of Head
the Staggers
Madness &c.

B The Diseases of
the Eyes. Lunatick
or Moon Eye.
Rheum &c.

C The Nose.
Hemorrhage of
Blood Cold Pain
Strangler Gland
ers.

D The Mouth.
Barks Woolfs
Teeth Lampas.

V The Fundament
Worms Low or Lo
arnes Molten Gr
eage of falling of
Fundament.

W Stones bruised
or Hardend
Swelled or
Shrunk. &c.

S The Yard.
Pain pipe or Strang
ry Pissing Blood

R The Trough or ham
Trough Strain'd may
Sinner above the
Trough hurts Trough
Dony Spavin Falculator
& Cramp & Stifle hurt.

Q The Shank.
Rats Tail Mules
Scratcher &c.
Kib'd Heels.

P The Hind Par
terns. Chunks
& Crivices hard
Naryl Excrescences
paprone field knots

O The Hind Foot
Figs & other
Spungy Excrescen
ces.

N Hoof & foot sol
es painted & Subalt
hoof bound hoof
Tershil Nunnegs.

Casting of the
hoof false
Quarters foot
Prick'd.

A Table of Diseases.

The Letters of the Alphabet
Directing to the Parts affected.



E The Orvet and
Throat. The Fives,
Stranglers and
Stag evil &c.

F The Counter.
the Anticor, pal
pitation at the
Heart.

G The Bending of
the Fore Leg.
Malender. &c.

H The Shank.
Windgalls &c.

I The Back Sinner.
Attaint upper
or over reach ore
& Back Sinner.

K The Heel.
Attaint nether or
over reach upon
the Heel.

L The Pastern.
Ring bone &c.

M Coronet.
Tread or Ulcer
upon the Coronet
Quitter Bone.

The FARRIERS new GUIDE.



Instruments & Utensils

Figura I^{ma}

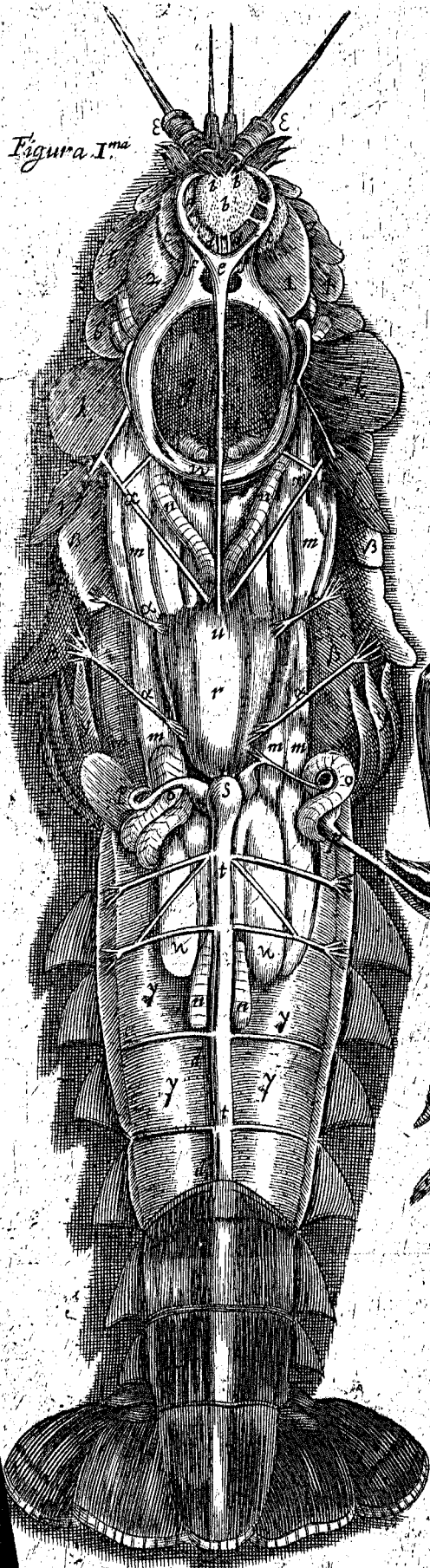


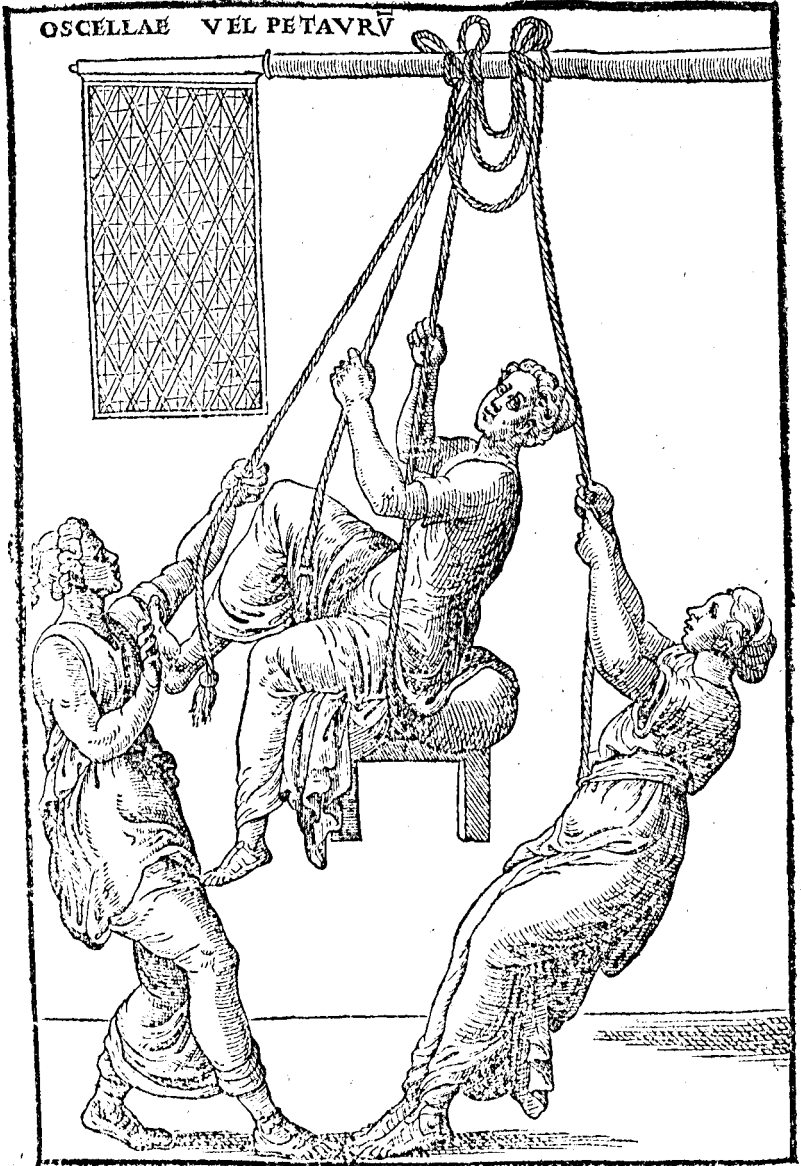
Fig. II^{da}



Fig. III^{ta}



Thomas Willis 1621-1675; *De anima brutorum
 quae hominis vitalis ac sensitiva est.* Genevae
 Apud Samuelem de Tournes, 1676.



Quomodo plumbeus globus immissus extrahatur.



Brachia

Andreas Vesalius 1514-1564. *Chirurgia magna*. Venetiis : Ex Officina Valgrisiana, 1569.