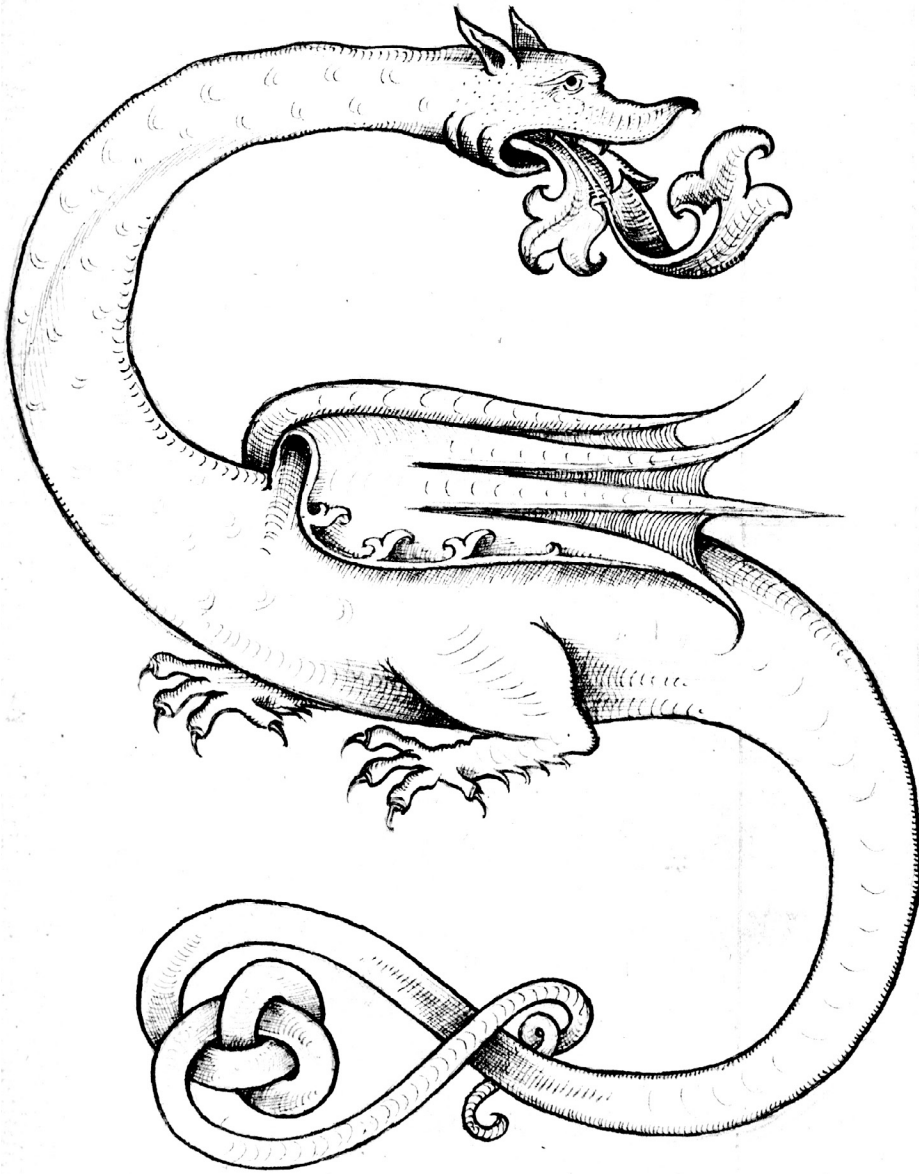




Bookplate designed by printmaker and illustrator Ephraim Mose Lilien, ca. 1900. Case Wing Z 481 .507.



SANT PRESERTES  
et futuri me' d'illumin' Peterfome Mil  
dedisse, concessisse. & hac presenti charta.

This letter "S" appears in John Scottowe's calligraphy specimen book of ornamental capitals. 1592. Wing MS ZW 545 .S431.

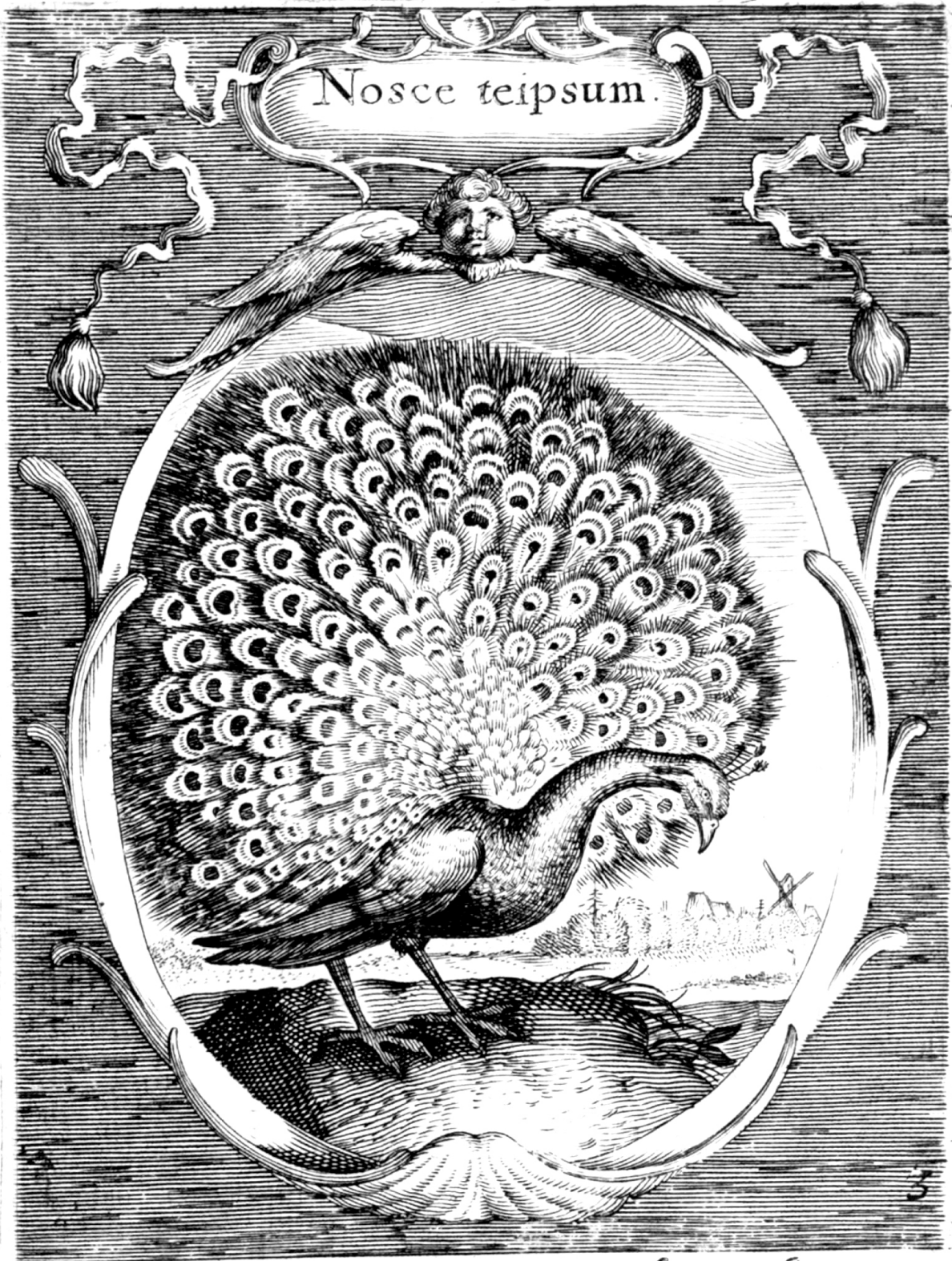
# TYPVS ORBIS VNIVERSALIS



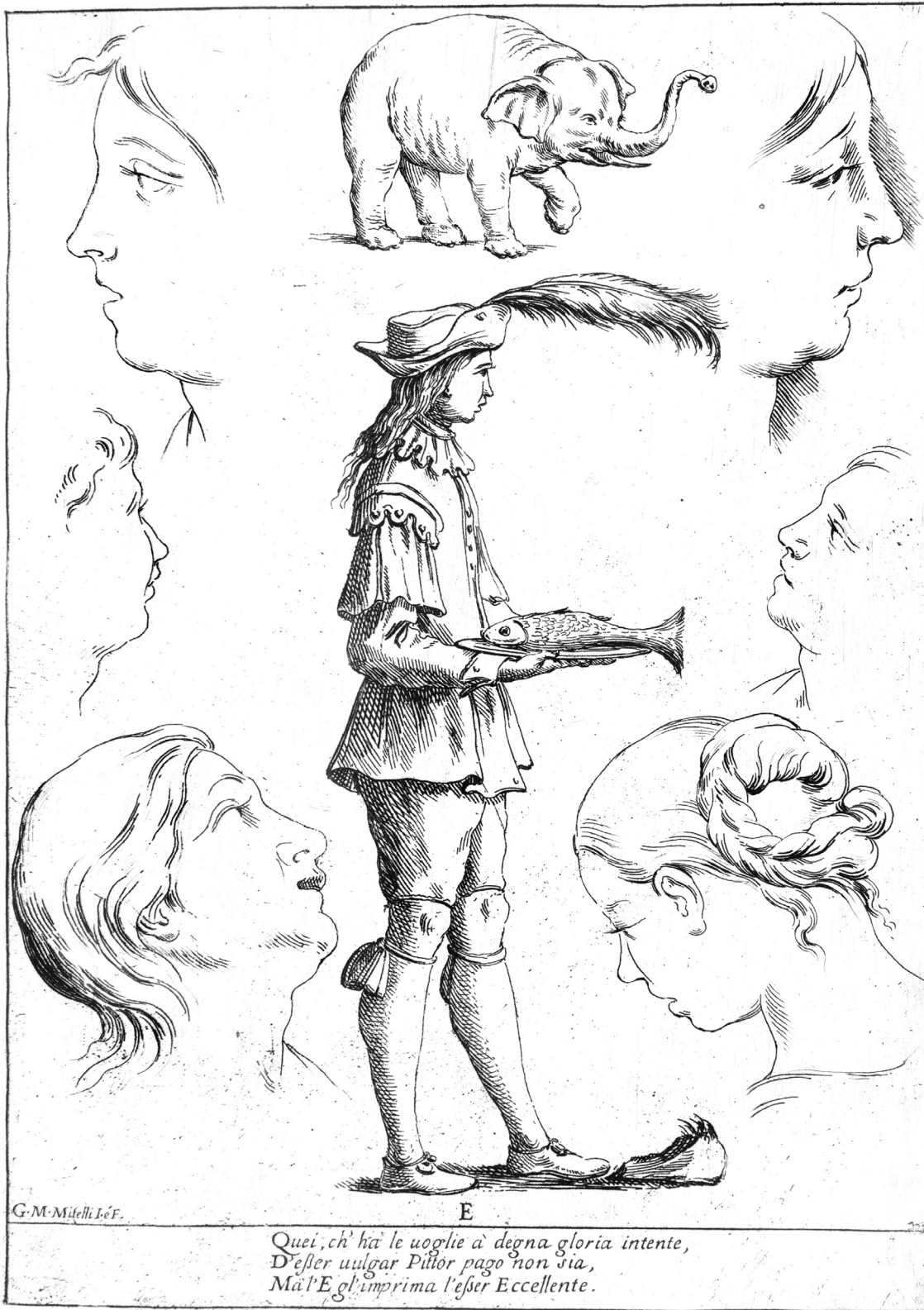
1540 printing of Ptolemy's *Geographia universalis*. Case folio Y 642 .P895.



Woodcut illustration from a late 15th-century edition of the plays of Terence. Inc. 8602.



From a 1617 emblem book, illustrating civic virtues, by Georg Remus. Case W 1025 .446.



The letter "E," as imagined by Giuseppe Maria Mitelli in "Alfabeto in sogno" ("Dream Alphabet"). 1683. Wing folio ZW 14 .M692.



Pen-and-ink illustration by John Tenniel for *Alice's Adventures in Wonderland*, 1865. Case 4A 878.