

Lliwio Ein

Casgliadau* Dyma'ch gwahodd i lawrlwytho lluniau o'n llyfrau prin, eu lliwio a'u rhannu ar y cyfryngau cymdeithasol rhwng 4 a 8 Chwefror 2019.

Defnyddiwch yr hashnod **#lliwioeincasgliadau**

#colourcollections i weld casgliadau o bob cwr o'r byd a thagiwch ni **@WHELFed**

A large, stylized illustration of a globe. The globe is rendered with horizontal lines and is surrounded by various symbols: a pencil, a compass, a sailboat, and a lighthouse. The text "Blwyddyn Darganfod Year of Discovery" is overlaid on the globe in a large, bold, purple font.

Blwyddyn Darganfod Year of Discovery

Colour Our

Collections* invites you to download images from our rare book collections, colour them in and share them on social media from the 4-8 February 2019 with the hashtag **#lliwioeincasgliadau #colourcollections** (use the American spelling of colour to view collections from across the world) and tag us **@WHELFed**

#LliwioEinCasgliadau
#ColorOurCollections

@WHELFed  WHELF

WHELF

Grŵp yw Fforwm Llyfrgelloedd Addysg Uwch Cymru (WHELF) sy'n cynnwys sefydliadau addysg uwch Cymreig, yn ogystal â'r Llyfrgell Genedlaethol, Amgueddfa Cymru, Cyfoeth Naturiol Cymru a'r Brifysgol Agored yng Nghymru.

The Wales Higher Education Libraries Forum (WHELF) is a grouping of higher education institutions in Wales, along with the National Library of Wales, Amgueddfa Cymru-National Museum Wales, Natural Resources Wales and the Open University in Wales.

Sefydliadau sy'n cymryd rhan / Participating institutions

Amgueddfa Cymru – National Museum Wales

Prifysgol Bangor / Bangor University

Prifysgol Caerdydd / Cardiff University

Llyfrgell Genedlaethol Cymru / National Library of Wales

Prifysgol Abertawe / Swansea University

Prifysgol De Cymru / University of South Wales

Prifysgol Cymru Y Drindod Dewi Sant / University of Wales Trinity Saint David

national
museum
wales
amgueddfa
cymru



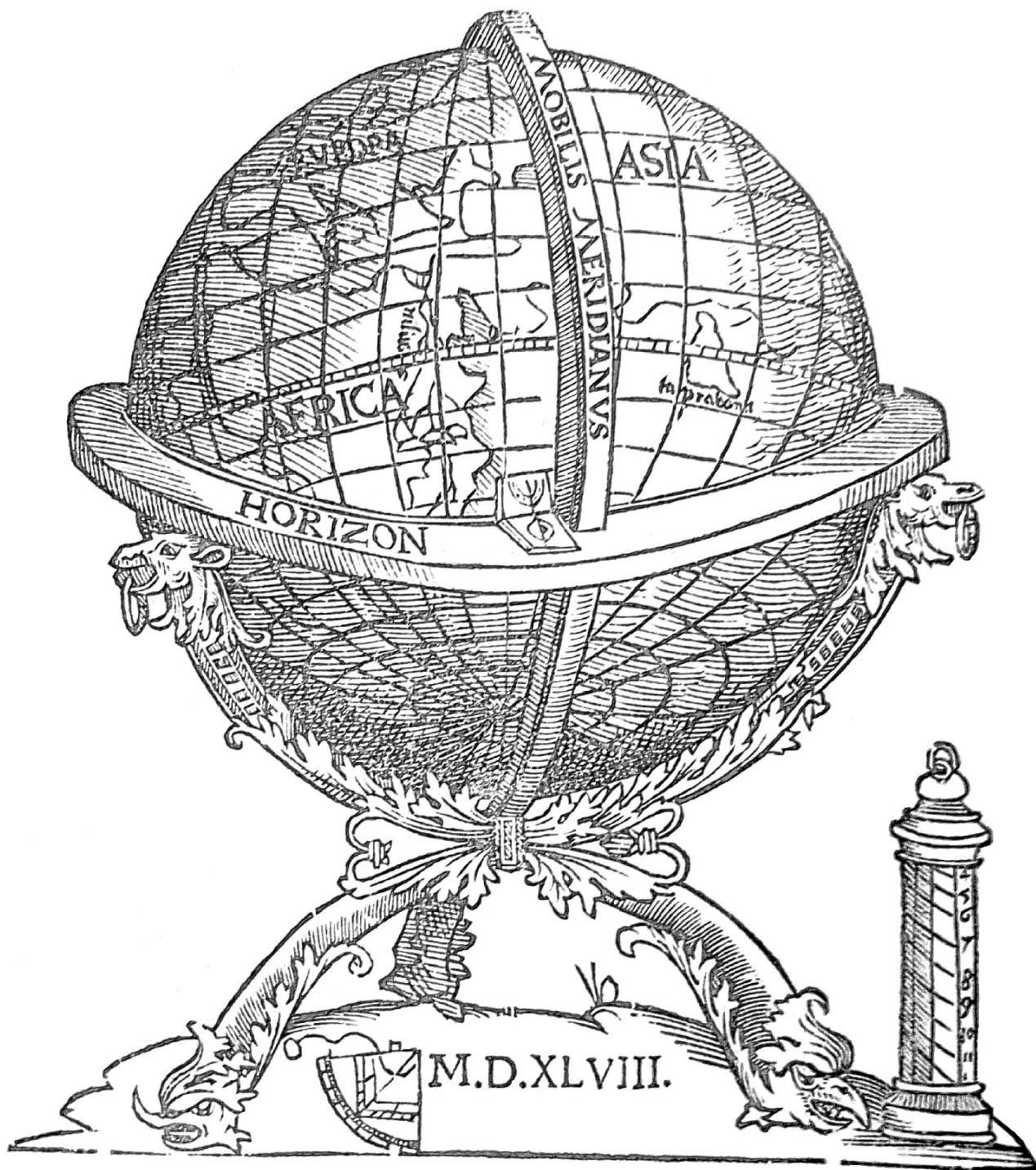
#LliwioEinCasgliadau
#ColorOurCollections

@Amgueddfa_Lib

national
museum
wales
amgueddfa
cymru



Noddir gan
Lywodraeth Cymru
Sponsored by
Welsh Government



Petrus Apianus, *Libro dela cosmographia de Pedro Apiano ... augmetado por el doctissimo varon Gemma Frisio ...* 1548

Am fwy o dudalennau i'w lliwio, ewch i ColorOurCollections.org
For more colouring pages, visit ColorOurCollections.org

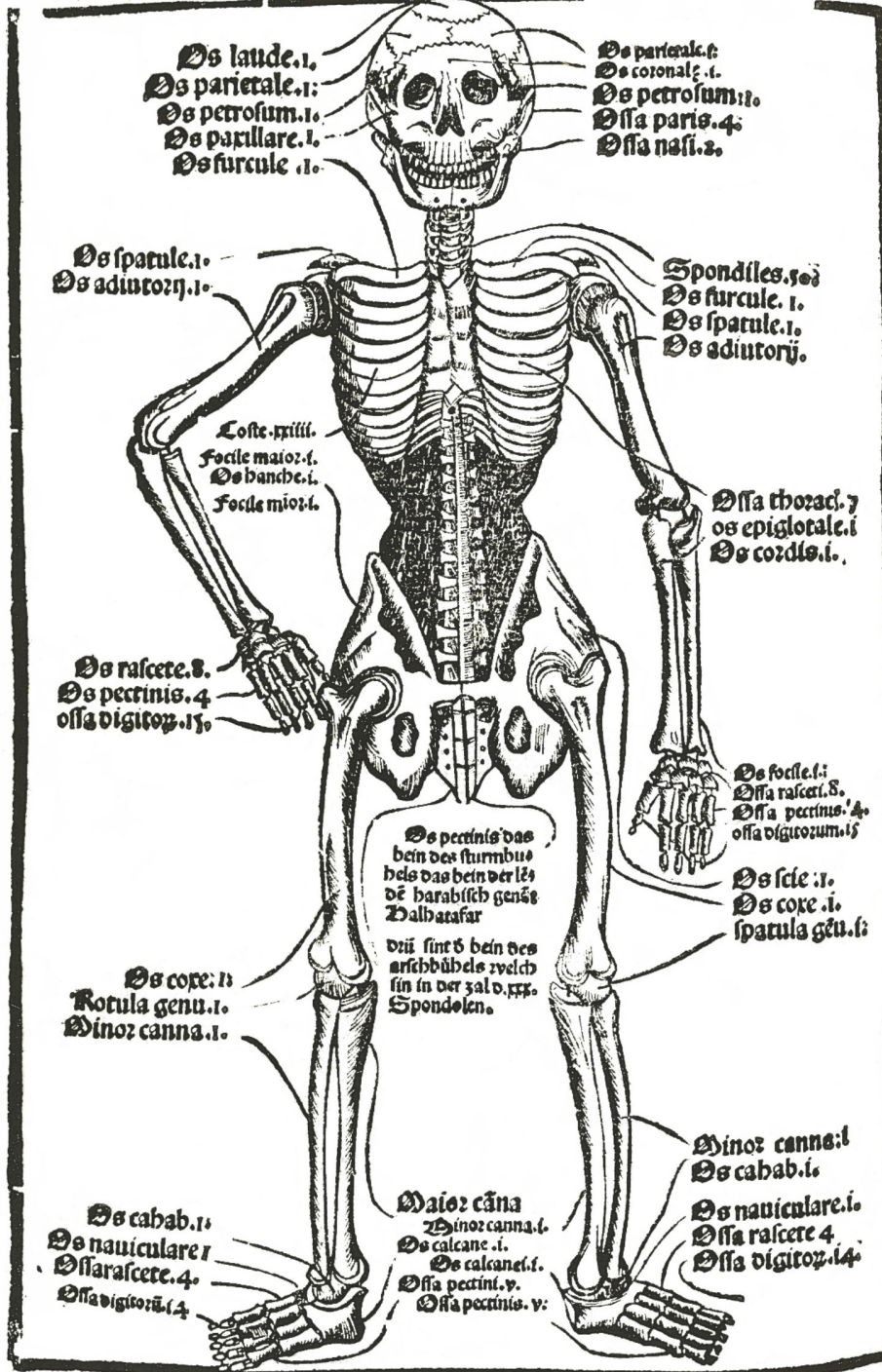
#LliwioEinCasgliadau
#ColorOurCollections

@Amgueddfa_Lib

national
museum
wales
amgueddfa
cymru



Homo natus de muliere breui uiuens tempore.



[H]ortus sanitatis. De herbis et plantis. De animalibus et reptilibus. De avibus et volatilibus. De piscibus et natatilibus. De lapidibus et in terre venis nascentibus. Urinis et earum speciebus ... Strasbourg, 1517

#LliwioEinCasgliadau
#ColorOurCollections

@BangorUniLib



[Registered for transmission abroad.]



Y Punch Cymraeg
Tudalen flaen/Front page, rhif/issue 3, 2 Ebrill/April 1859

Am fwy o dudalennau i'w lliwio, ewch i ColorOurCollections.org
For more colouring pages, visit ColorOurCollections.org

#LliwioEinCasgliadau
#ColorOurCollections

@BangorUniLib



The Landing of William the Conqueror.

Gilbert Abbott A'Beckett, *The Comic History of England*, 1864
Darluniau gan / Illustrations by John Leech

Am fwy o dudalennau i'w lliwio, ewch i [ColorOurCollections.org](https://www.ColorOurCollections.org)
For more colouring pages, visit [ColorOurCollections.org](https://www.ColorOurCollections.org)

@CUSpecialColls

Daw'r ddelwedd hon o gasgliad / This image is from the collection of

#LiwioEinCasgliadau
#ColorOurCollections



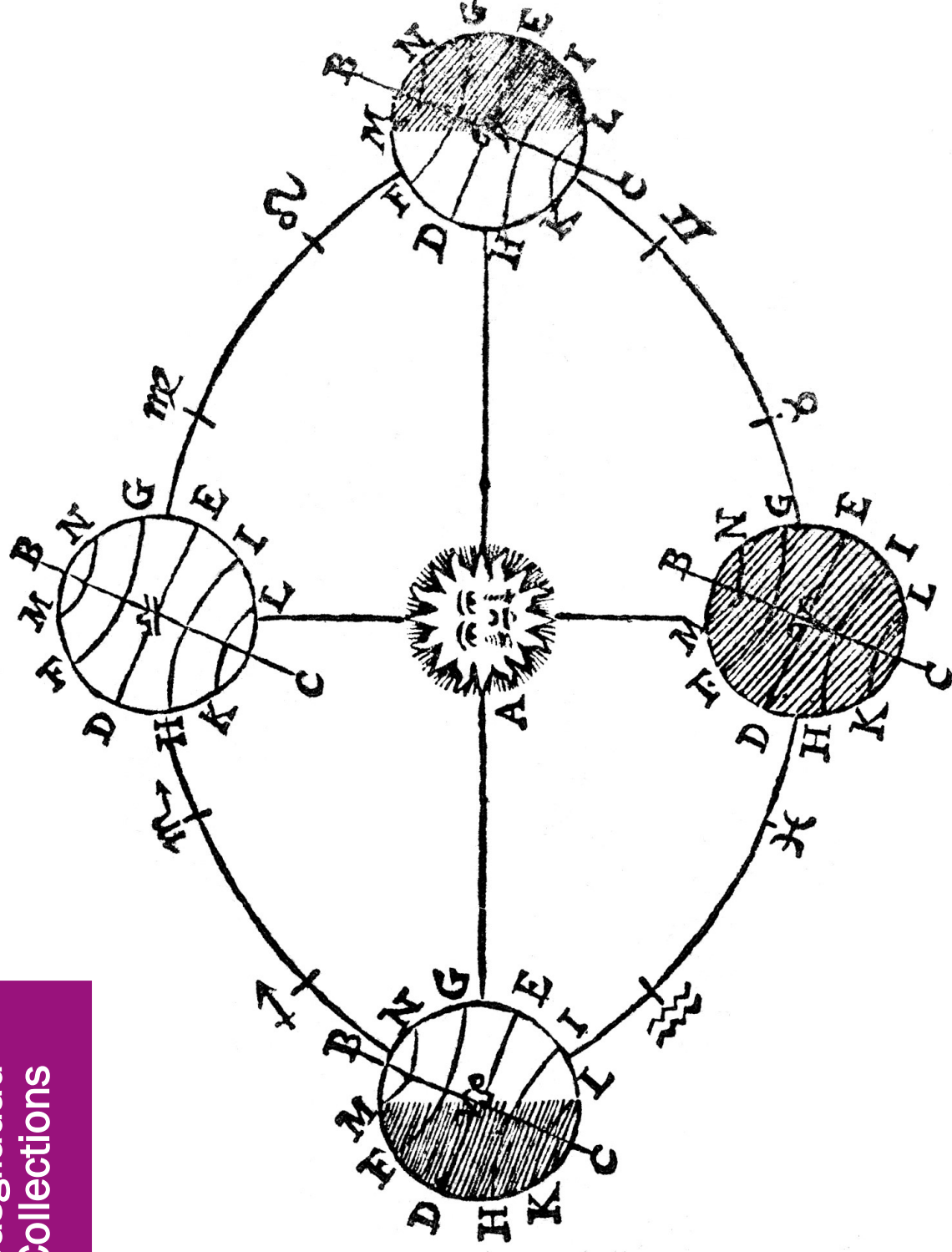
Jean A. Brillat-Savarin, *The physiology of taste, or, Meditations on transcendental gastronomy*, 1925
[grafiad gan / engraving by Andrew Johnson & rhagymadrodd gan / introduction by Arthur Machen

Am fwy o dudalennau i'w lliwio, ewch i ColorOurCollections.org / For more colouring pages, visit ColorOurCollections.org

CARDIFF
UNIVERSITY

PRIFYSGOL
CAERDYDD

#LiwioEinCasgliadau
#ColorOurCollections



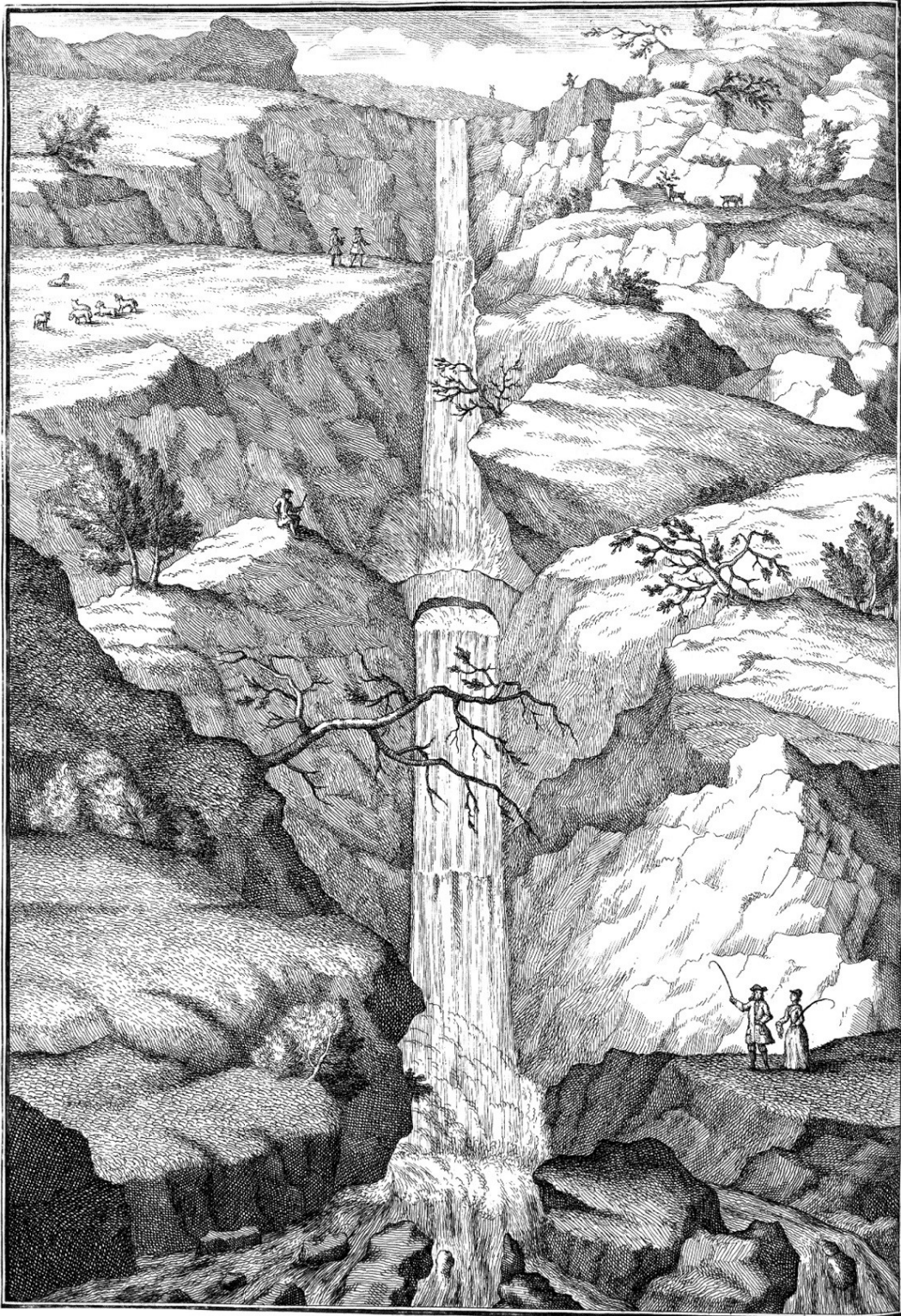
John Wilkins, *The first book. The discovery of a new world or, A discourse tending to prove, that 'tis probably there may be another habitable world in the moone: with a discourse concerning the possibility of a passage*, 1684

#LliwioEinCasgliadau
#ColorOurCollections



LLYFRGELL GENEDLAETHOL CYMRU
THE NATIONAL LIBRARY OF WALES

@LIGCymru @NLWales

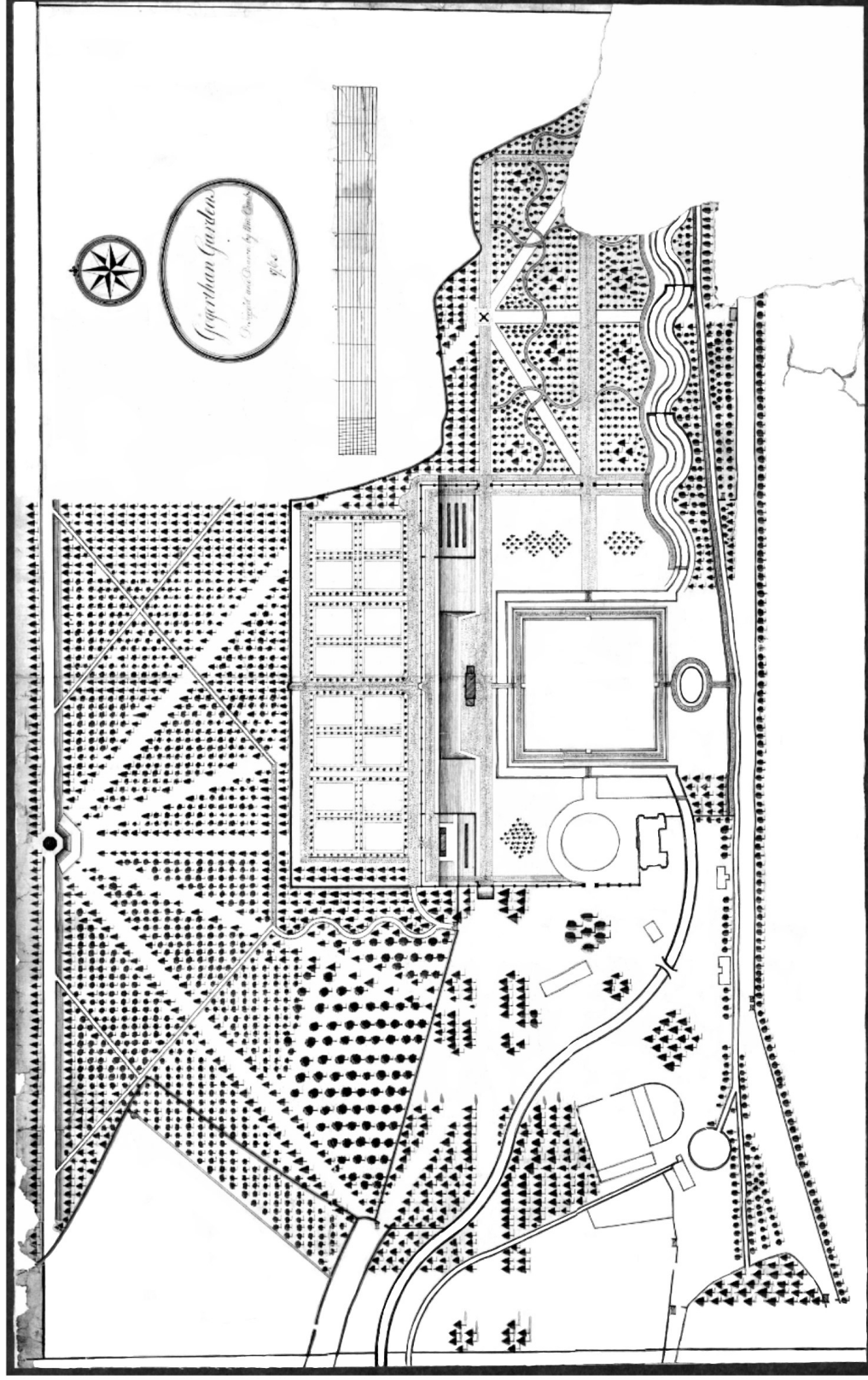


'Pistill Rhaiadr'

O gyfrolau *A Tour in Wales* (1778, 1781) gan Thomas Pennant sy'n croniclo ei daith trwy Gymru rhwng 1773 a 1776.

Taken from Thomas Pennant's *A Tour in Wales* (1778, 1781), which chronicles his journey through Wales between 1773 and 1776.

Am fwy o dudalennau i'w lliwio, ewch i [ColorOurCollections.org](https://www.ColorOurCollections.org)
For more colouring pages, visit [ColorOurCollections.org](https://www.ColorOurCollections.org)



Cynllun o erddi plas Gogerddan, ger Aberystwyth, wedi'i ddylunio gan William Combs yn 1765.

Plan of the gardens at the Gogerddan estate, near Aberystwyth, designed by William Combs in 1765.

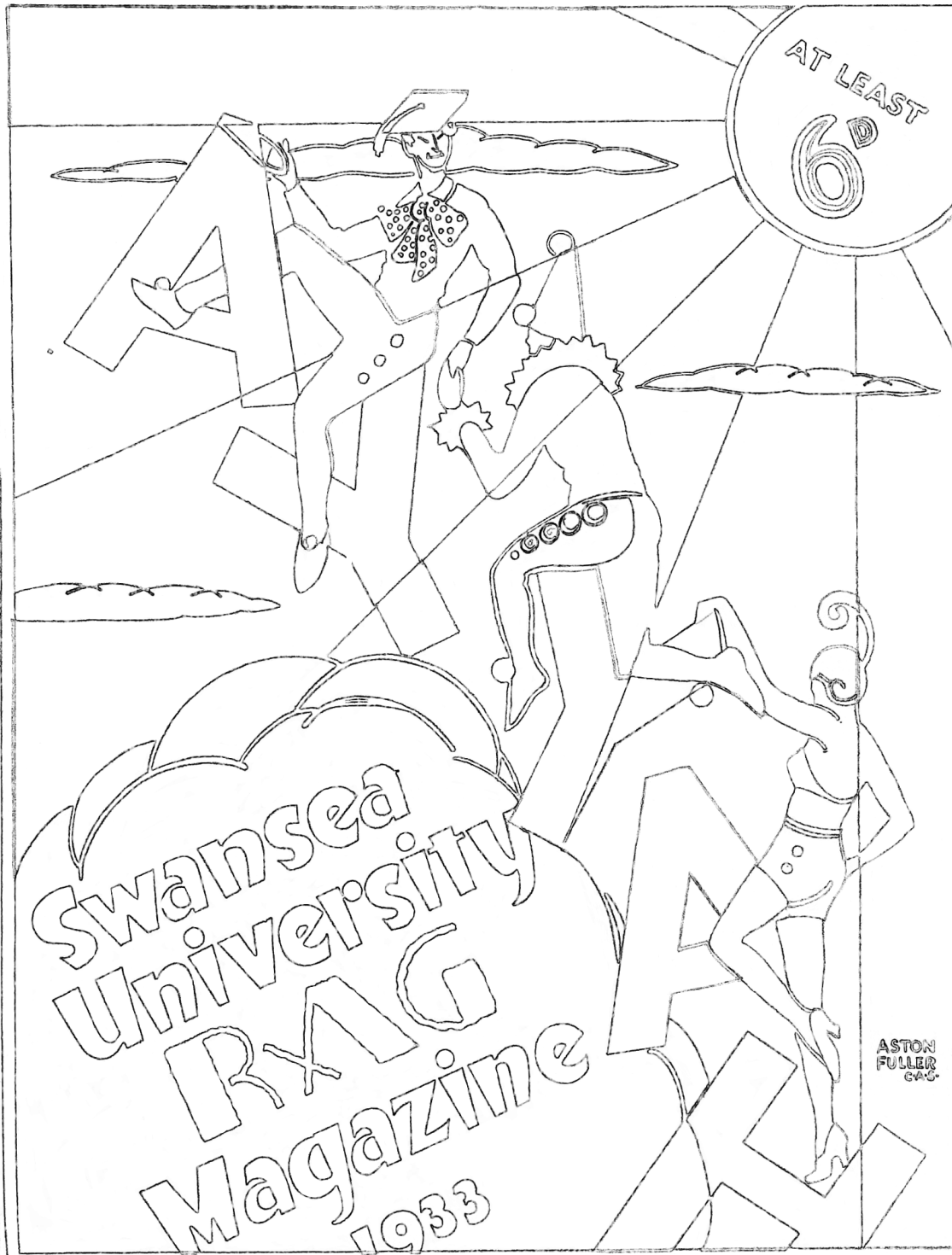
Am fwy o dudalennau i'w lliwio, ewch i [ColorOurCollections.org](#) / For more colouring pages, visit [ColorOurCollections.org](#)

#LliwioEinCasgliadau
#ColorOurCollections

@SwanUniArchives



Swansea University
Prifysgol Abertawe



Tudalen flaen cylchgrawn Rag Prifysgol Abertawe 1933. Mae myfyrwyr a staff wedi bod yn darganfod pethau cyffrous iawn ym Mhrifysgol Abertawe ers ei sefydlu yn 1920.

Cover to the Swansea University Rag Magazine for 1933. Students and staff have been making exciting discoveries at Swansea University since its foundation in 1920.

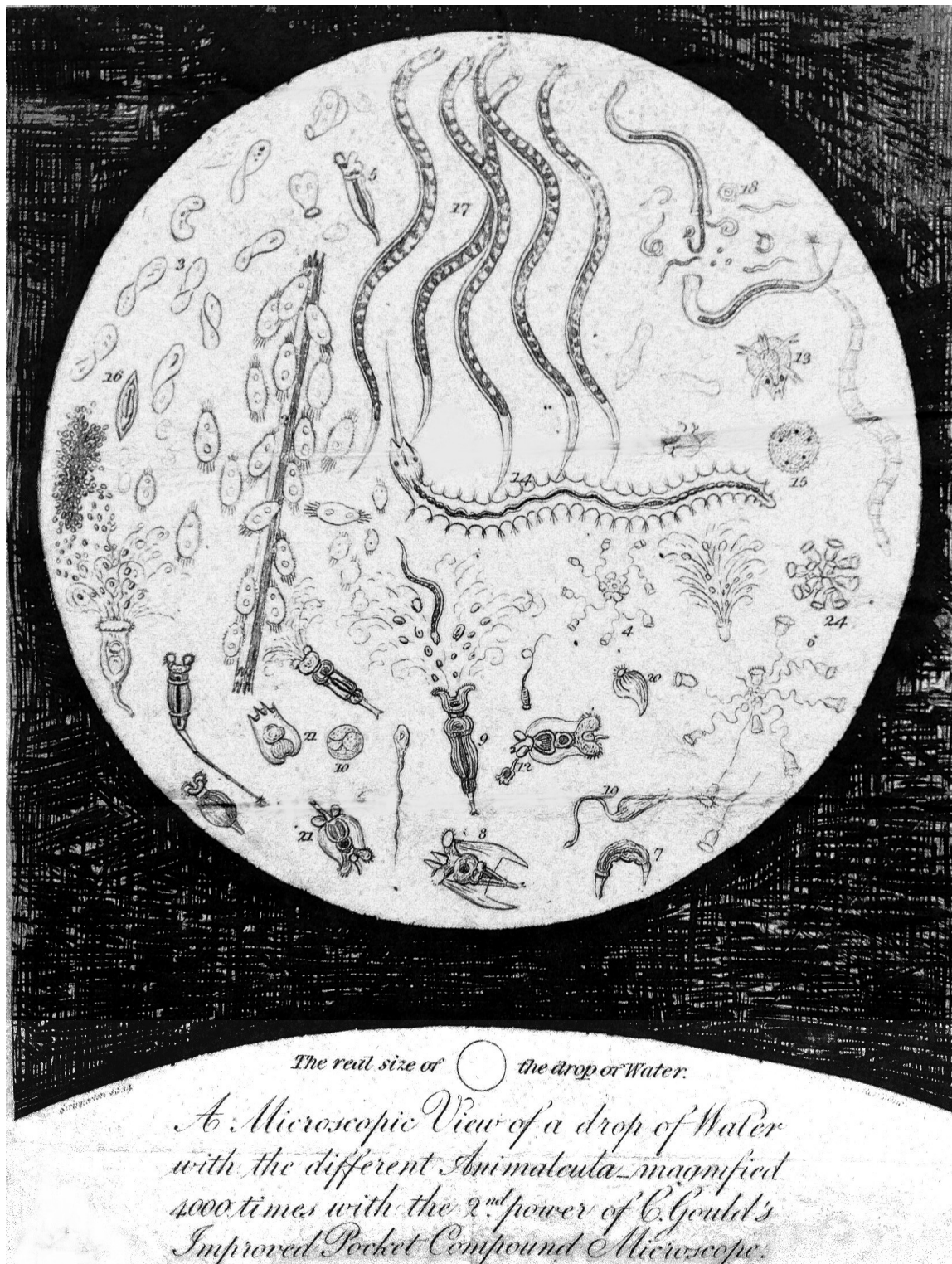
Am fwy o dudalennau i'w lliwio, ewch i [ColorOurCollections.org](https://www.colorourcollections.org)
For more colouring pages, visit [ColorOurCollections.org](https://www.colorourcollections.org)

#LliwioEinCasgliadau
#ColorOurCollections

@SwanUniArchives



Swansea University
Prifysgol Abertawe



Darganfuwyd golygfa gyffrous o fywyd microsgopig neu 'milionos' mewn albwm o sgetsys o Dde Cymru o gasgliad Wishart.

An exciting view of microscopic life, or 'animalcula', discovered within an album of pencil sketches of south Wales from the Wishart collection.

Am fwy o dudalennau i'w lliwio, ewch i ColorOurCollections.org
For more colouring pages, visit ColorOurCollections.org

#LliwioEinCasgliadau
#ColorOurCollections

@uswlibrary

University of
South Wales
Prifysgol
De Cymru



EFFIGY OF RHYS,
PRINCE OF SOUTH WALES.

Jonathan Williams, *A General History of the County of Radnor, illustrated with numerous engravings of county mansions, public men, family arms ...* 1905.

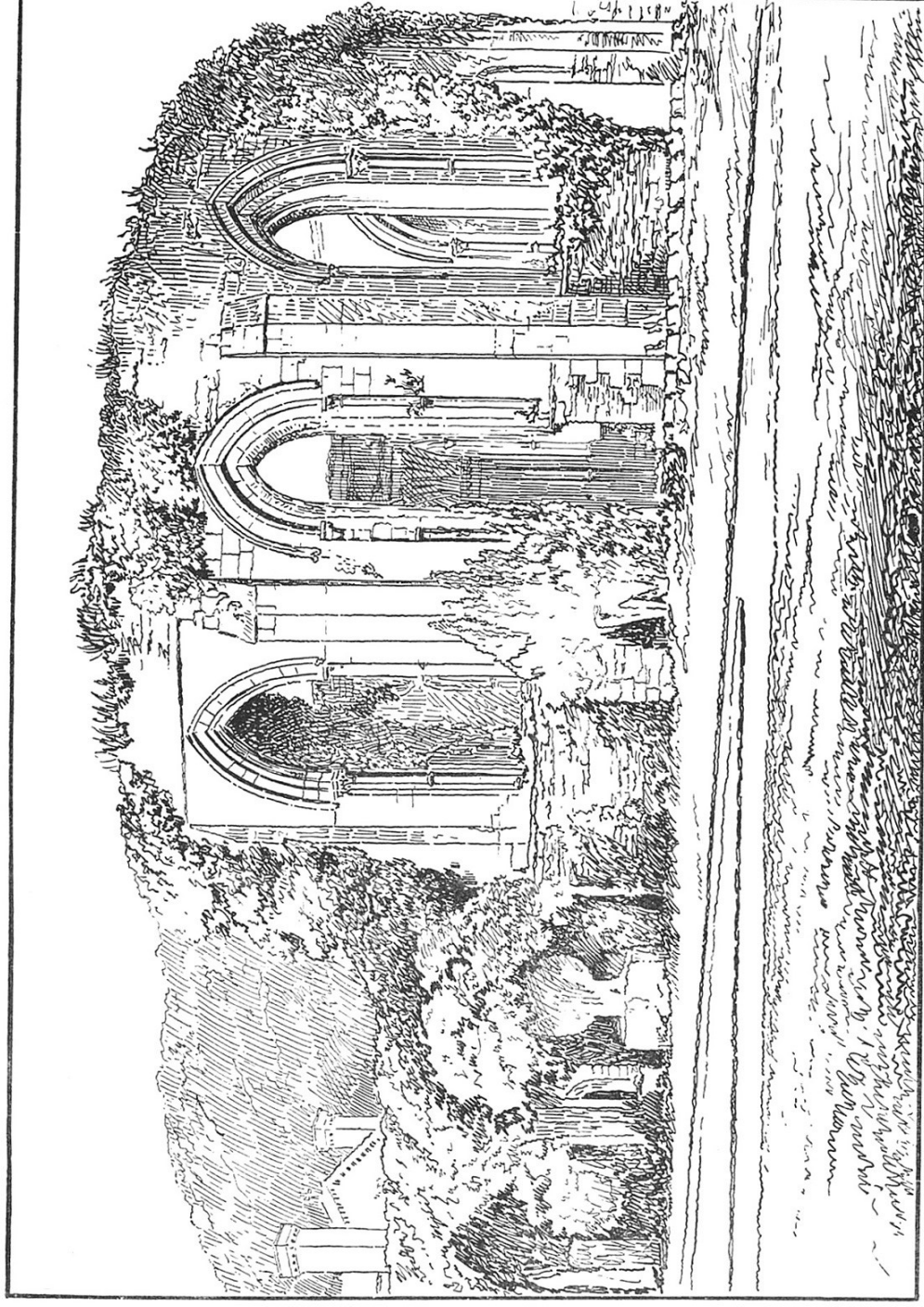
Am fwy o dudalennau i'w lliwio, ewch i [ColorOurCollections.org](https://www.ColorOurCollections.org)
For more colouring pages, visit [ColorOurCollections.org](https://www.ColorOurCollections.org)

@uswlibrary

Daw'r ddelwedd hon o gasgliad / This image is from the collection of

#LiwioEinCasgliadau
#ColorOurCollections

University of
South Wales
Prifysgol
De Cymru



CHAPTER HOUSE, MARGAM ABBEY, SOUTH VIEW.

(From a Drawing by C. Lynam, Esq.)

Walter de Gray Birch, *A History of Margam Abbey*, 1897

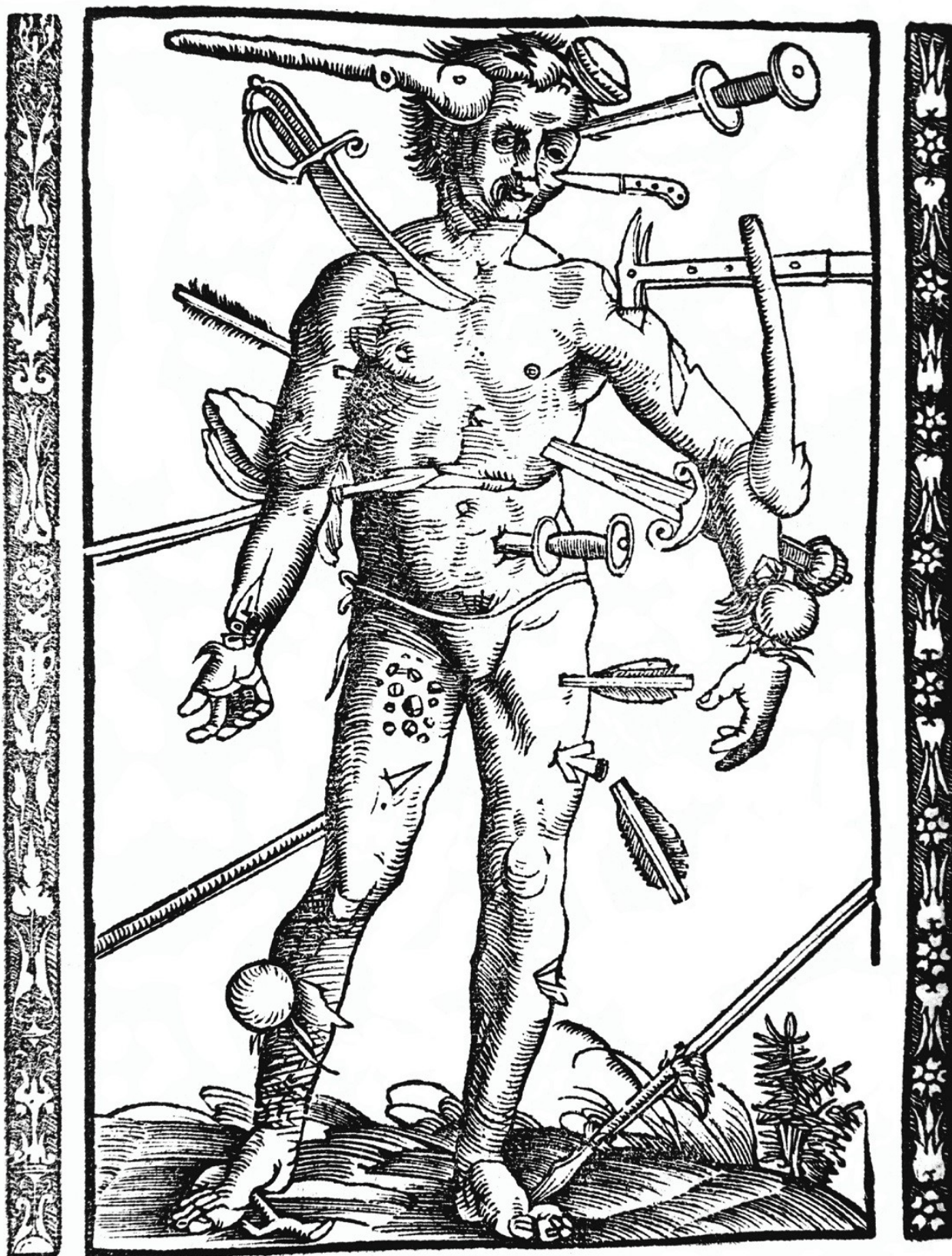
Am fwy o dudalennau i'w lliwio, ewch i ColorOurCollections.org / For more colouring pages, visit ColorOurCollections.org.

#LliwioEinCasgliadau
#ColorOurCollections

@UWTSDLib



Prifysgol Cymru
Y Drindod Dewi Sant
University of Wales
Trinity Saint David



Paracelsus, *Der grossen Wundartzney, das erst [-ander] Bùch, des ergründten und bewerten, der bayden Artaney, Doctors Paracelsi.* Augspurg, 1536-37

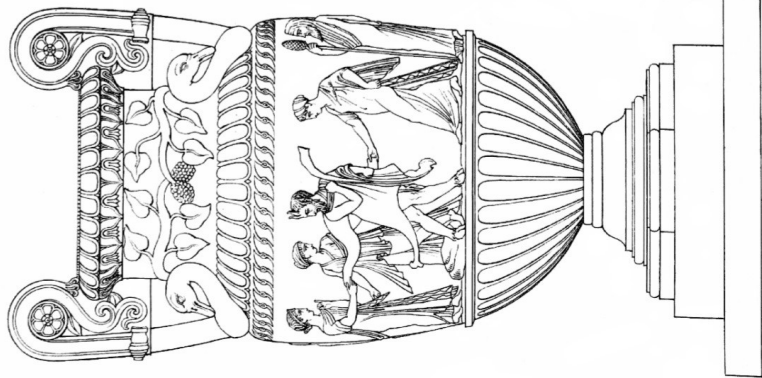
Am fwy o dudalennau i'w lliwio, ewch i [ColorOurCollections.org](https://www.ColorOurCollections.org)
For more colouring pages, visit [ColorOurCollections.org](https://www.ColorOurCollections.org)



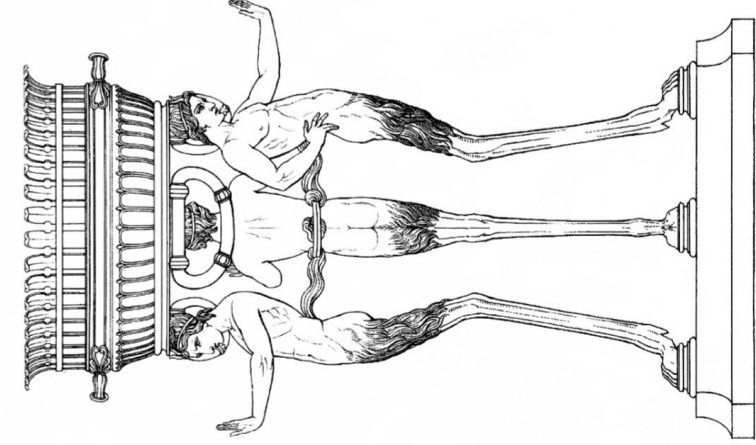
#LliwioEinCasgliadau
#ColorOurCollections

Pl. 76.

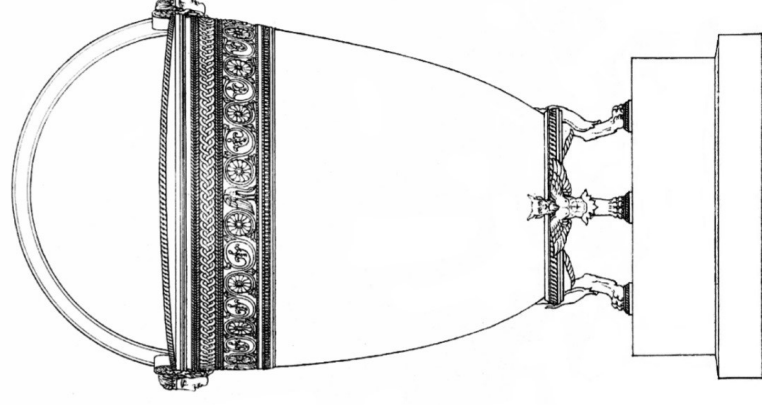
FROM THE MYSEVM AT PORTICI.



ANTIQUÉ MARBLE VASE.



BRONZE TRIPOD OF SATYRS.



BRONZE SITVLA.

Drawn by T. ALFASOŃ, Arch.

Scale 1/100

Scale 1/100

Scale 1/100

Engraved by HENRY MOSES.

FOUND AT POMPEII.

Published, first, in 1818 by John Murray, Albemarle Street, & W. B. Lockhart, York Place, Edinburgh.

J.P. Cockburn, Delineations of the celebrated city of Pompeii. London: ca. 1819

Am fwy o dudalennau i'w lliwio, ewch i ColorOurCollections.org / For more colouring pages, visit ColorOurCollections.org