



COLOR
OUR
COLLECTIONS
2022

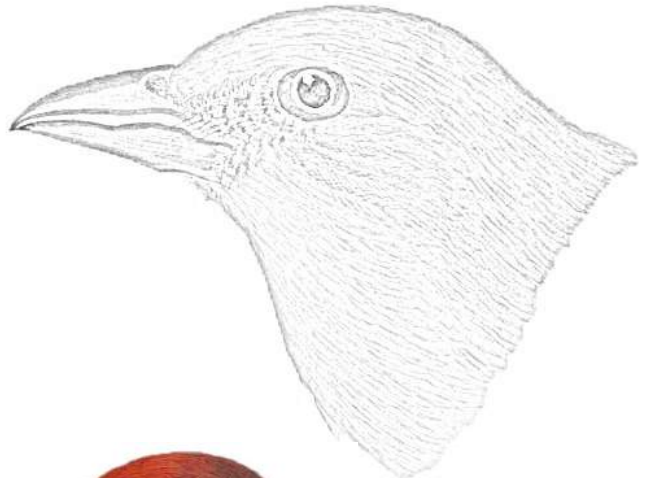
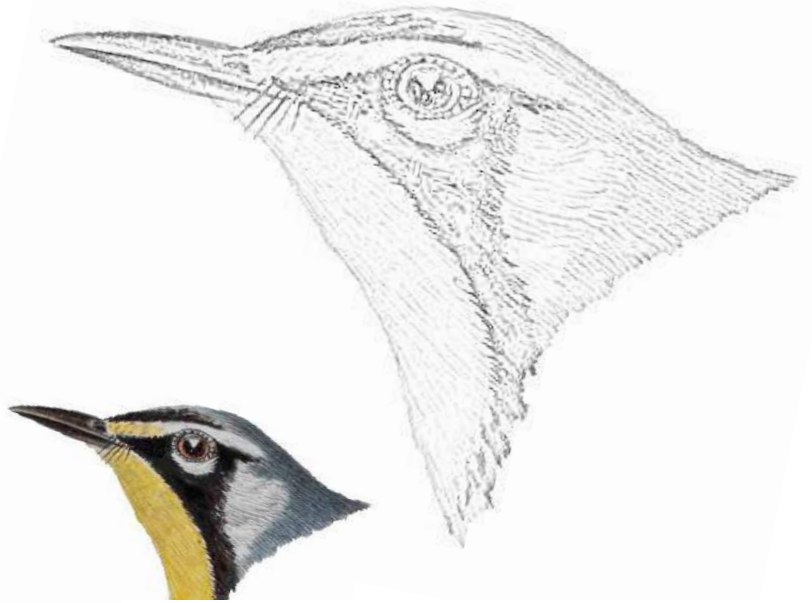
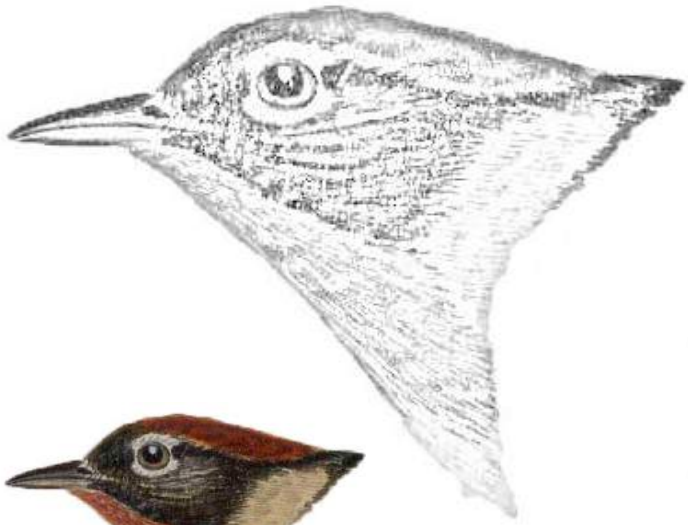


Smithsonian
Libraries and Archives

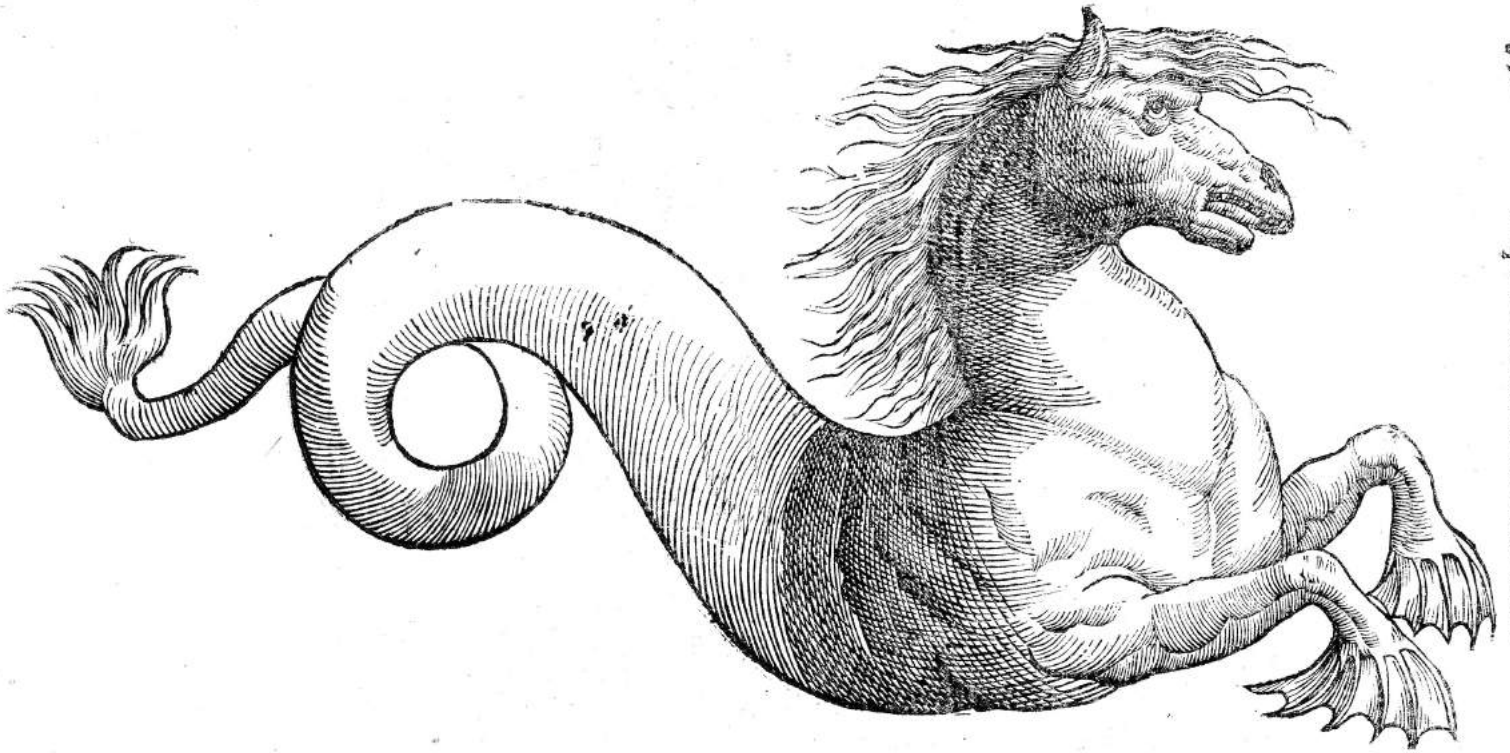


Share your work with us!





Original Images:
Robert Ridgway Bird Head Drawings
#189, #197, #209, #222. Smithsonian
Institution Archives, Record Unit 7167.



356

Equus marinus monstruosus.



Original Image:

Ulisse Aldrovandi

“Equus marinus monstruosus”

Vlyssis Aldrouandi patricii Bononiensis Monstrorum historia

Bononiae : Typis Nicolai Tebaldini, MDCXLII [1642]

<https://s.si.edu/2Mppq73>



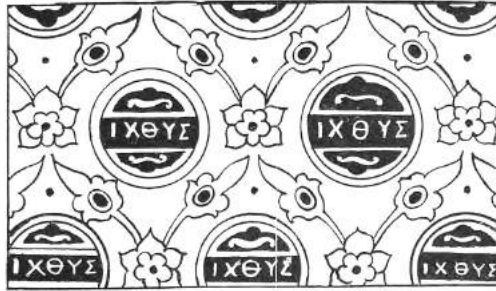
356

Equus marinus monstruosus.

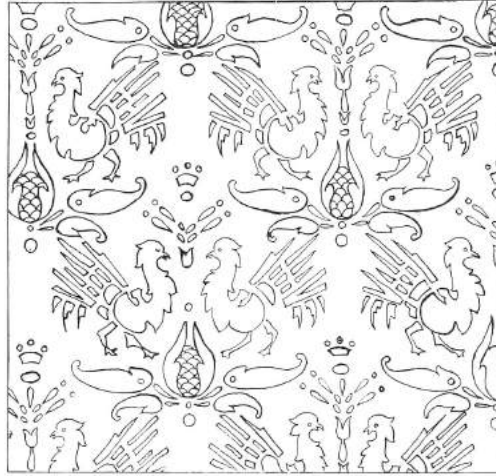


Original Image:

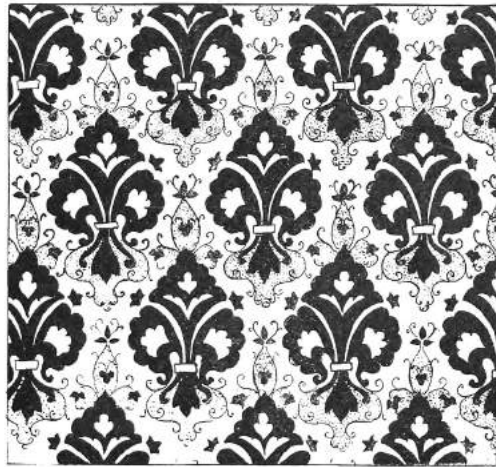
United States National Museum paleontology exhibit in the Natural History Building, featuring a papier-mâché model of a Stegosaurus, c. 1915. Smithsonian Institution Archives, Record Unit 95, Image no. SIA_000095_B44A_F13_006.



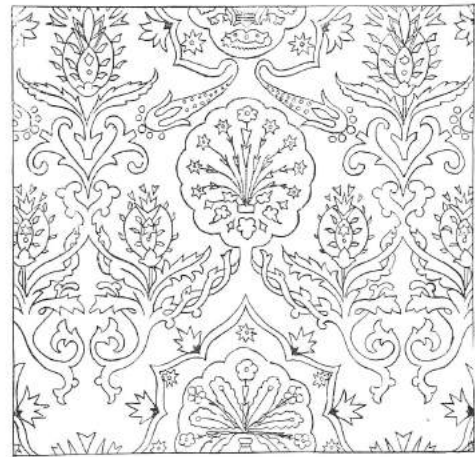
No. 3



No. 4



No. 5



No. 6



Original Image:

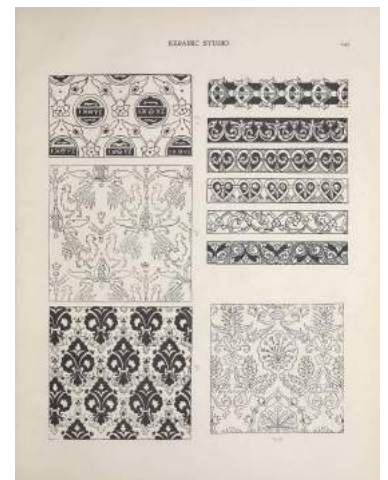
Adelaide Alsop-Robineau

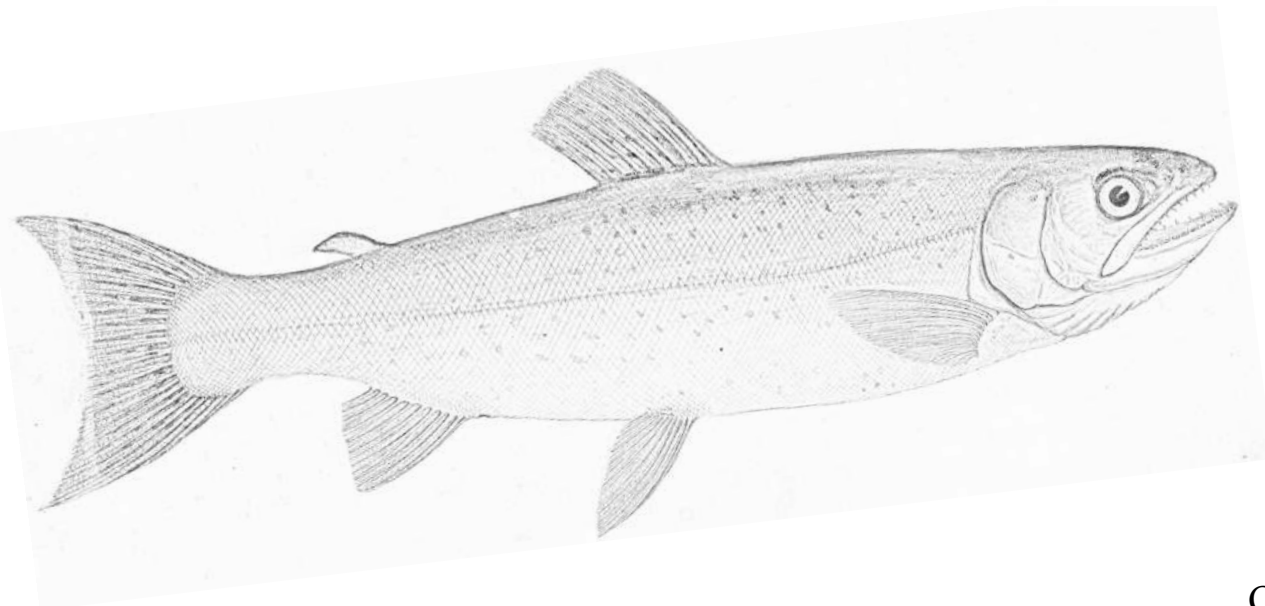
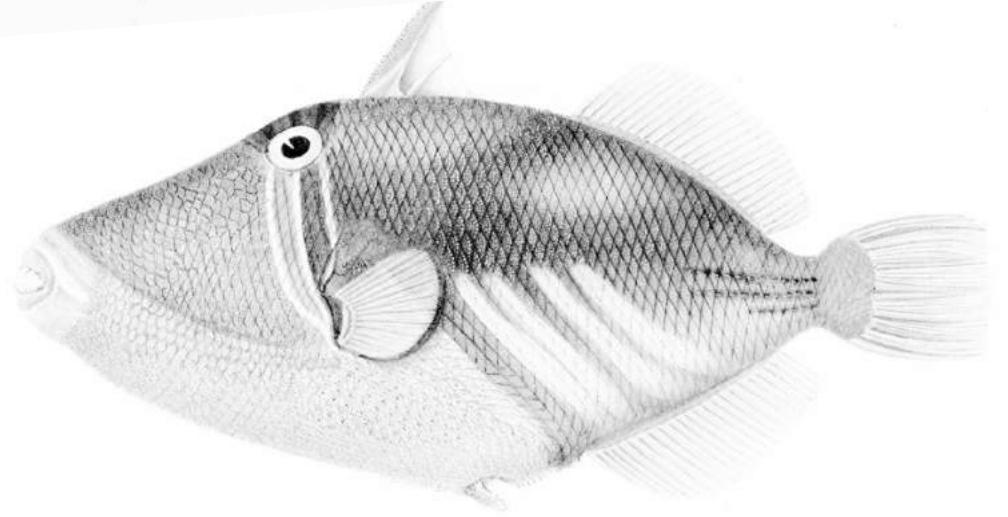
Examples of Historical Ornament

Keramic studio, V.1

Keramic Studio Publishing Co., April, 1900

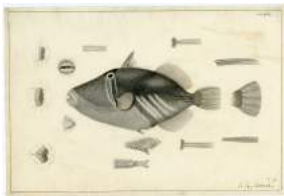
<https://s.si.edu/3fq7M0S>

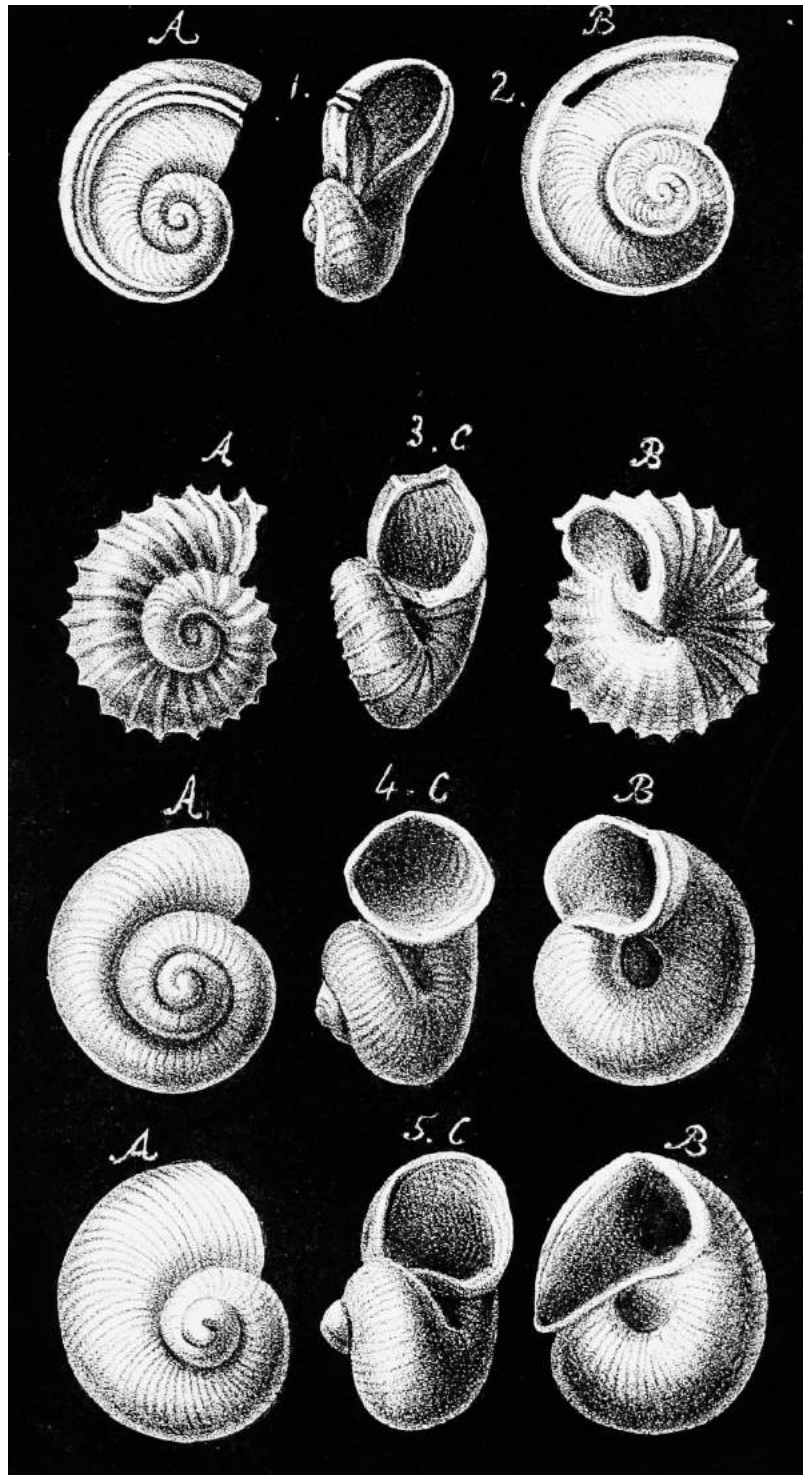




Original Images:

Drawings by Joseph Drayton and John Richard, 1838–41. Smithsonian Institution Archives, Record Unit 7186, Image no. SIA2011-1233, SIA2011-1232, and SIA2016-008656.





Original Image:

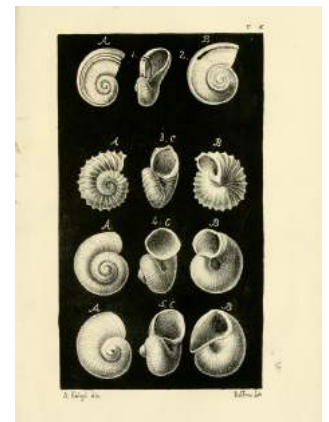
Oronzio Gabriele Costa

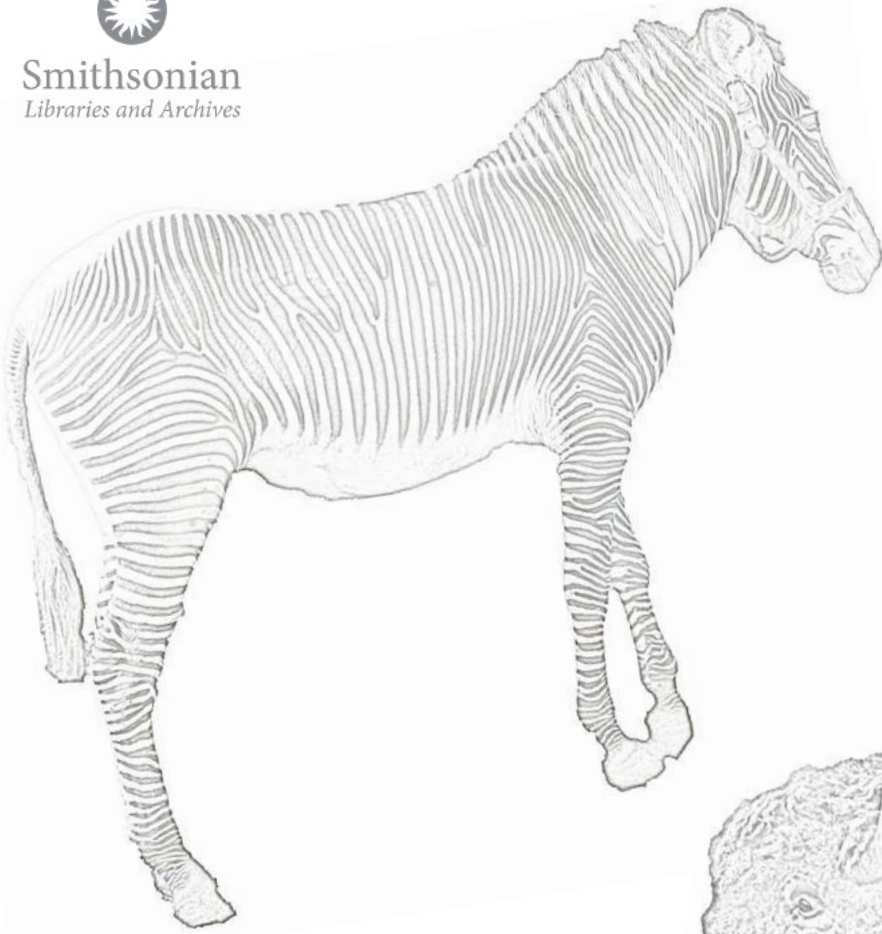
T. X

Microdoride mediterranea

Napoli, dalla Stamperia dell'iride, 1861.

<https://s.si.edu/3KSxcFa>





Original Images:

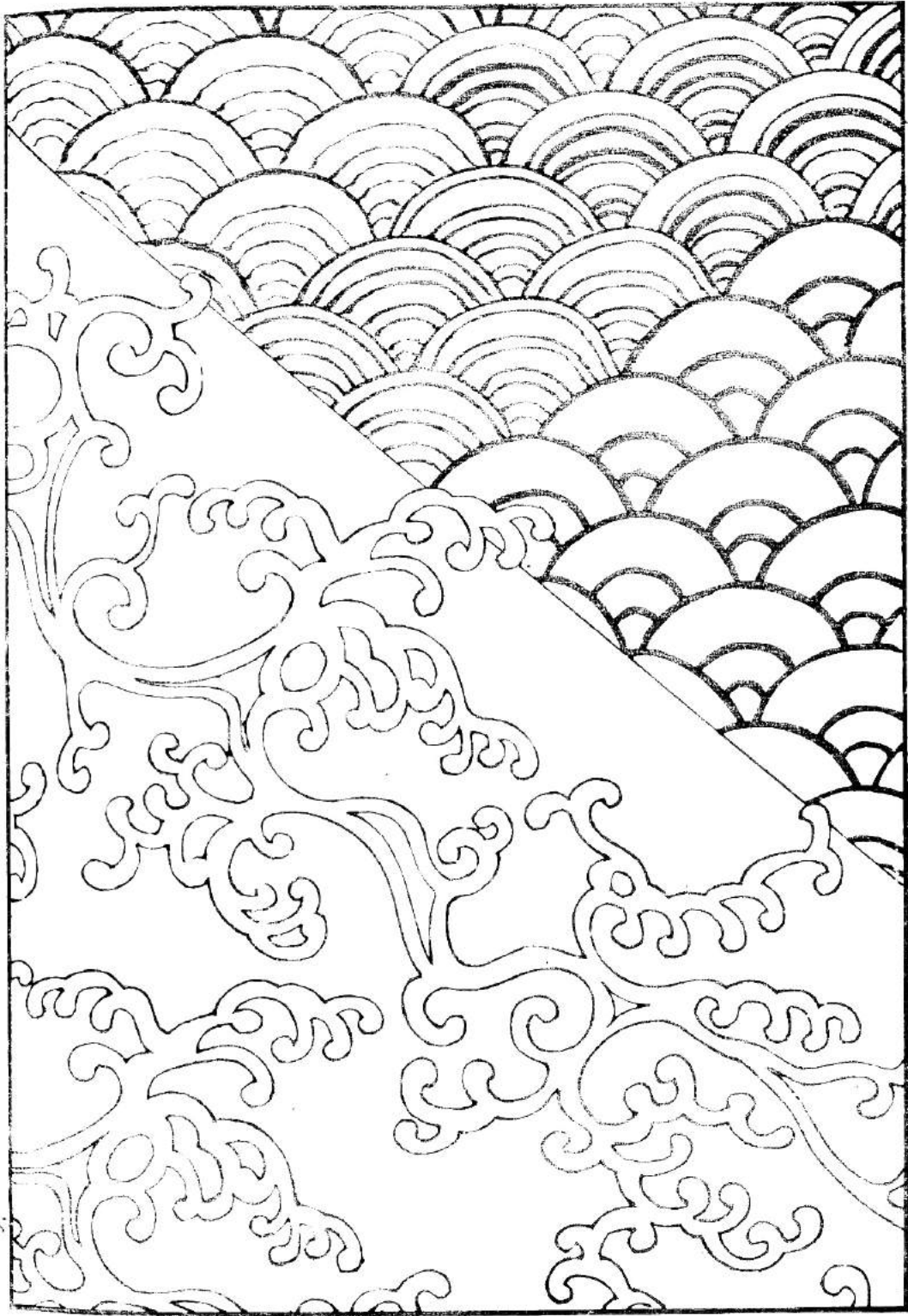
An American bison, tiger cub, and zebra at the Smithsonian's National Zoological Park, c. 1890–1900.

Smithsonian Institution Archives, Record Unit 95,

Image no. SIA_000095_B46_F13_010,

SIA_000095_B49_F14_015, and

SIA_000095_B49_F22_019.



Original Image:

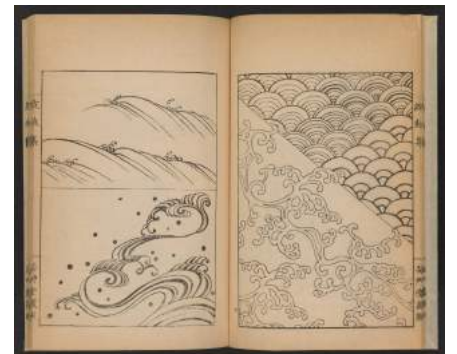
Mori Yūzan (森雄山)

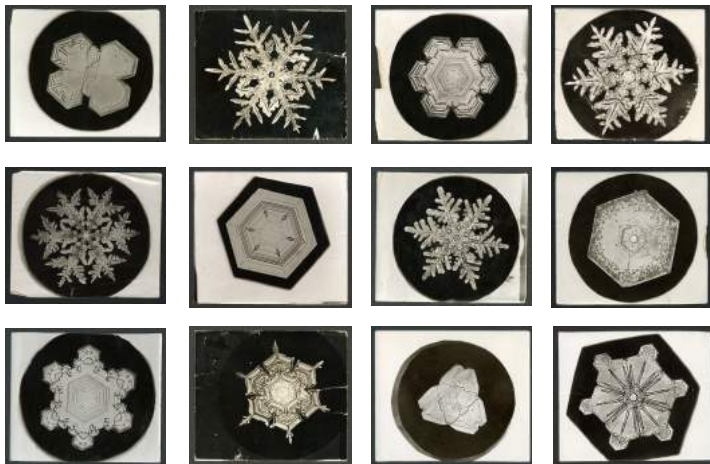
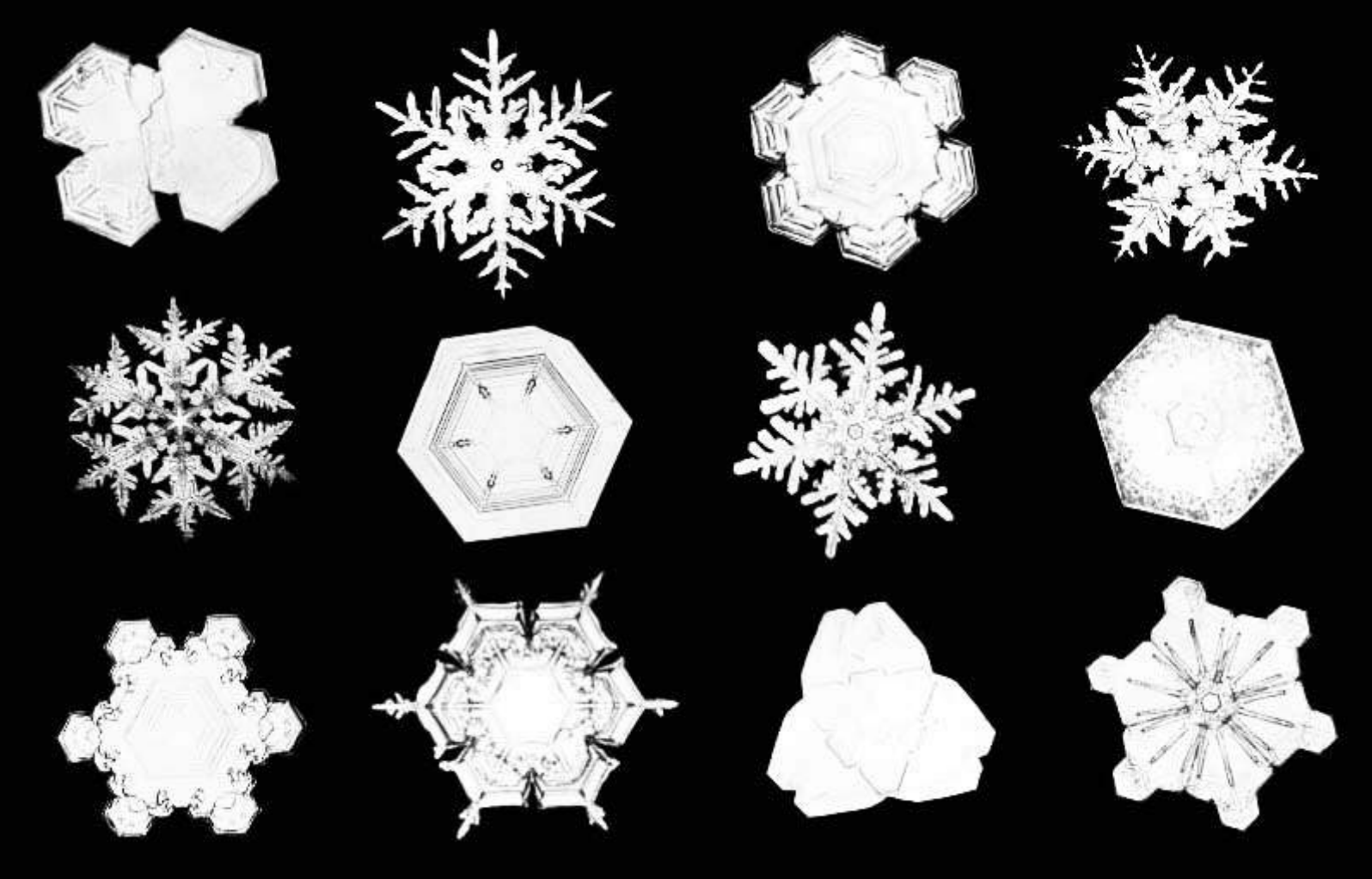
Wave patterns

Hamonshū (波紋集), V.1

Kyōto-shi, Meiji 36 [1903]

<https://s.si.edu/3IK9ucE>





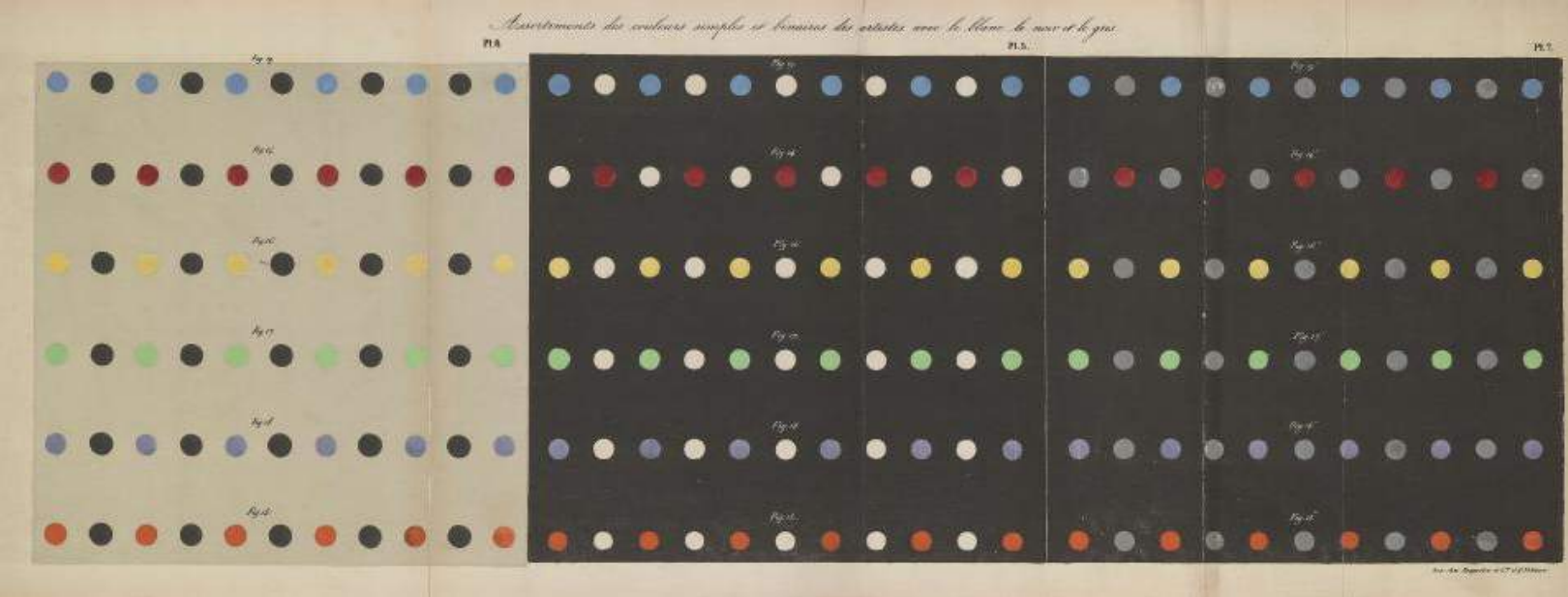
Original Images:

Wilson Bentley photomicrographs of snowflakes nos. 1225, 332, 1206, 990, 920, 234, 1152, 951, 1205, 579A, 482, 976, c. 1890. Smithsonian Institution Archives, Record Unit 31.



Original Image:
Fashion plate illustration
Journal des Demoiselles
Collected in [Fashion plates] scrapbook, v. 4
<https://s.si.edu/3u3FqVd>





Share your work with us!

Smithsonian Libraries and Archives



@SILibraries



@SmithsonianLibraries

Smithsonian Institution Archives



@SmithsonianArchives



@SmithsonianArch



@SmithsonianInstitutionArchives

Front Cover Image:

Michel Eugène Chevreul Des couleurs et de leurs applications aux arts industriels à l'aide des cercles chromatiques: Paris : J.B. Ballière et fils, libraires de l'Académie impériale de médecine, 1864.

Back Cover Image:

Michel Eugène Chevreul De la loi du contraste simultané des couleurs[On the law of simultaneous contrast of colors]Paris: chez Pitois-Levrault et cie., 1839