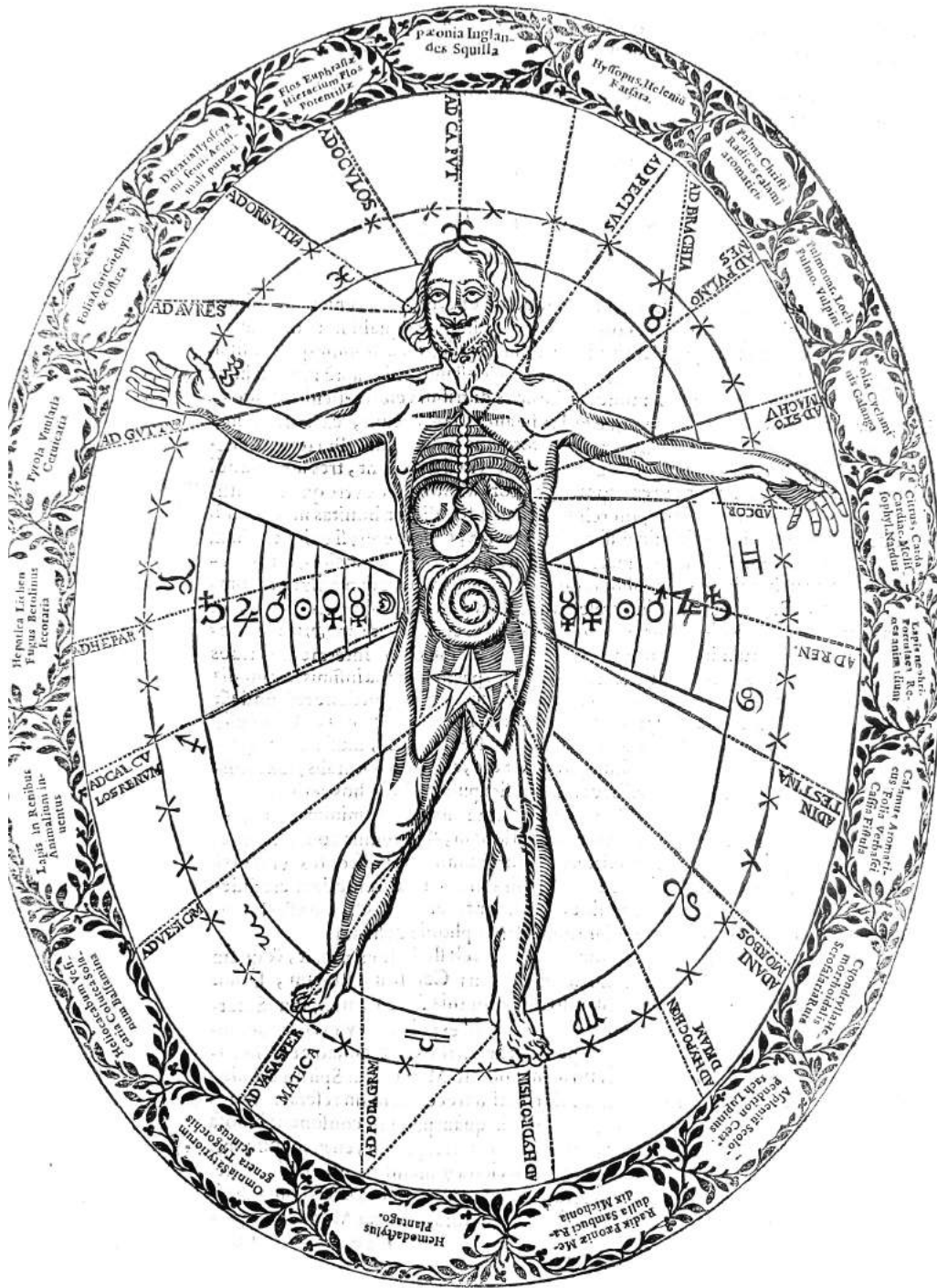
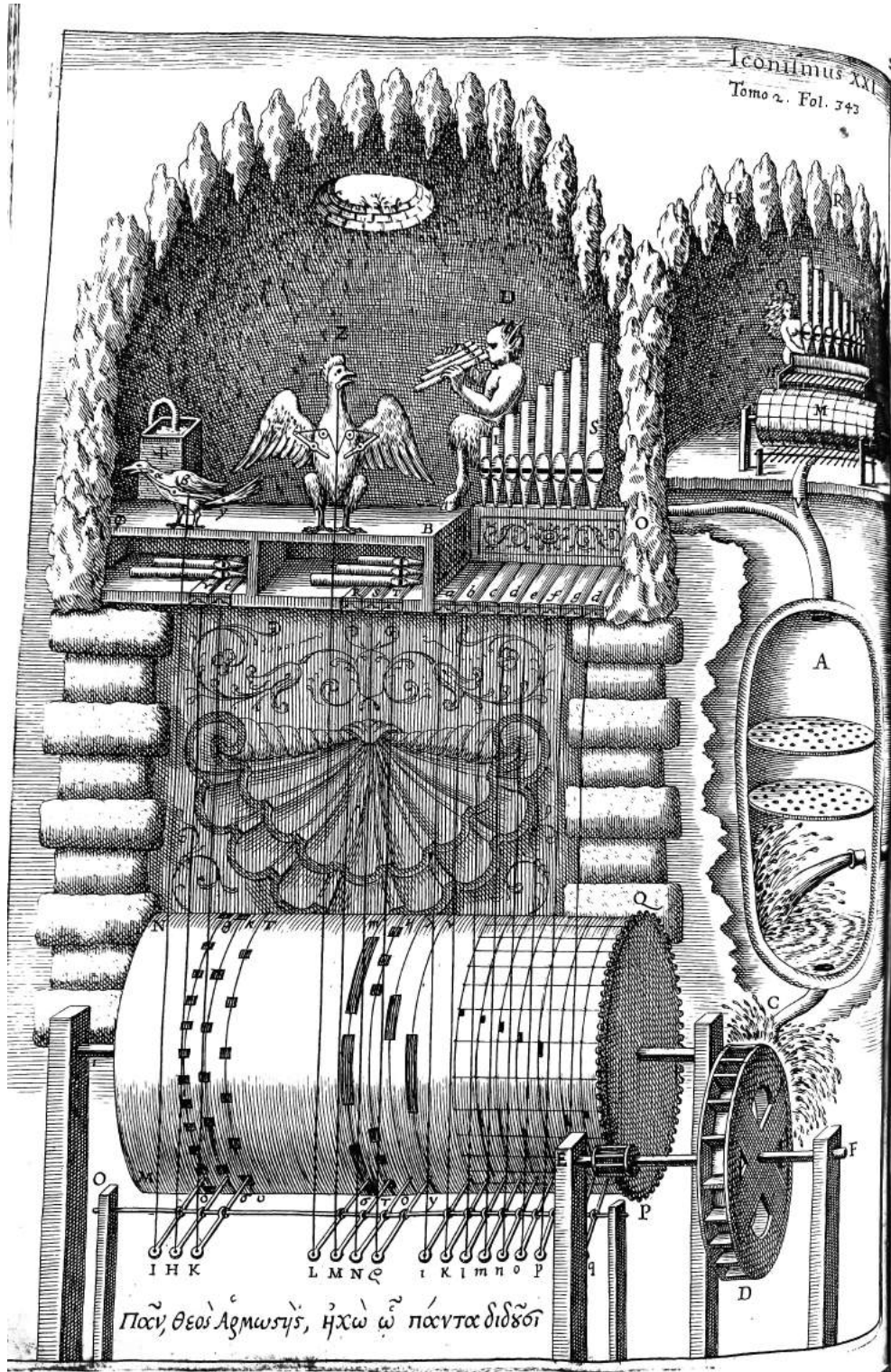




402 *Artis Magnae Consoni & Dissoni*
Typus Sympathicus Microcosmi cum Migacosmo.



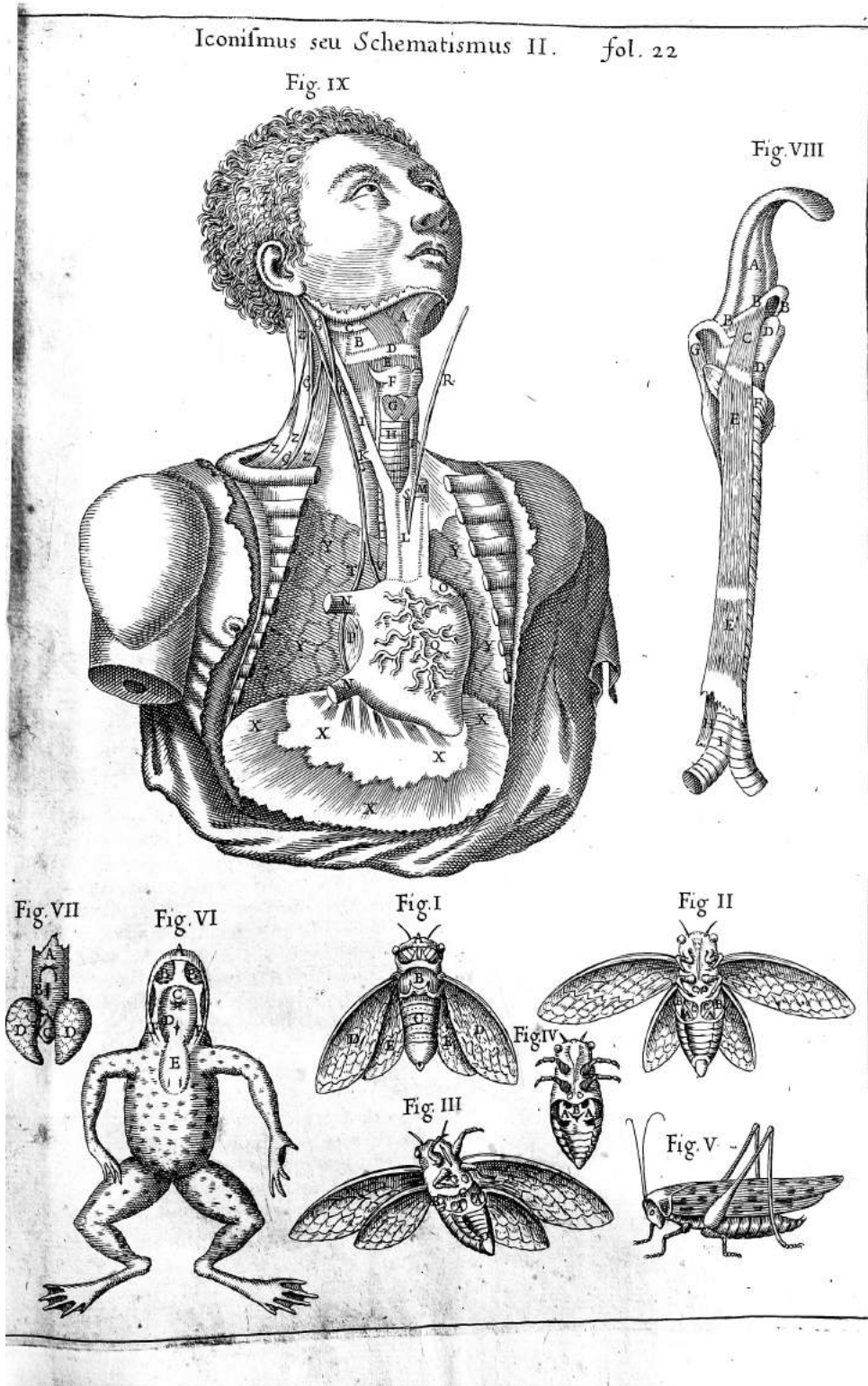
Kircher, Athanasius, Fra Corbelletti, Ludovico Grignani, and Jacobus Viva. *Athanasii Kircheri Fuldensis e Soc. Iesu Presbyteri Mvsurgja Vniversalis, Sive, Ars Magna Consoni et Dissoni*. Print. Romæ: ex typographia hæredum Francisci Cor, 1650. Lane Medical Library, A155H .K58 1650, Special Collections.



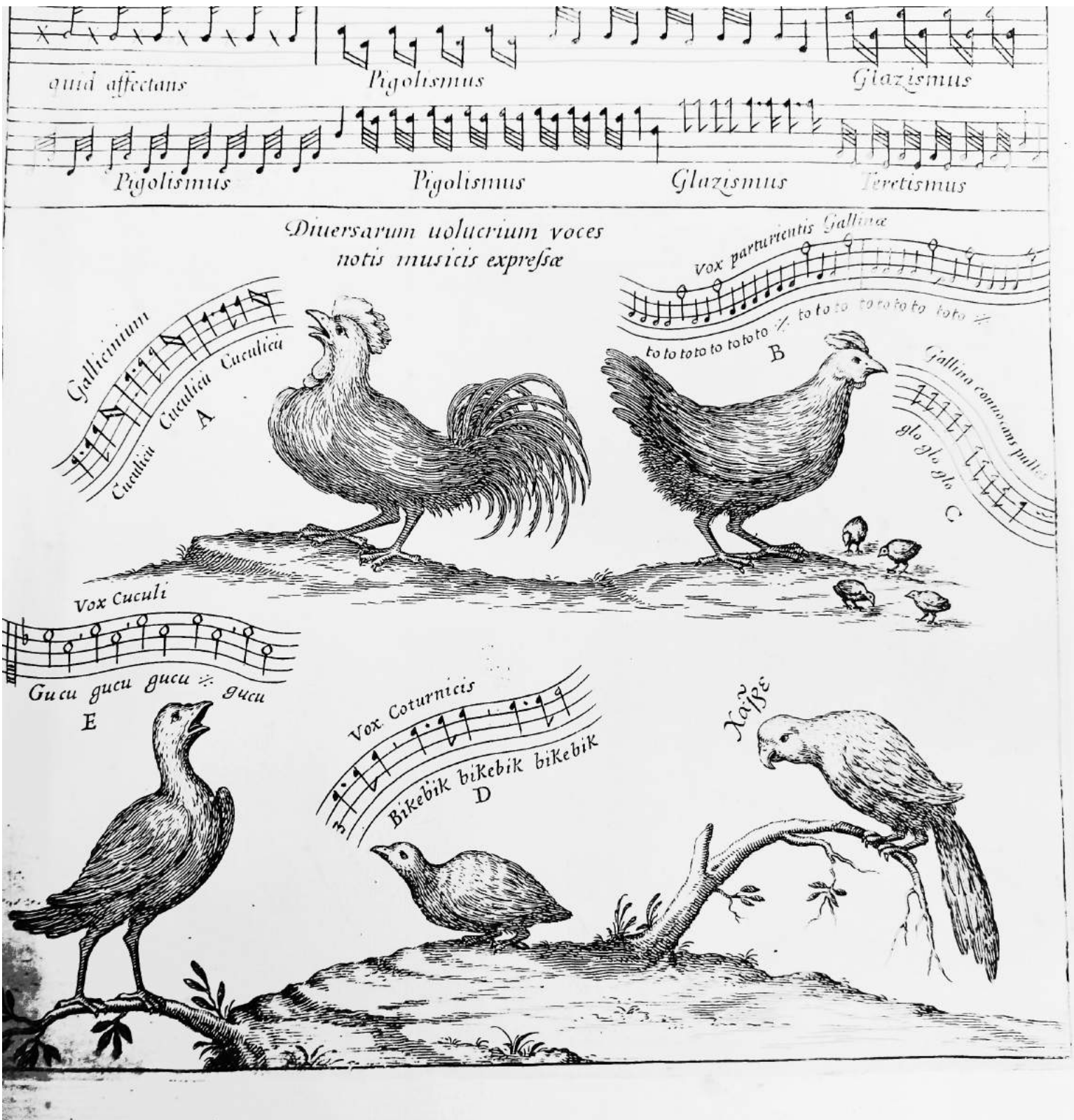
Kircher, Athanasius, Fra Corbelletti, Ludovico Grignani, and Jacobus Viva. *Athanasii Kircheri Fuldensis e Soc. Iesu Presbyteri Mvsurgja Vniversalis, Sive, Ars Magna Consoni et Dissoni*. Print. Romæ: ex typographia hæredum Francisci Cor, 1650. Lane Medical Library, A155H .K58 1650, Special Collections.



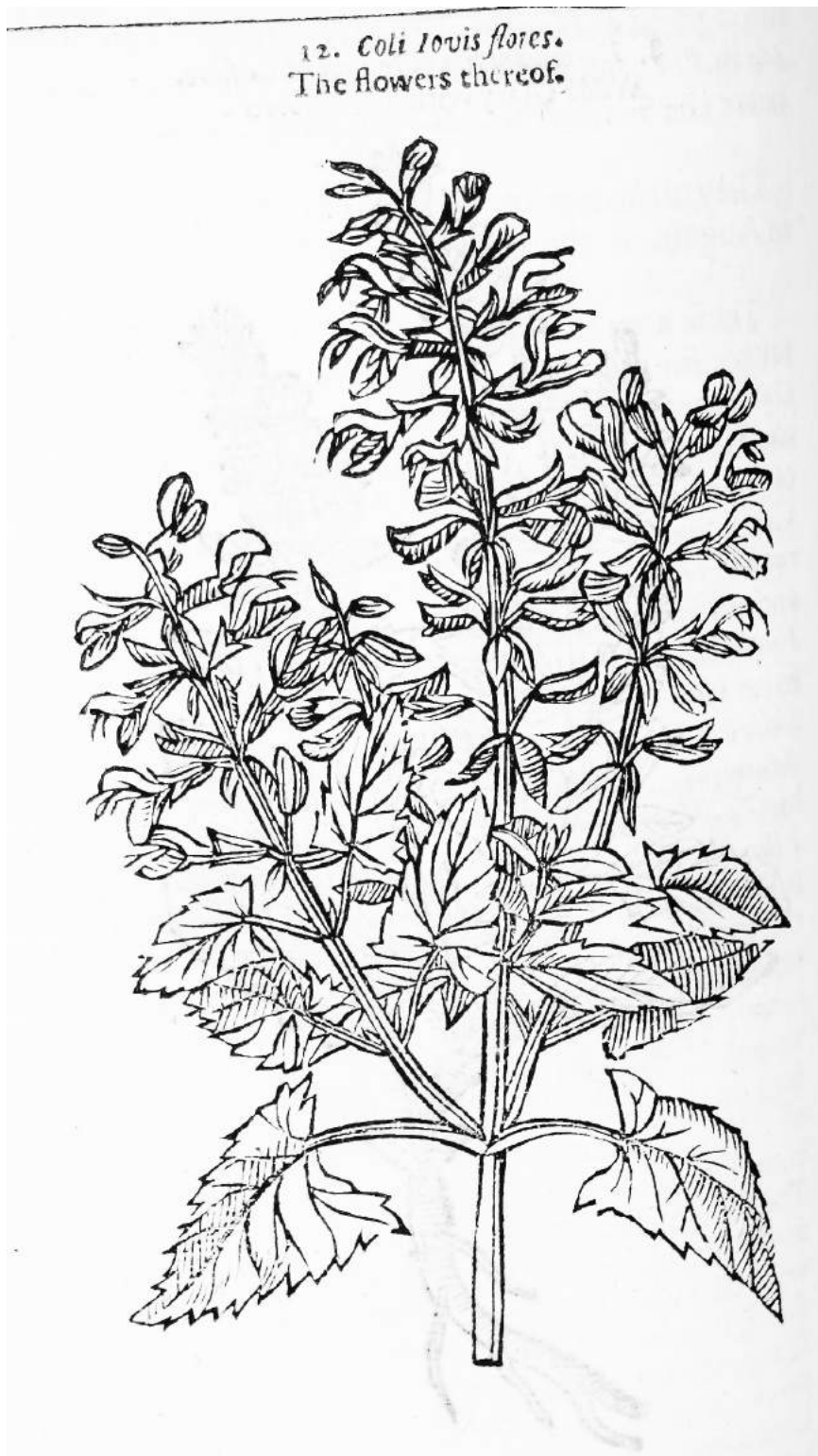
Kircher, Athanasius, Fra Corbelletti, Ludovico Grignani, and Jacobus Viva. *Athanasii Kircheri Fuldensis e Soc. Iesu Presbyteri Mvsurgia Vniversalis, Sive, Ars Magna Consoni et Dissoni*. Print. Romæ: ex typographia hæredum Francisci Cor, 1650. Lane Medical Library, A155H .K58 1650, Special Collections.



Kircher, Athanasius, Fra Corbelletti, Ludovico Grignani, and Jacobus Viva. *Athanasii Kircheri Fuldensis e Soc. Iesu Presbyteri Mvsurgja Vniversalis, Sive, Ars Magna Consoni et Dissoni*. Print. Romæ: ex typographia hæredum Francisci Cor, 1650. Lane Medical Library, A155H .K58 1650, Special Collections.



Kircher, Athanasius, Fra Corbelletti, Ludovico Grignani, and Jacobus Viva. *Athanasii Kircheri Fuldensis e Soc. Iesu Presbyteri Mvsurgia Vniuersalis, Sive, Ars Magna Consoni et Dissoni*. Print. Romæ: ex typographia hæredum Francisci Cor, 1650. Lane Medical Library, A155H .K58 1650, Special Collections.



Parkinson, John, Thomas Bonham, Thomas Cotes, Matthias de L'Obel, and William Marshall. *Theatrum Botanicum: The Theater of Plants, or, An Herball of a Large Extent*. [Print/digital] =. London: Printed by Tho. Cotes, 1640. Lane Medical Library. B1041H .P24 1640, Special Collections.



1. *After Atticus luteus verus.* The true After Attick, or yellow Starwort.



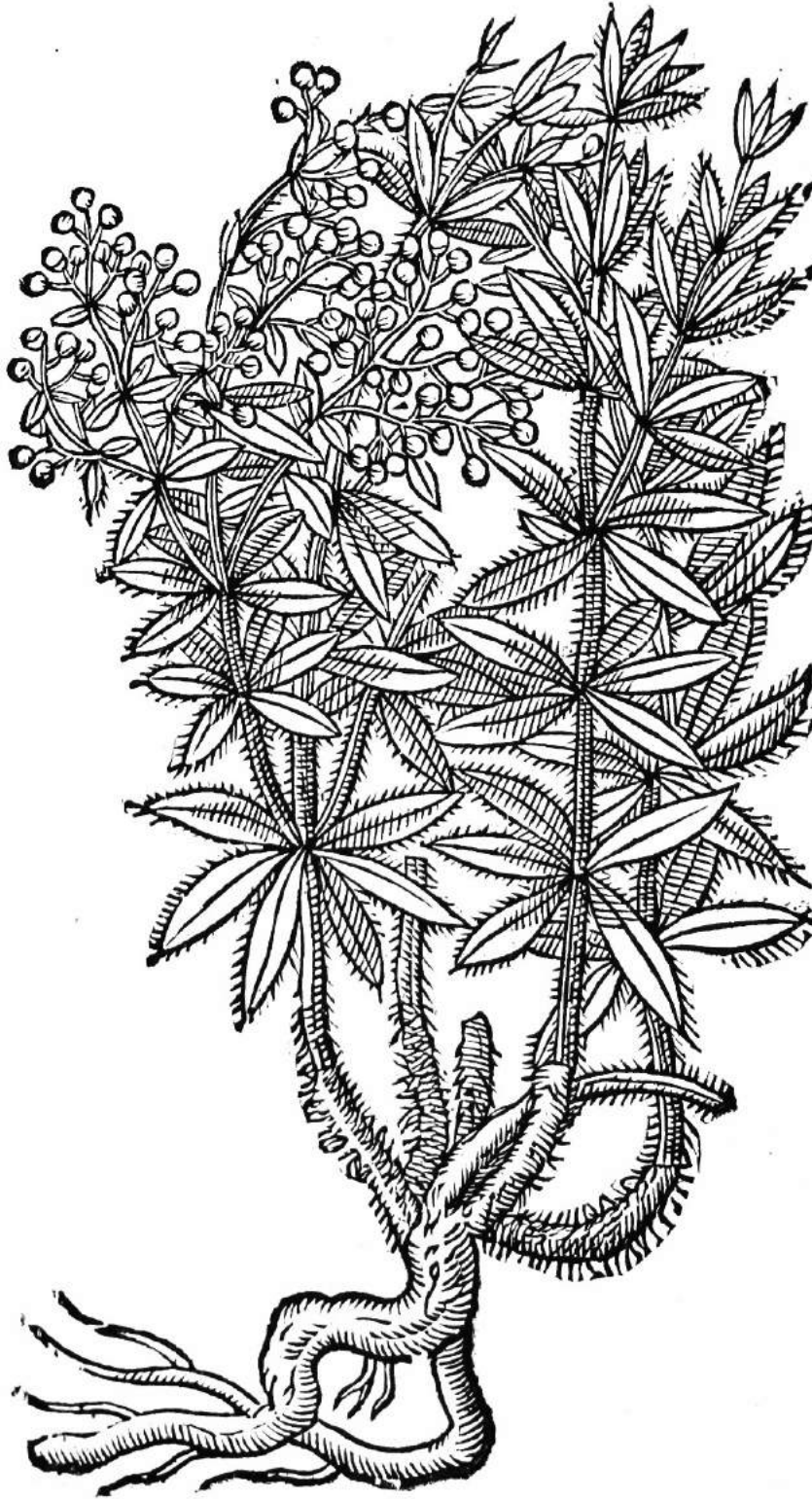
Parkinson, John, Thomas Bonham, Thomas Cotes, Matthias de L'Obel, and William Marshall. *Theatrum Botanicum: The Theater of Plants, or, An Herball of a Large Extent.* [Print/digital] =. London: Printed by Tho. Cotes, 1640. Lane Medical Library. B1041H .P24 1640, Special Collections.



Parkinson, John, Thomas Bonham, Thomas Cotes, Matthias de L'Obel, and William Marshall. *Theatrum Botanicum: The Theater of Plants, or, An Herball of a Large Extent*. [Print/digital] =. London: Printed by Tho. Cotes, 1640. Lane Medical Library. B1041H .P24 1640, Special Collections.



1. *Rubia major fativa*. Garden Madder.



Parkinson, John, Thomas Bonham, Thomas Cotes, Matthias de L'Obel, and William Marshall. *Theatrum Botanicum: The Theater of Plants, or, An Herball of a Large Extent*. [Print/digital] =. London: Printed by Tho. Cotes, 1640. Lane Medical Library. B1041H .P24 1640, Special Collections.



1. *Pentaphyllum majus luteo flore vel albo.*
Great white or yellow Cinkefoile.



2. *Pentaphyllum majus a'terum album.*
Common great white Cinkefoile.



Parkinson, John, Thomas Bonham, Thomas Cotes, Matthias de L'Obel, and William Marshall. *Theatrum Botanicum: The Theater of Plants, or, An Herball of a Large Extent.* [Print/digital] =. London: Printed by Tho. Cotes, 1640. Lane Medical Library. B1041H .P24 1640, Special Collections.