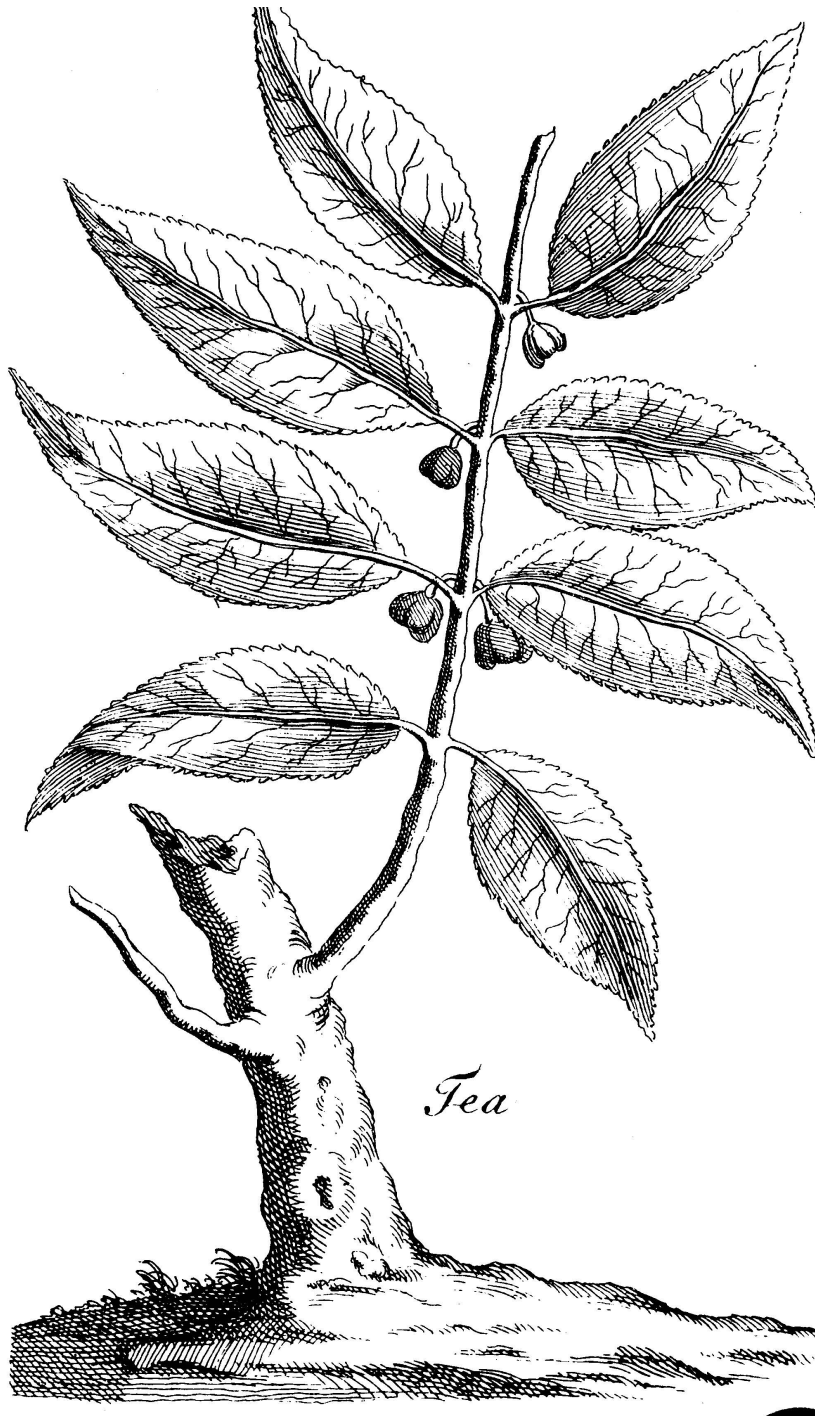




#ColorOurCollections

2023 Edition



UNIVERSITY of
SOUTH FLORIDA
Libraries

USF Libraries - Tampa Special Collections
lib.usf.edu/special-collections/tampa/

Porcelia saffordiana, a South American Tree in the Custard Apple Family (Annonaceae)

Florida Environment & Natural History Collections

MULFORD EXPLORATION OF THE AMAZON VALLEY

243

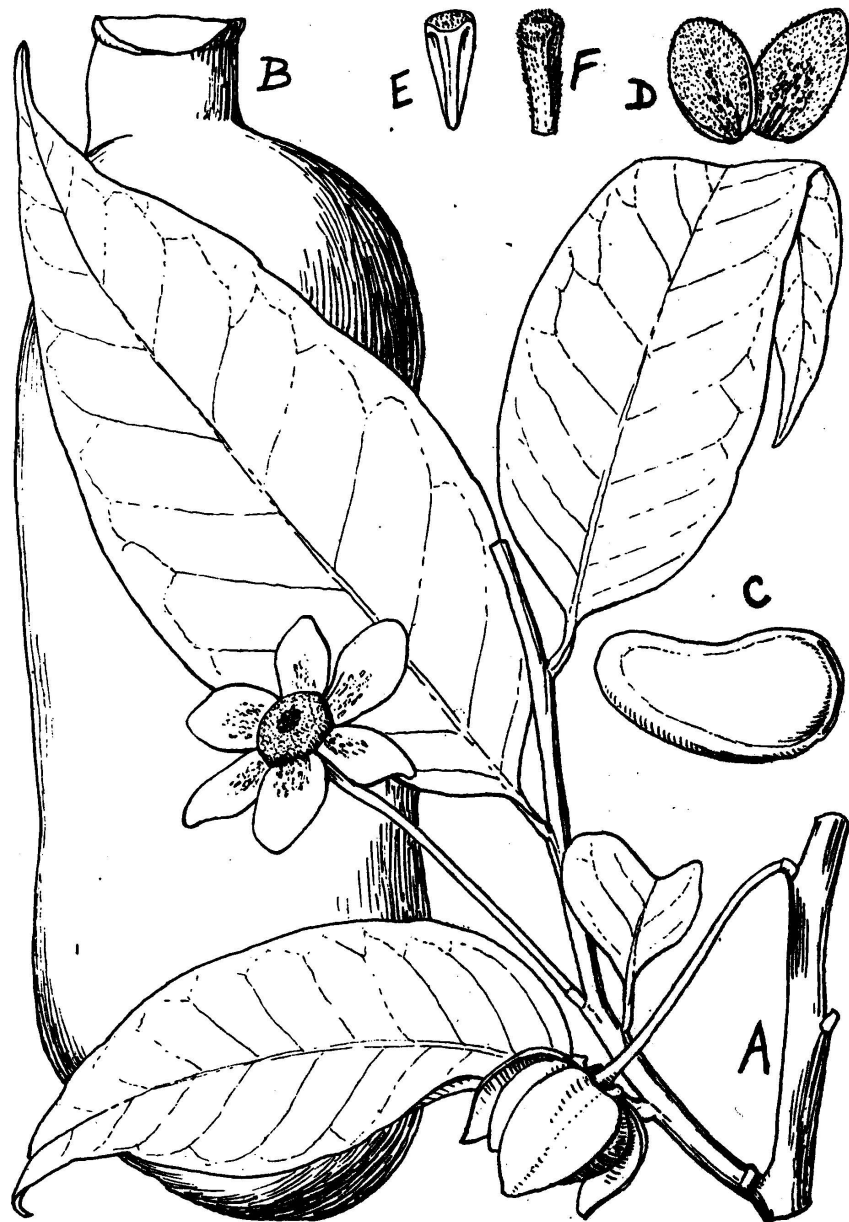


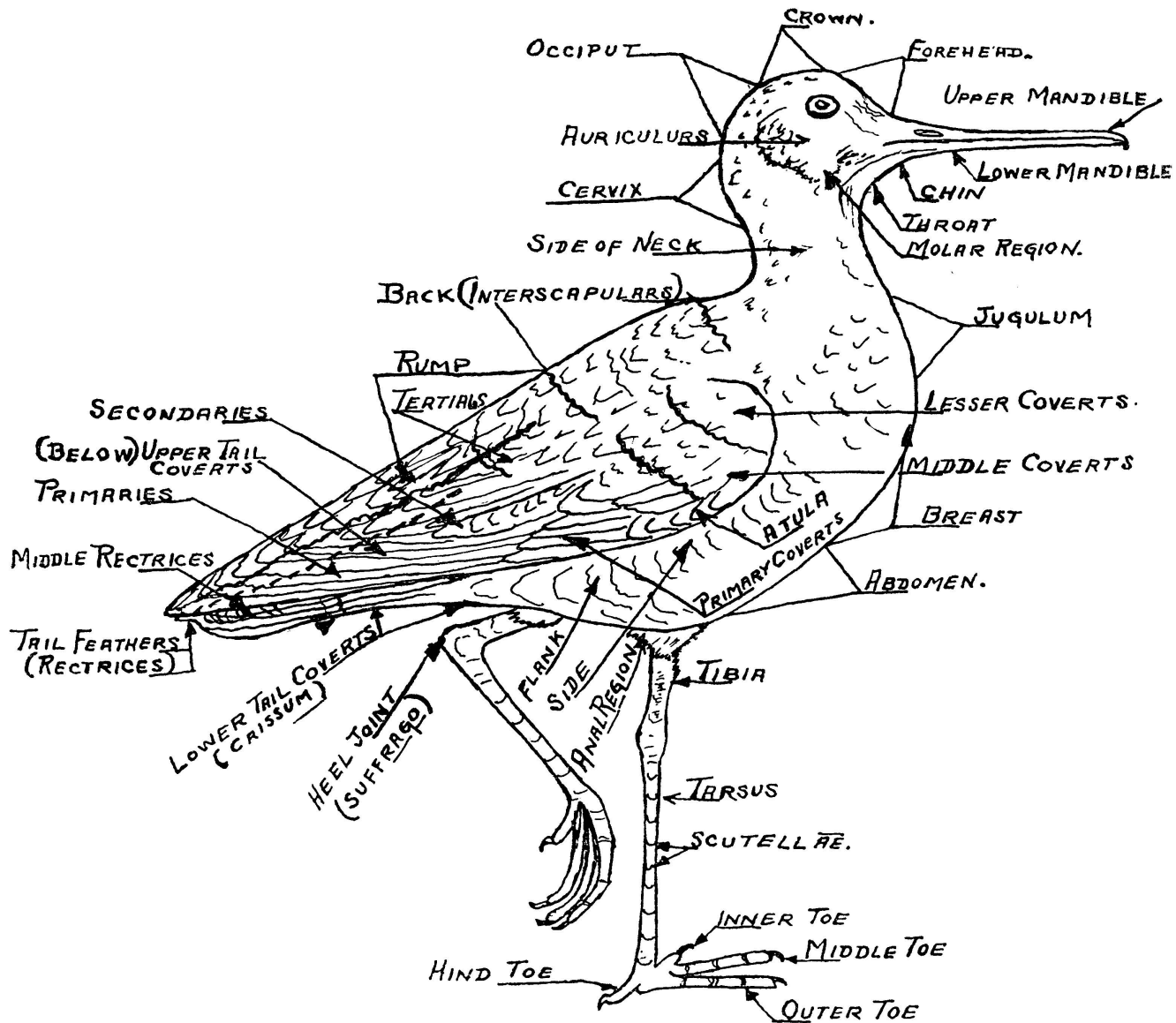
FIGURE 2. *Porcelia Saffordiana* Rusby. A, flowering branchlet; B, immature fruit; C, seed; D, inner (at left) and outer petal, inner faces; E, stamen, $\times 5$; F, pistil, $\times 5$.

Citation: Rusby, Henry Hurd. *Descriptions of New Genera and Species of Plants Collected on the Mulford Biological Exploration of the Amazon Valley, 1921-1922*. Bronx, N.Y: New York Botanical Garden], 1927. Print.



Topography of a Bird

Florida Environment & Natural History Collections



TOPOGRAPHY OF A BIRD.

H. H. B.
6/20/29.

Citation: Bailey, Harold H. (Harold Harris), and George Miksch Sutton. *The Birds of Florida : a Popular and Scientific Account of the 425 Species and Subspecies of Birds That Are Now, and That Have Been Found Within the State and Its Adjacent Waters; with Special Reference to Their Relation to Agriculture*. Limited ed. Baltimore, Md: Privately published for the author by Williams & Wilkins, 1925. Print.



UNIVERSITY of
SOUTH FLORIDA
Libraries

USF Libraries - Tampa Special
Collections #ColorOurCollections
2023 Edition

Malaysian Moon Moth and Large Candy-Striped Hawkmoth

Florida Environment & Natural History Collections



Citation: Westwood, J. O. (John Obadiah). *The Cabinet of Oriental Entomology : Being a Selection of Some of the Rarer and More Beautiful Species of Insects, Natives of India and the Adjacent Islands, the Greater Portion of Which Are Now for the First Time Described and Figured.* London: W. Smith, 1848. Print.



UNIVERSITY of
SOUTH FLORIDA
Libraries

USF Libraries - Tampa Special
Collections #ColorOurCollections
2023 Edition

Fish Anatomy Diagram

Florida Environment & Natural History Collections

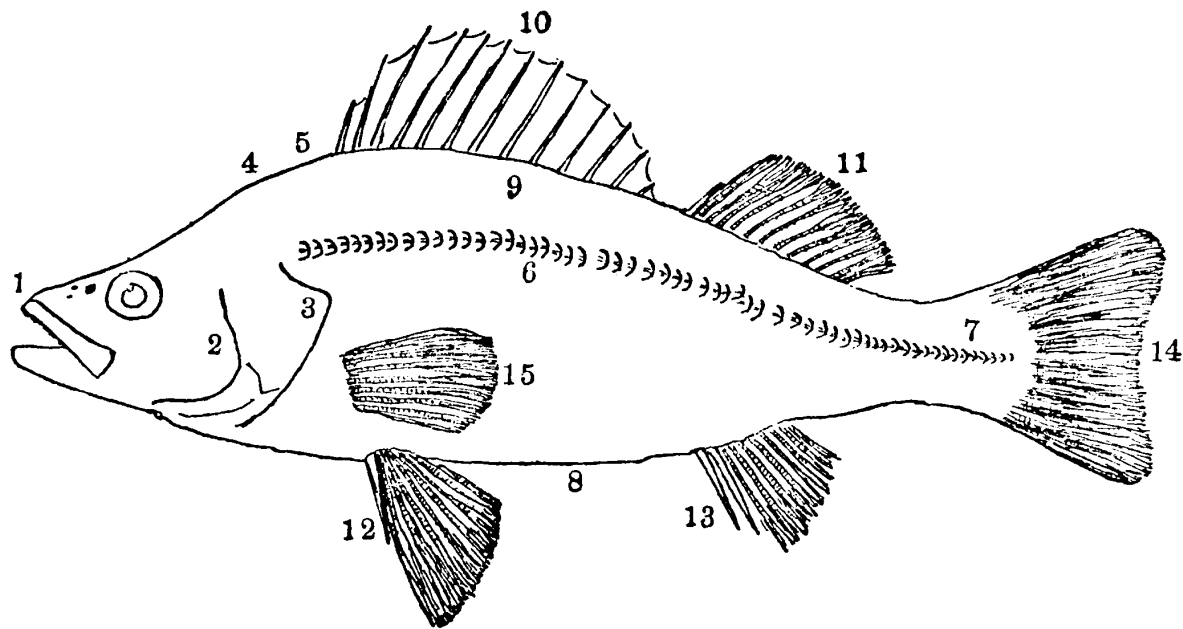


DIAGRAM OF EXTERNAL STRUCTURAL FEATURES

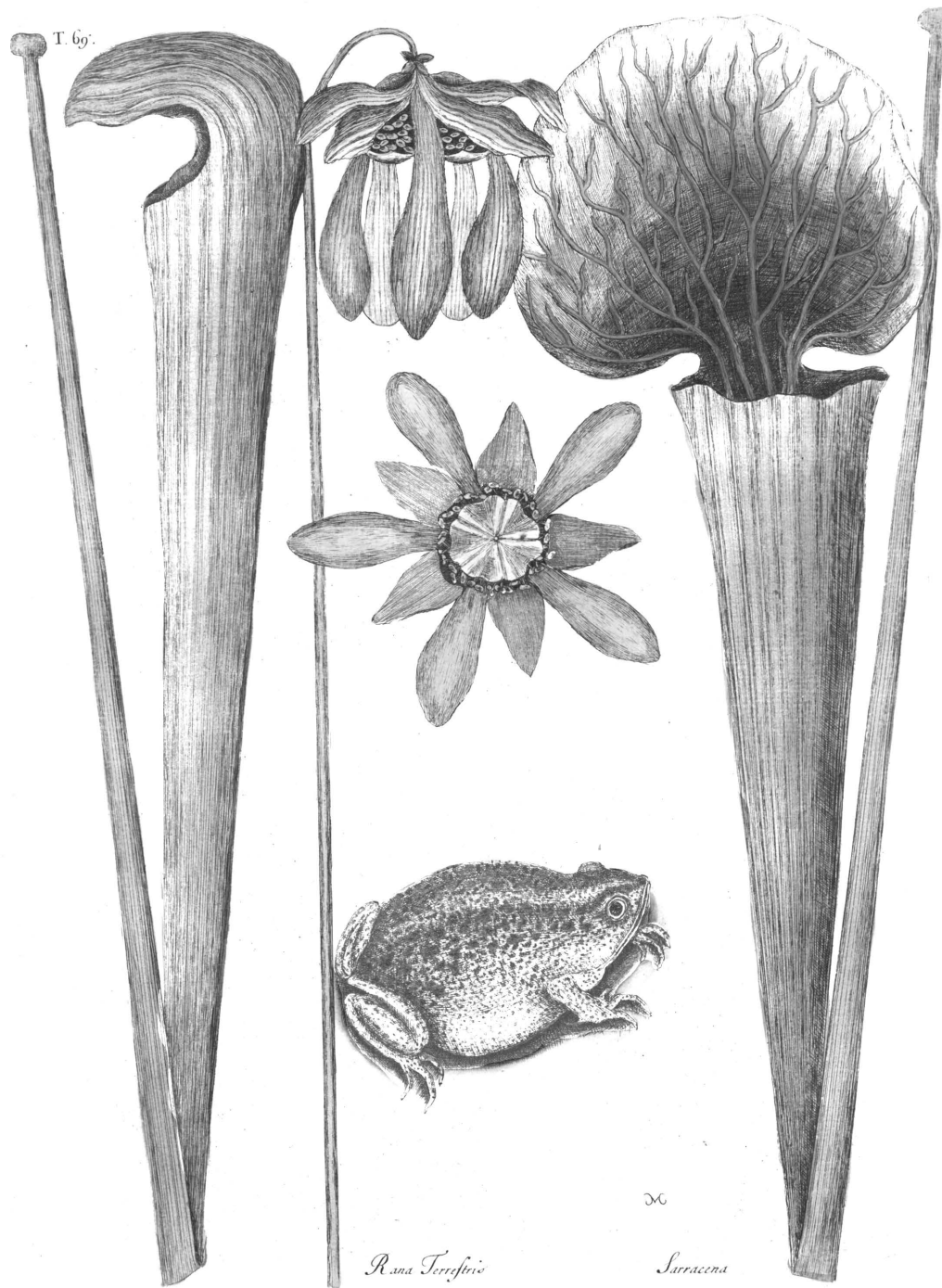
- | | |
|-------------------------------------|-----------------------|
| 1. Snout | 8. Ventral line |
| 1-4. Profile | 9. Dorsal line |
| 2. Cheek-bone (<i>preopercle</i>) | 10. First dorsal fin |
| 3. Gill-cover (<i>opercle</i>) | 11. Second dorsal fin |
| 4. Nape | 12. Ventral fin |
| 5. Shoulder | 13. Anal fin |
| 5-6-7. Lateral line | 14. Caudal fin |
| 7. Base of caudal fin | 15. Pectoral fin |

Citation: Holder, Charles Frederick. *The Big Game Fishes of the United States*. New York: Macmillan, 1903. Print.



Frog and Pitcher Plants

Florida Environment & Natural History Collections



Citation: Catesby, Mark, and George Edwards. *Natural History of Carolina, Florida, and the Bahama Islands: Containing the Figures of Birds, Beasts, Fishes, Serpents, Insects and Plants: Particularly the Forest-Trees, Shrubs and Other Plants, Not Hitherto Described, or Very Incorrectly Figured by Authors. ...To Which Are Added, Observations on the Air, Soil, and Waters: With Remarks upon Agriculture, Grain, Pulse, Roots, &c..* London: Printed for C. Marsh [etc.], 1754.

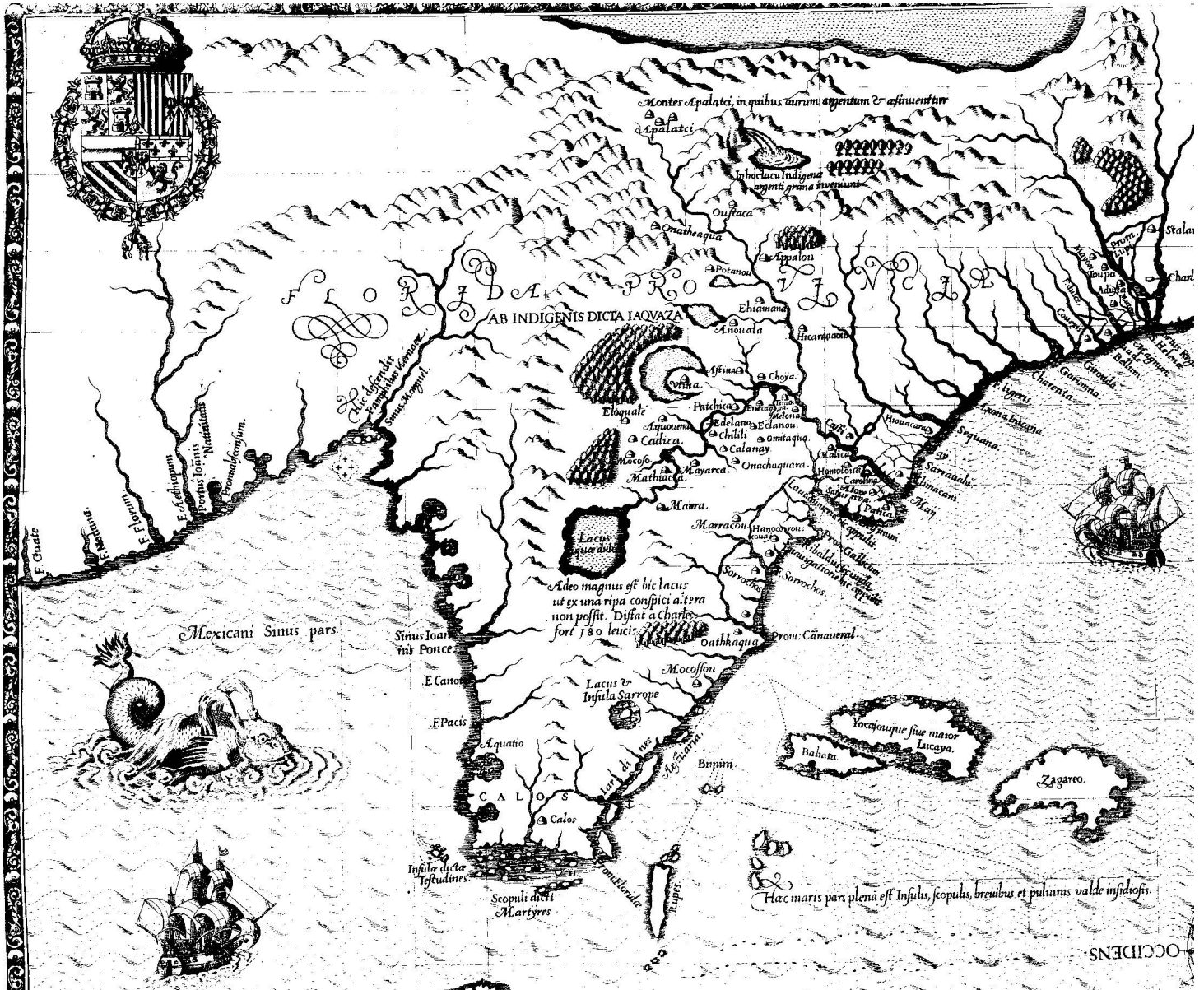


UNIVERSITY of
SOUTH FLORIDA
Libraries

USF Libraries - Tampa Special
Collections #ColorOurCollections
2023 Edition

Early Map of Florida (1591 A.D.) by Jacques Le Moyne de Morgues

Florida Environment & Natural History Collections



Citation: Bry, Theodor de, Johann Wechel, and Jacques Le Moyne de Morgues. *Brevis narratio eorum quae in Florida Americae provi[n]cia Gallis acciderunt : secunda in illam navigatione, duce Renato de Laudo[n]niere classis praefecto, anno MDLXIII : quae est secunda pars Americae, additae figurae & incolarum eicones ibidem ad vivu[m] expressae, brevis item declaratio religionis, vitium, vivendique ratione ipsorum.* Francoforti ad Moenum: Typis Ioan[n]is Wecheli, sumtibus vero Theodori de Bry, venales reperiu[n]tur in officina S. Feirabe[n]dii, 1591. Print.



UNIVERSITY of
SOUTH FLORIDA
Libraries

USF Libraries - Tampa Special
Collections #ColorOurCollections
2023 Edition

Moonbeam Brand Citrus Label

Florida Environment & Natural History Collections



Citation: [Moonbeam Brand Citrus Label], [MacManus Citrus Label collection], USF Libraries - Tampa Special Collections, University of South Florida, Tampa, FL.



UNIVERSITY of
SOUTH FLORIDA
Libraries

USF Libraries - Tampa Special
Collections #ColorOurCollections
2023 Edition



#ColorOurCollections

2023 Edition

Contact Us:
spcinfo@usf.edu

Follow Us:
[@USFSpecColl](https://twitter.com/USFSpecColl)
[@USFLibraries](https://twitter.com/USFLibraries)

The University of South Florida Libraries' Florida Environment and Natural History (FLENH) meta-collection is the newest collecting initiative that brings accessible, data-driven research materials to students and scientists at USF and around the world. The collection includes rare books, like those featured here, that illustrate patterns of scientific exchange, travel, and history.

FLENH Portal:



Cover Art: Boreman, Thomas. *A Description of a Great Variety of Animals and Vegetables : Viz. Beasts, Birds, Fishes, Insects, Plants, Fruits, and Flowers / Extracted from the Most Considerable Writers of Natural History; and Adapted to the Use of All Capacities, but More Particularly for the Entertainment of Youth ; Being a Supplement to A Description of Three Hundred Animals...* London: Printed for F. Gyles in Holbourn, 1736. Print



UNIVERSITY of
SOUTH FLORIDA
Libraries

USF Libraries - Tampa Special Collections
lib.usf.edu/special-collections/tampa/