



Meyerstein, Edward Harry William, et al. *Black and White Magic*. Oxford : B.H. Blackwell, 1917.



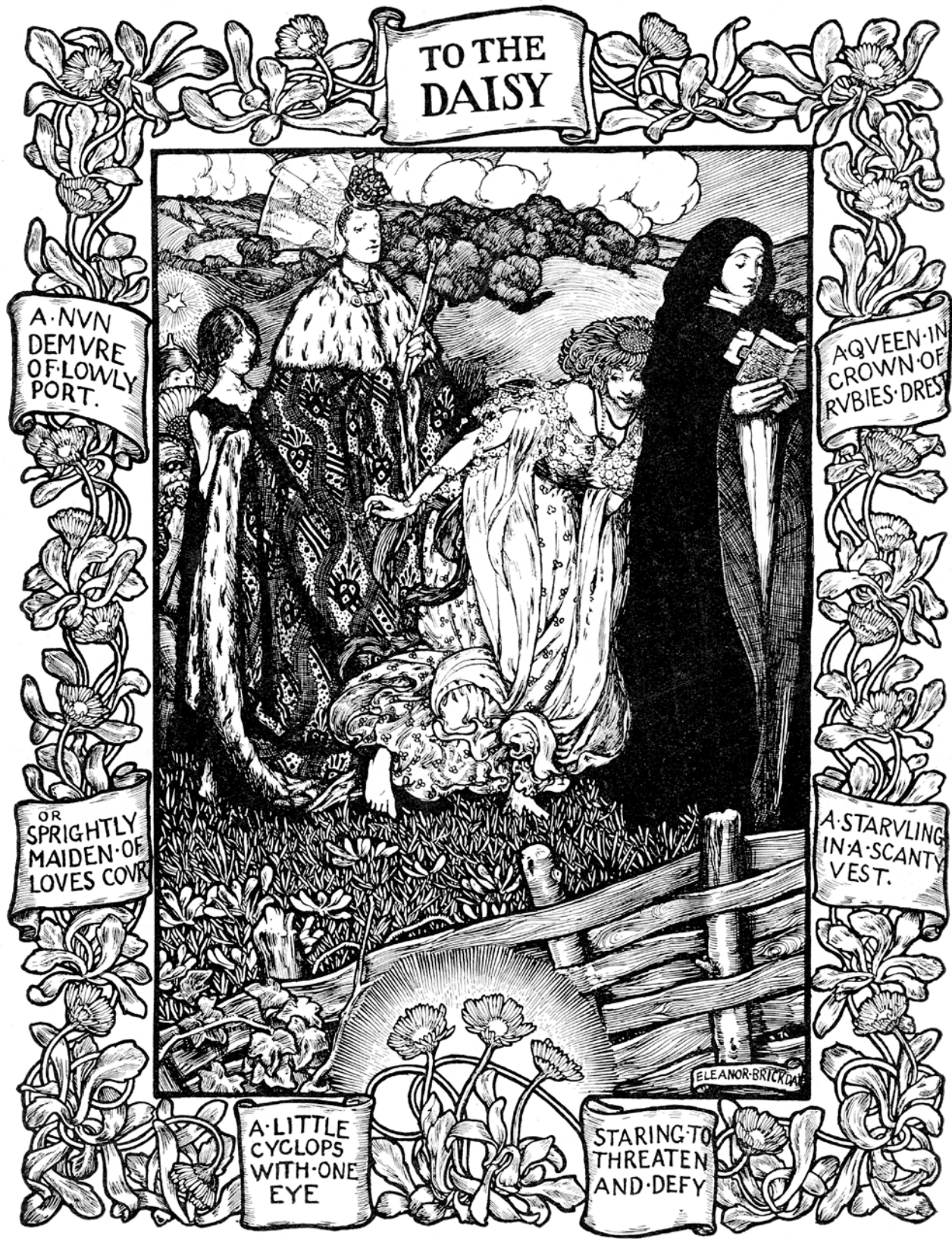
Allen, Frank. *The Strathmore Quality Book Papers*. Volume 1; Series 149. The Munder-Thomsen Press, Baltimore, Md., 1905.



Salaman, Malcolm C, and Holme, C. Geoffrey. *British Book Illustration Yesterday and Today*. London : The Studio, Ltd., 1923.



Salaman, Malcolm C, and Holme, C. Geoffrey. *British Book Illustration Yesterday and Today*. London : The Studio, Ltd., 1923.



Salaman, Malcolm C, and Holme, C. Geoffrey. *British Book Illustration Yesterday and Today*. London : The Studio, Ltd., 1923.



Crane, Walter, et al. *Pan-pipes : A Book of Old Songs*. Second Edition. London : Novello & Co. : G. Routledge and Sons, 19--

This image is from the collection of

#ColorOurCollections



UNIVERSITY OF  
**WATERLOO**



Allen, Frank. *The Strathmore Quality Book Papers*. Volume 1; Series 149. The Munder-Thomsen Press, Baltimore, Md., 1905.

For more coloring pages, visit [ColorOurCollections.org](http://ColorOurCollections.org)



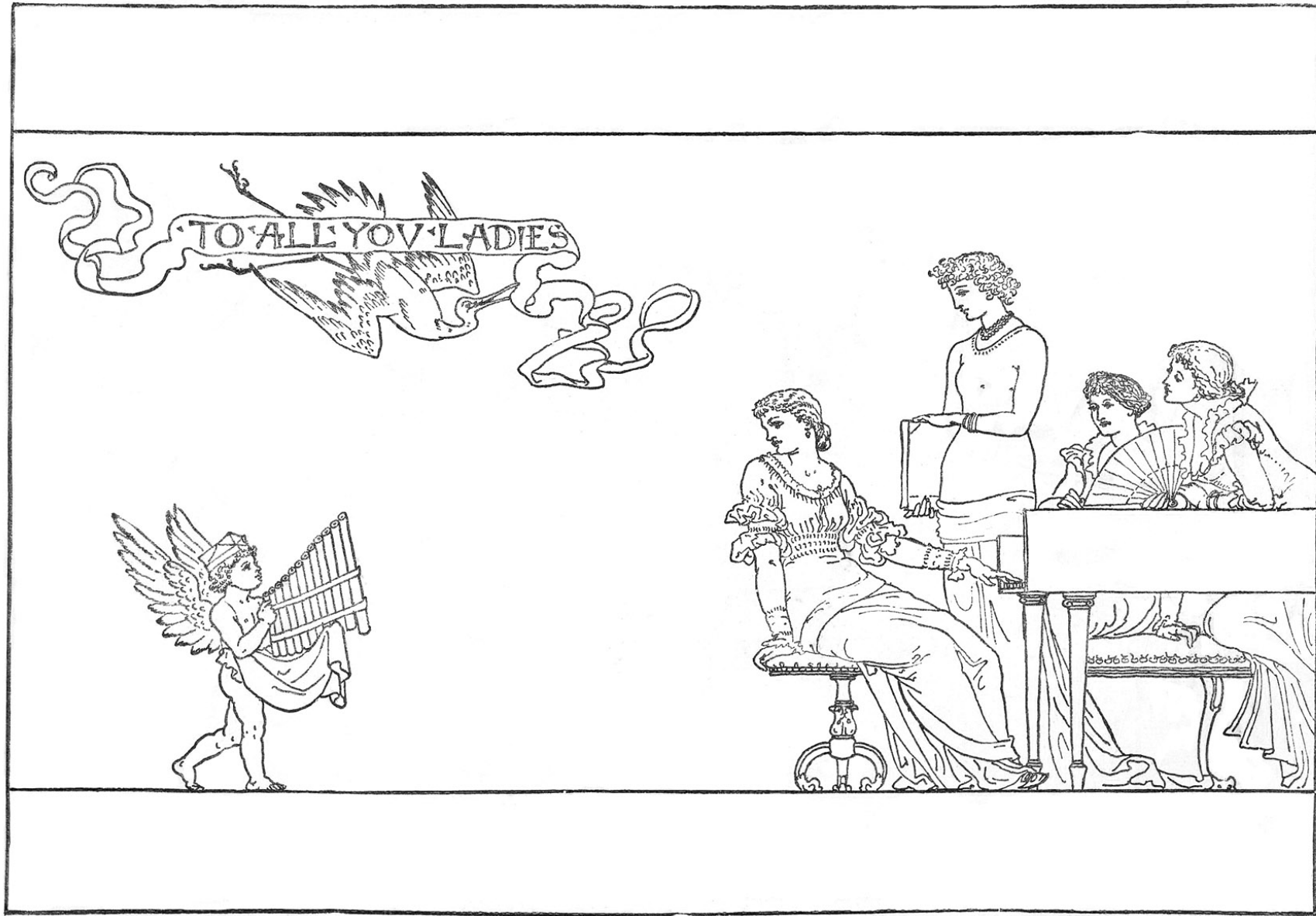
MACHINERY HALL,

Banks, Charles Eugene. *The Artistic Guide to Chicago and the World's Columbian Exposition*. Chicago : R. S. Peale Co. 1892.





University of Waterloo Special Collections and Archives. Women's Domestic Work Advertisements Collection. GA384.



Crane, Walter, et al. *Pan-pipes : A Book of Old Songs*. Second Edition. London : Novello & Co. : G. Routledge and Sons, 19--