



Drawn by R. W. Billings

Engraved by G. Gladwin

CARLISLE CATHEDRAL.
THE CHOIR—LOOKING EAST.

COLOR OUR COLLECTIONS

KANSAS STATE
UNIVERSITY

Libraries

From the collections in the Paul Weigel Library of
Architecture, Planning & Design located in 323 Seaton Hall

Robert William Billings, illustrator. *Carlisle Cathedral: The Choir... Looking East.*
From his *Architectural Illustrations, History and Description of Carlisle Cathedral*. London: T & W. Boone, 1840.

Suggestions for afternoon frocks

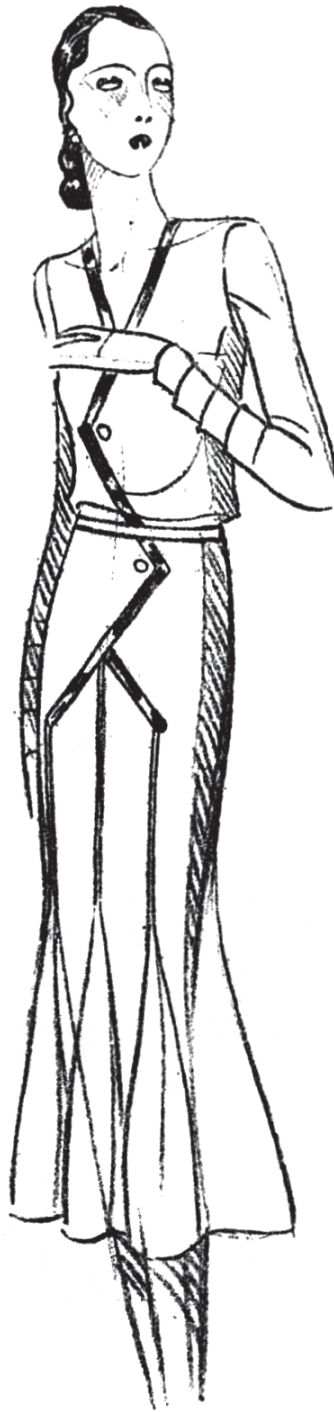
SUITABLE FOR ANY AGE

This dress is made of A.G.B. "Ida" crepe georgine; the wrists and the middle of the body are of "Milbourg" satin.

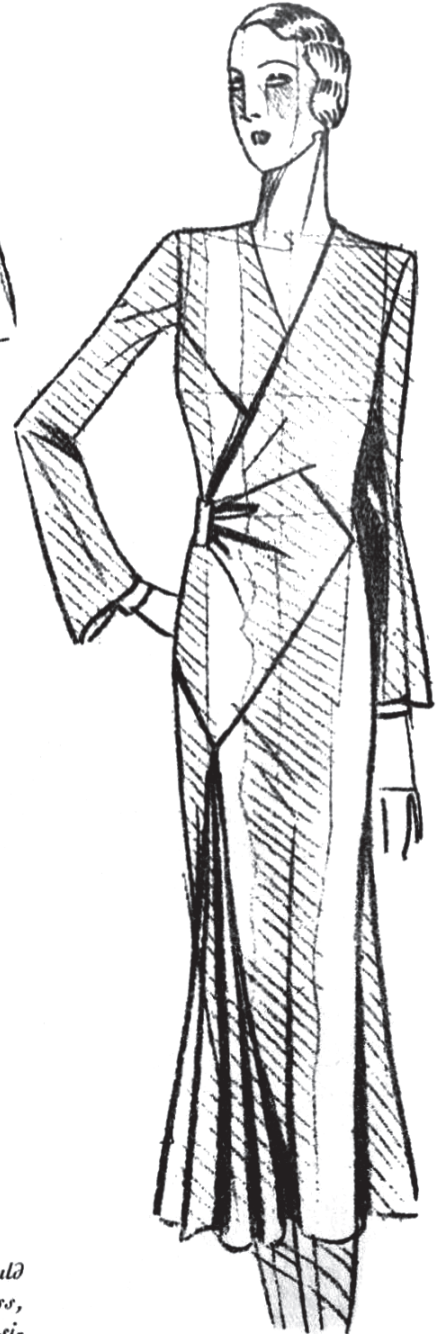


Drawings by MM^{lles} Colette, Dody ;
MM. Drivon, Roger Brard,
Valentin.

A.G.B. "Tiflis" crepe faille would be just the thing for this dress. The flounces on the sleeve should be made of "Ida" crepe georgine.



Black velvet of good quality would be the right material for this dress, which is very simply cut and is designed to make the line as slender as possible.



COLOR OUR COLLECTIONS

KANSAS STATE
UNIVERSITY

Libraries

From the collections in the Richard L.D. and Marjorie J. Morse
Department of Special Collections located on the fifth floor of Hale Library

Suggestions for Afternoon Frocks Suitable for Any Age.
From Art Goût Beauté: Feuilles de L'Elegance. No. 124. Paris and New York: Noël 1930.



C. E. Faxon del.

CRATÆGUS MOLLICULA, Sarg.

COLOR OUR COLLECTIONS