

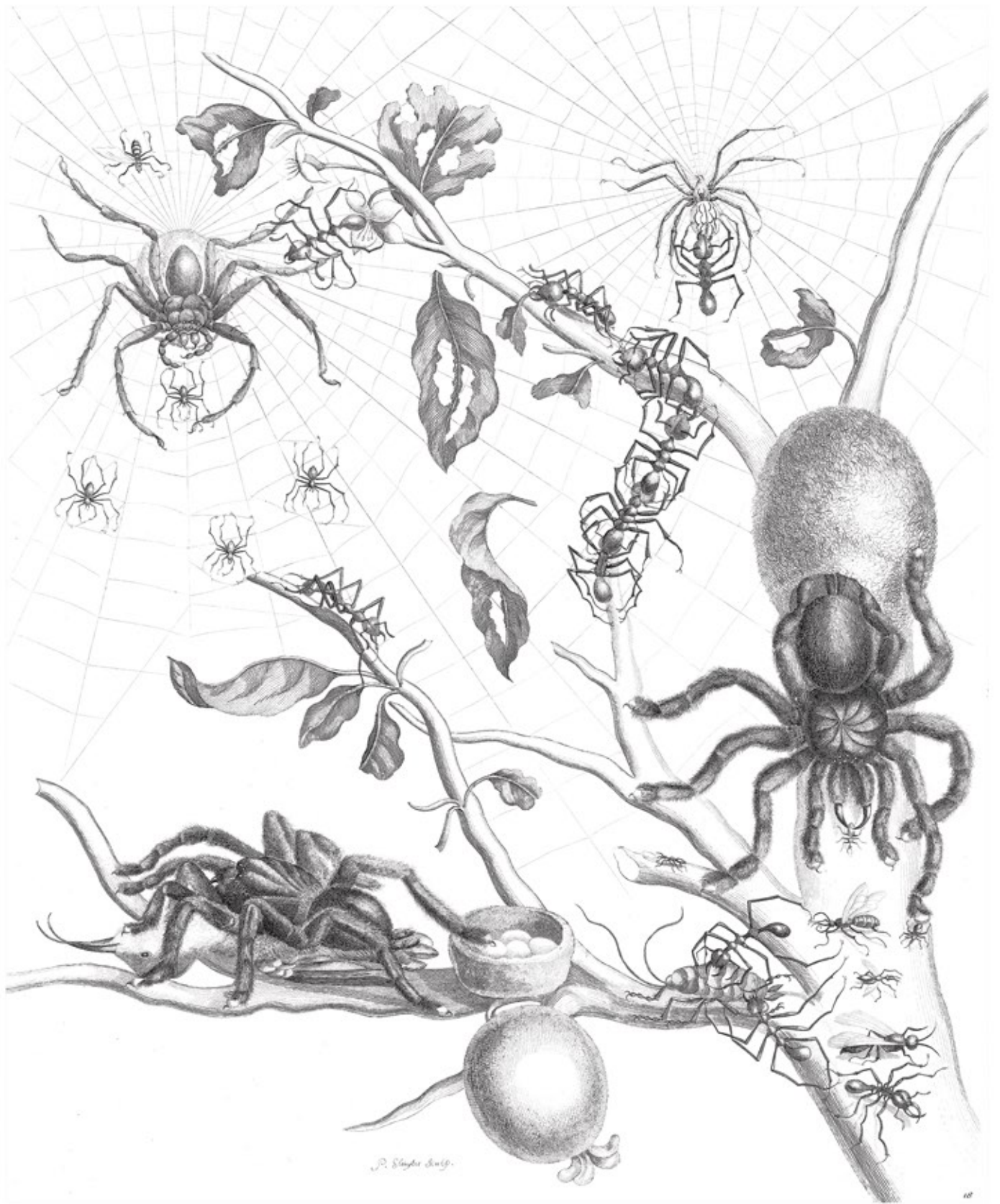
MARIA SIBYLLA MERIAN (1647-1717)

*Metamorphosis Insectorum Surinamensium*

Color Plate: Amsterdam, 1719

Black and White Plate: Amsterdam, 1705





MARIA SIBYLLA MERIAN (1647-1717)

*Metamorphosis Insectorum Surinamensium*

Color Plate: Amsterdam, 1719

Black and White Plate: Amsterdam, 1705







MARIA SIBYLLA MERIAN (1647-1717)

*Metamorphosis Insectorum Surinamensium*

Color Plate: Amsterdam, 1719

Black and White Plate: Amsterdam, 1705





*Scilicet Sculp.*

MARIA SIBYLLA MERIAN (1647-1717)

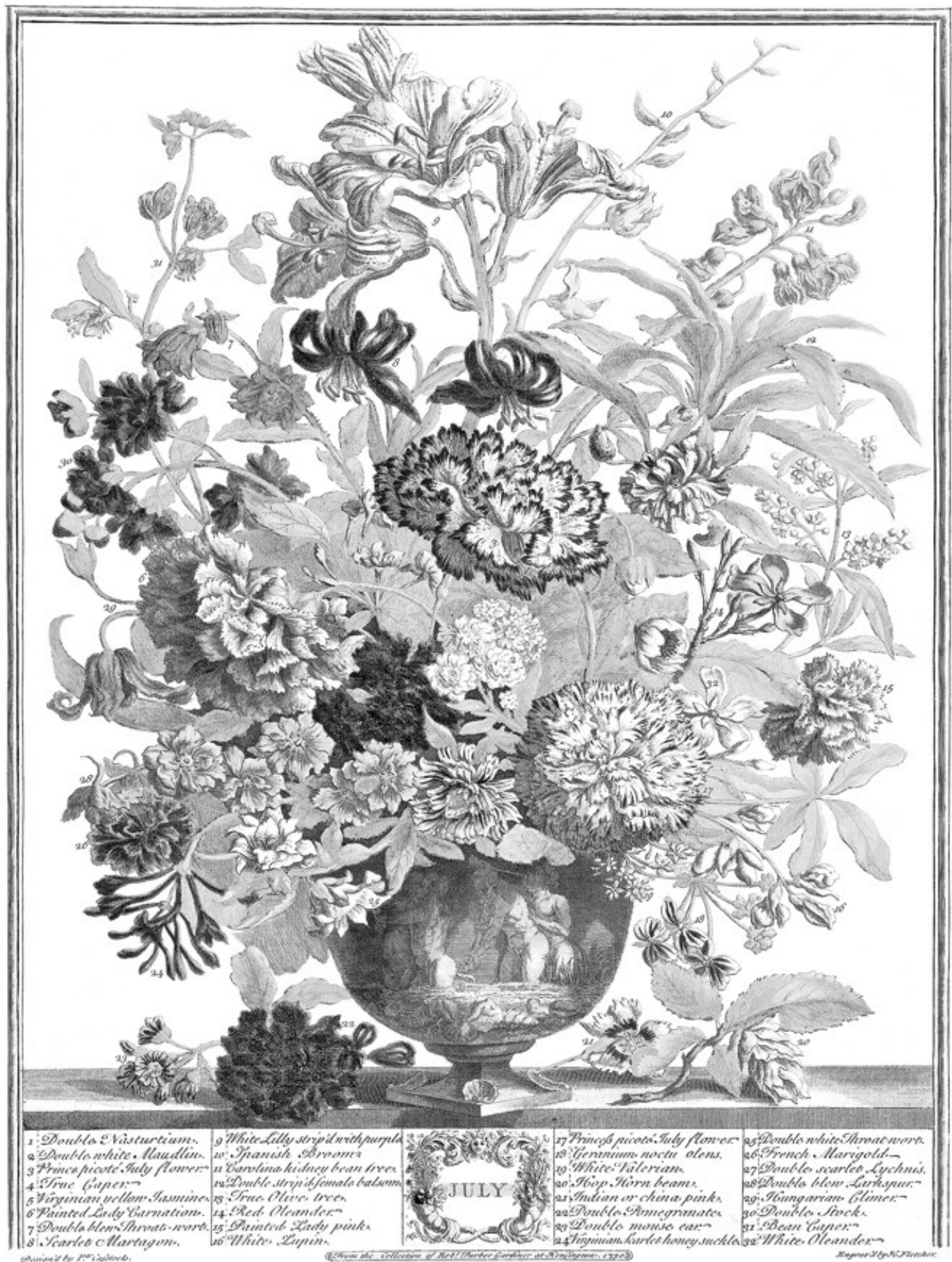
*Metamorphosis Insectorum Surinamensium*

Color Plate: Amsterdam, 1719

Black and White Plate: Amsterdam, 1705







ROBERT FURBER (1674-1756)

*Twelve Months of Flowers*

Color Plate(color removed): London, 1730

Engraved by Henry Fletcher from a painting by Pieter Casteels



OAK SPRING  
GARDEN FOUNDATION







Apricocks.	18	Red heart.	18	Black diamond heart.	18	Great murray	18	Small purple.	18	Grey muscat.	18
Muscadines.	19	Coronation.	19	Curriants.	19	Early green	19	Peaches.	19	Black muscat.	19
Oranges.	20	Richmond duke.	20	Red & white.	20	Black walnut	20	Black nutmeg.	20	Primative.	20
Apples.	21	Lake ward.	21	Red & blue leaves.	21	Old black.	21	White nutmeg.	21	Green de Carmes.	21
Tanberry.	22	Imperial.	22	Gooseberries.	22	Great green	22	Plumbs.	22	Raspberries.	22
Yellow.	23	Black heart.	23	Grimson	23	Transparent	23	Blow hastive.	23	Black Dutch	23
Red.	24	White heart.	24	Yellow Dutch	24	Yellow hastive.	24	Black hastive.	24	White Dutch	24
Maryard.	25	Red heart.	25	Yellow Dutch	25	Globe Champagne	25	White hastive.	25	Black hastive	25
Cherries.	26	Great red heart.	26	Red Dutch	26	Yellow hair'd	26	Grey hastive.	26	White hastive	26
		Blasvigne heart.	27	Small white.	27	Mulberries.	27	Pears.	27	Black hastive	27

JUNE  
1732

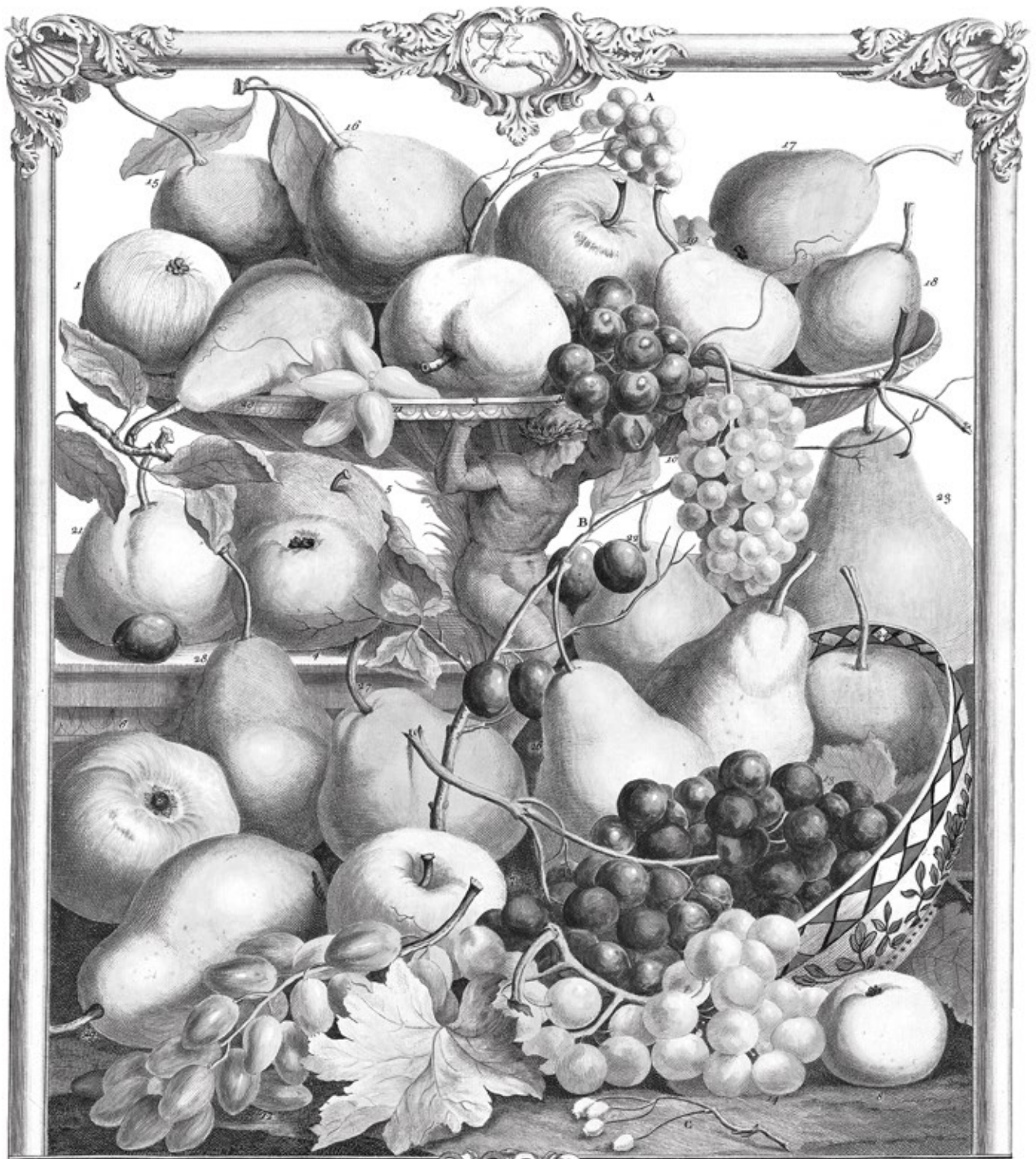
Design by P. Casteels. From the Collection of Robert Furber gardener at Kensington 1725. Engraved by H. Fletcher.

ROBERT FURBER (1674-1756)  
*Twelve Months of Fruit*  
 Color Plate(color removed): London, 1732

Engraved by Henry Fletcher from a painting by Pieter Casteels







Apples		Grapes		Pears	
1 Windsor Pearm.	6 Red Calville	10 White Muscatelle	14 Bedford gold	18 Bezo D'Hyper	22 Rough S. Germain
2 Red Cour pendue	7 Golden Parnain	11 Warner's Spanish	17 Lashafervic	19 Spanish-beez	23 E. Andre
3 White Calville	8 Silver Pippin	12 Blue Cosmell	18 Kowlet La Reine	24 Ambrett	24 Sic. Naples
4 Whalers Kuyler	9 Malines	13 White Maderaz	19 Amadott	25 Angelica	25 A. leav's Service
5 Broadlee	10 Bartling or Kenish	14 Grosseau	20 Virgo luca	26 Golden Bell	26 Great Bull's
			21 Menricur John	27 Mather gr. butter	27 C. Yellow Haugh

Designed by P. Casteels. From the Collection of Mr. Furber Gardiner at Kensington: 1732. Engraved by Sam. Smith.

ROBERT FURBER (1674-1756)

*Twelve Months of Fruit*

Color Plate(color removed): London, 1732

Engraved by Henry Fletcher from a painting by Pieter Casteels



OAK SPRING  
GARDEN FOUNDATION





ABRAHAM MUNTING (1626-1683)

*Phytographia Curiosa*

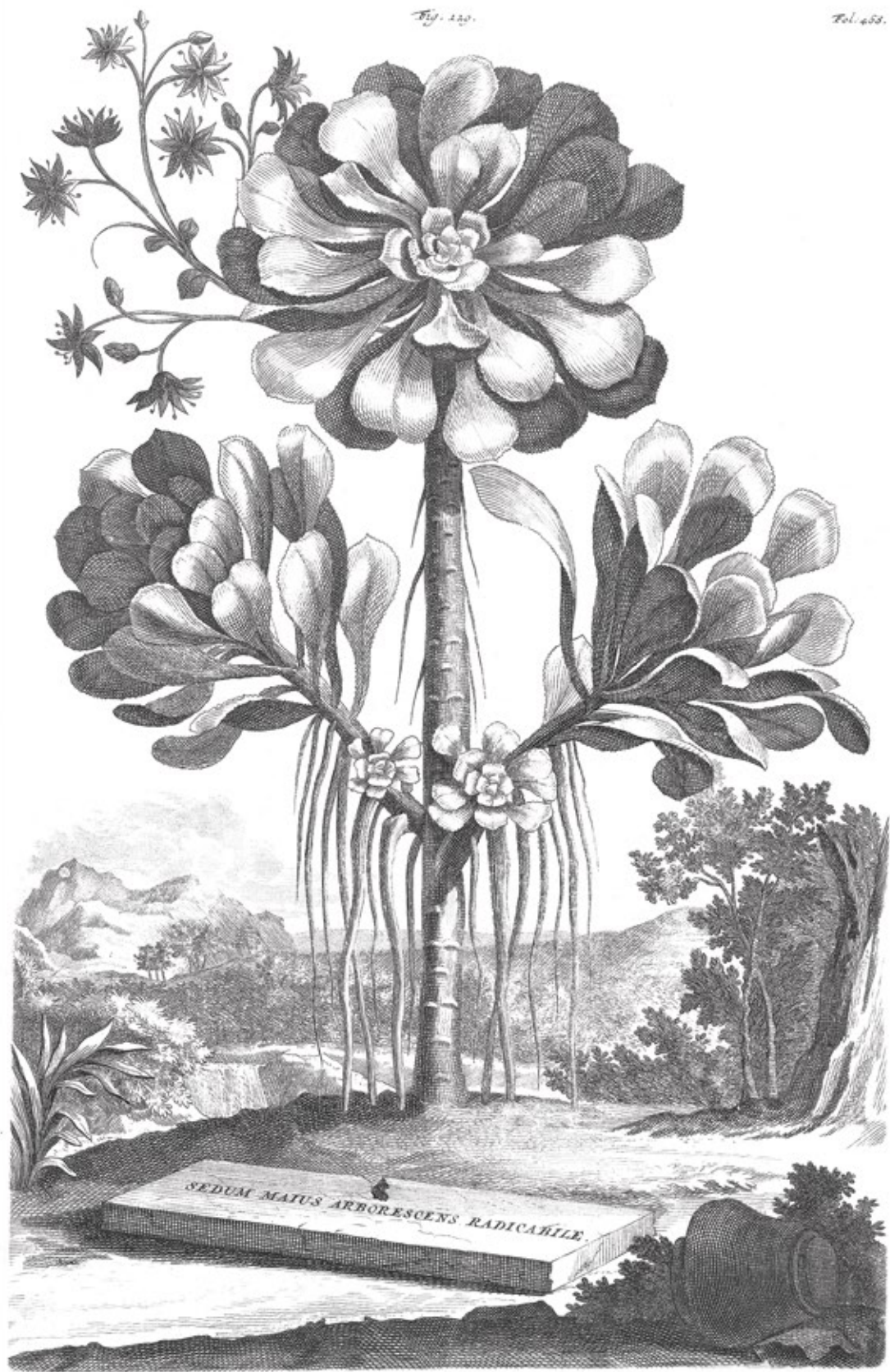
Color Plate: Amsterdam, 1713

Black and White Plate: Amsterdam, 1727



OAK SPRING  
GARDEN FOUNDATION





ABRAHAM MUNTING (1626-1683)

*Phytographia Curiosa*

Color Plate: Amsterdam, 1713

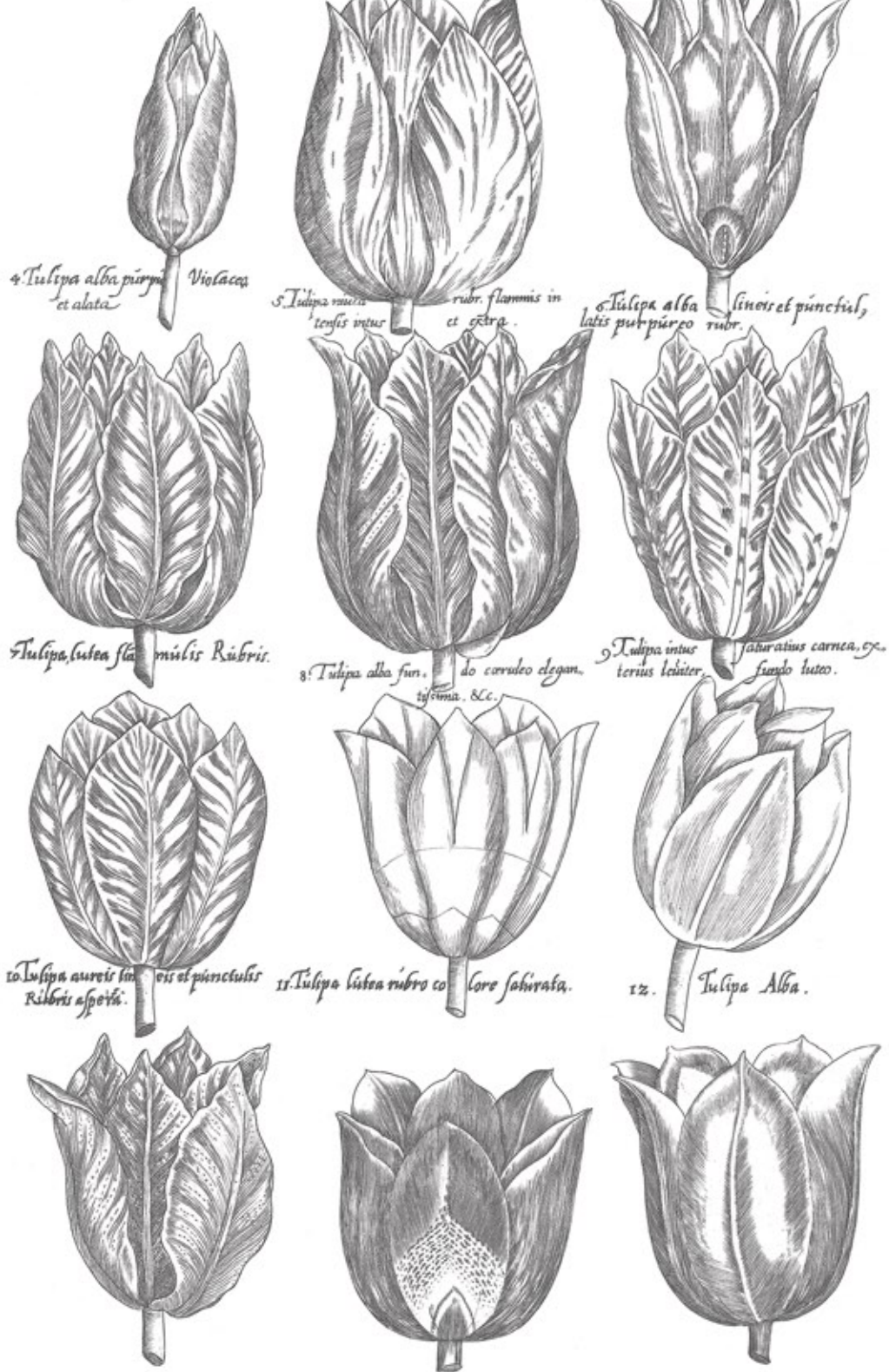
Black and White Plate: Amsterdam, 1727



OAK SPRING  
GARDEN FOUNDATION



1 *Tulipa Persica.* 2 *Tulipa tricolor alba subpurpureo colore, s. Tulipa borbocirra fl.* Rubro. 8  
*flammas cramoisii. color.*



EMANUEL SWEERT (1552-1612)

*Florilegium*

Color Plate: Frankfurt, 1612-1614

Black and White Plate: Amsterdam, 1631





1. Anemone Calcedonica maior flore  
Viridi pleno Violaceo rubentibus  
luteis nectum descripta.



ANEMONES LATISFOLIA SPECIES  
2. Anemone Pavo maior flo: pleno Rubro.



3. Anemone Calcedonica maxima Vir-  
idibus lineis distincta.



4. Anemone Pavo flore Circulato  
Phanicy coloris.



7. Anemone Violacea elegans nectum  
descripta.



5. Anemone Pavo flore Circulato  
Phanicy coloris.



6. Anemone Carnica intensa.



8. Anemone Orygia ca elegans.



9. Anemone Carmo. fina.



10. Anemone obscure Violacea.



11. Anemone Carmo. Colonid.



12. Anemone purpurea pallida.



13. Anemone purpurea ca.



EMANUEL SWEERT (1552-1612)

*Florilegium*

Color Plate: Frankfurt, 1612-1614

Black and White Plate: Amsterdam, 1631





1. *Malum punicum.*

2. *Aranfia.*

40



3. *Limones minores.*

4. *Limones maiores.*



EMANUEL SWEERT (1552-1612)

*Florilegium*

Color Plate: Frankfurt, 1612-1614

Black and White Plate: Amsterdam, 1631



OAK SPRING  
GARDEN FOUNDATION





CRISPIJN VAN DE PASSE THE YOUNGER (1589-1670)

*Hortus Floridus*

Color, Black and White Plates:

Arnheim and Utrecht, 1914







CRISPIJN VAN DE PASSE THE YOUNGER (1589-1670)

*Hortus Floridus*

Color, Black and White Plates:

Arnhem and Utrecht, 1914