



Design by Austrian artist Koloman Moser, late 1800's/early 1900's. From *Ver Sacrum*, 1898-1903. Nebehay, Christian Michael. New York : Rizzoli, 1977, c1975.



Trout motif by Austrian artist Koloman Moser, late 1800's/early 1900's. From *Ver Sacrum*, 1898-1903. Nebehay, Christian Michael. New York : Rizzoli, 1977, c1975.



Design, *Fringilla*: Pausias and Glycera, 1895, Will Bradley. From *Bradley: His Graphic Art: A Collection Of His Posters, Illustrations, Typographic Designs & Decorations*. Bradley, Will, Hornung, Clarence Pearson. New York: Dover Publications, 1974.

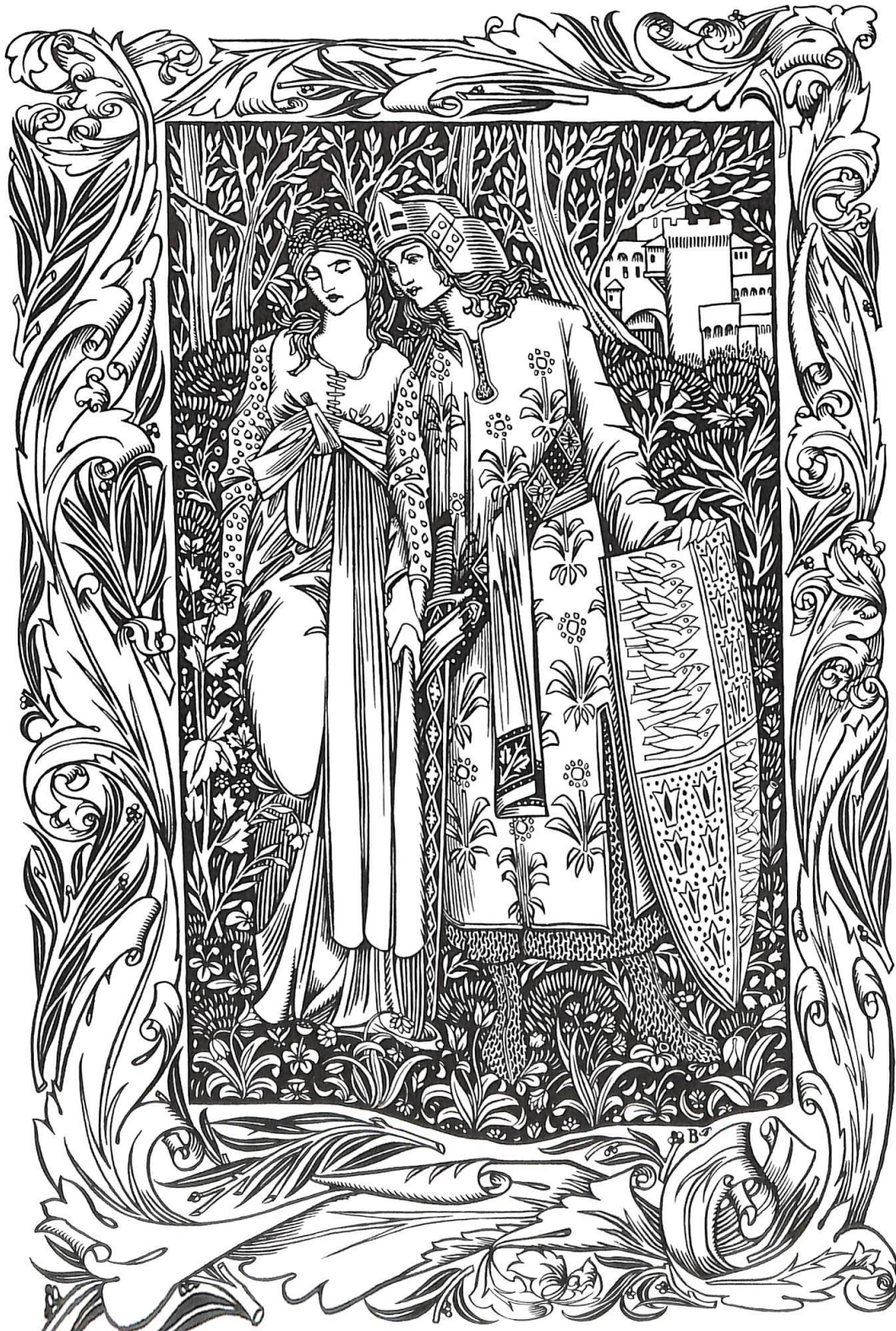
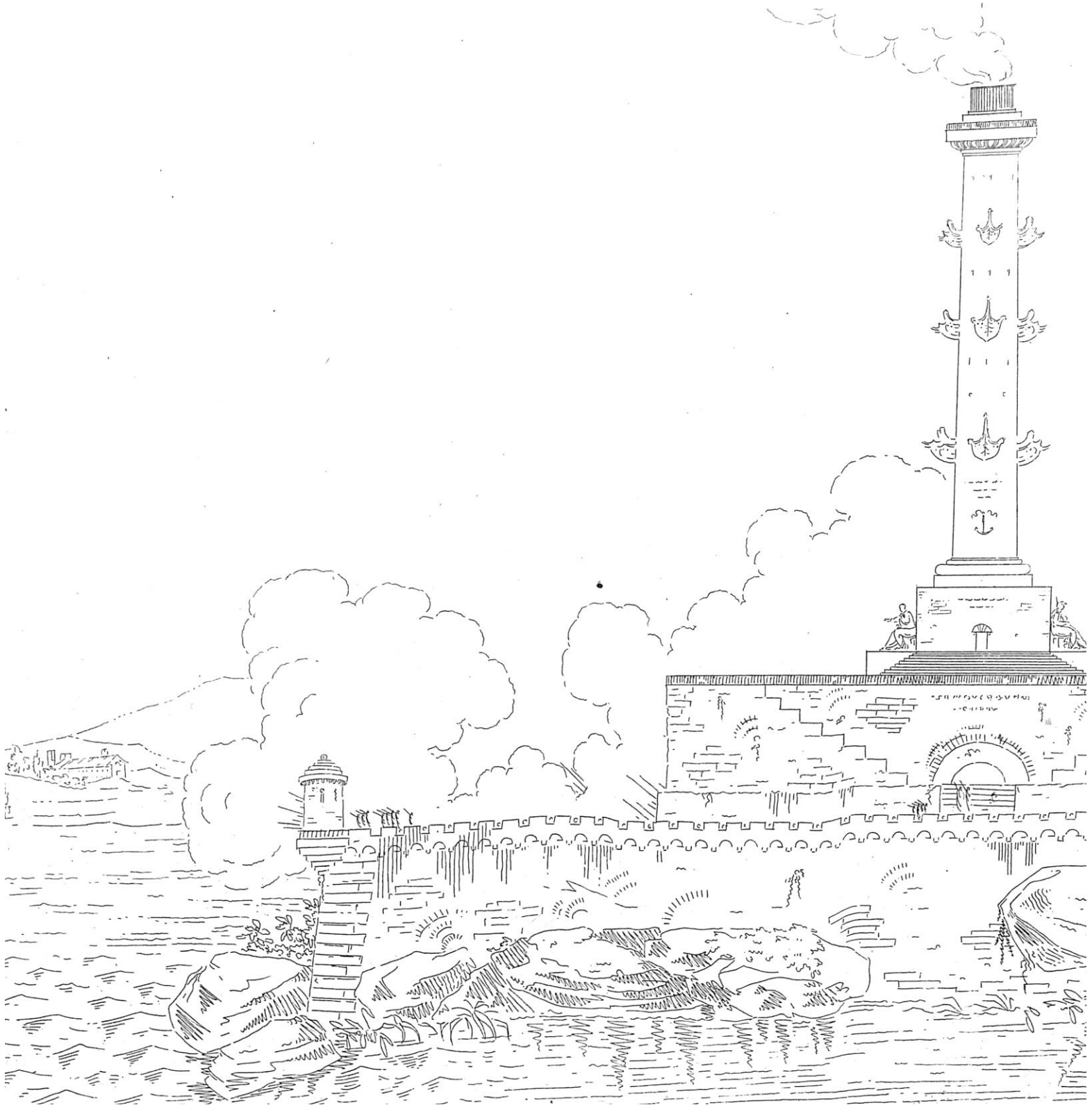


Illustration for "The Shard of the Silver Sword" (unpublished), 1902, Will Bradley. From *Bradley: His Graphic Art: A Collection Of His Posters, Illustrations, Typographic Designs & Decorations*. Bradley, Will, Hornung, Clarence Pearson. New York: Dover Publications, 1974.



Award-winning lighthouse from *Collection Des Prix: Que La Ci-devant Académie D'architecture Proposoit Et Couronnoit Tous Les Ans : Gravée Au Trait, Imprimée Sur Papier Propre à être Lavé*, c. 1787.

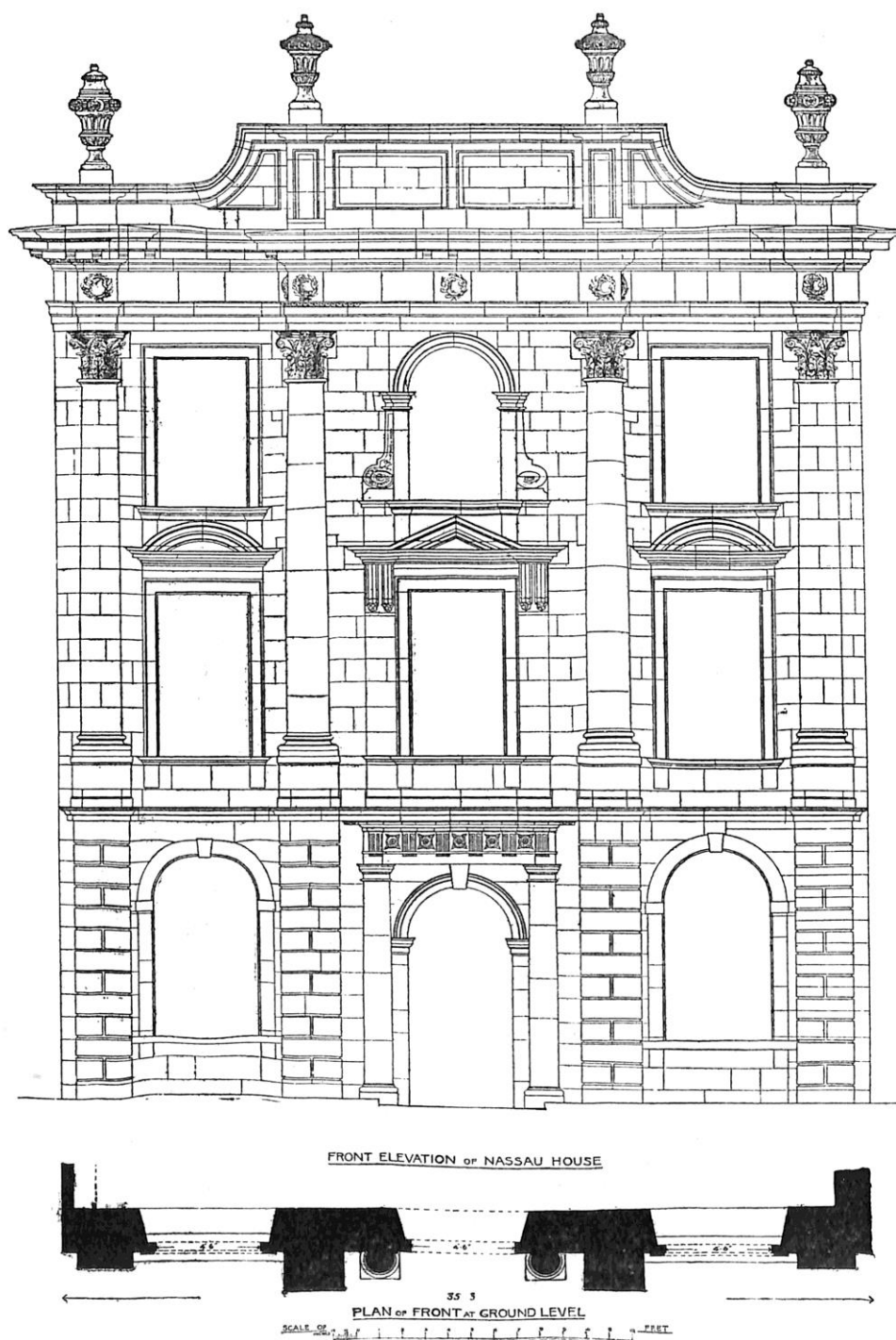
SIGN N^o 37

PLATE N^o 51



Scale $\frac{1}{4}$ inch to the foot.

From *Lakey's Village And Country Houses: Or Cheap Homes For All Classes*. Lakey, Charles D. New York :
American Builder Pub. Co., 1875.



Nassau House, Orange Grove, Bath, England (now demolished). From *The Eighteenth Century Architecture Of Bath*. Bath: G. Gregory, 1904. Green, Mowbray A.