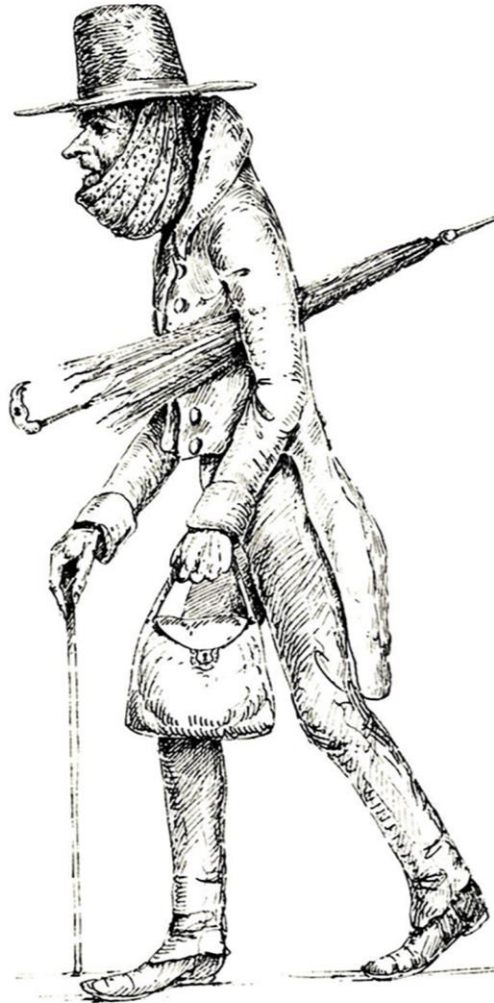




Inoperable
drawn by L. M. Sargent. N. M. D. 1858.



Inoperable: Pen and ink drawing, 1858, by Lucius Manlius Sargent, M.D., Artist to the Massachusetts General Hospital. Many of Dr. Sargent's original sketches, caricatures and anatomical drawings are in the Boston Medical Library in The Francis A. Countway Library of Medicine.

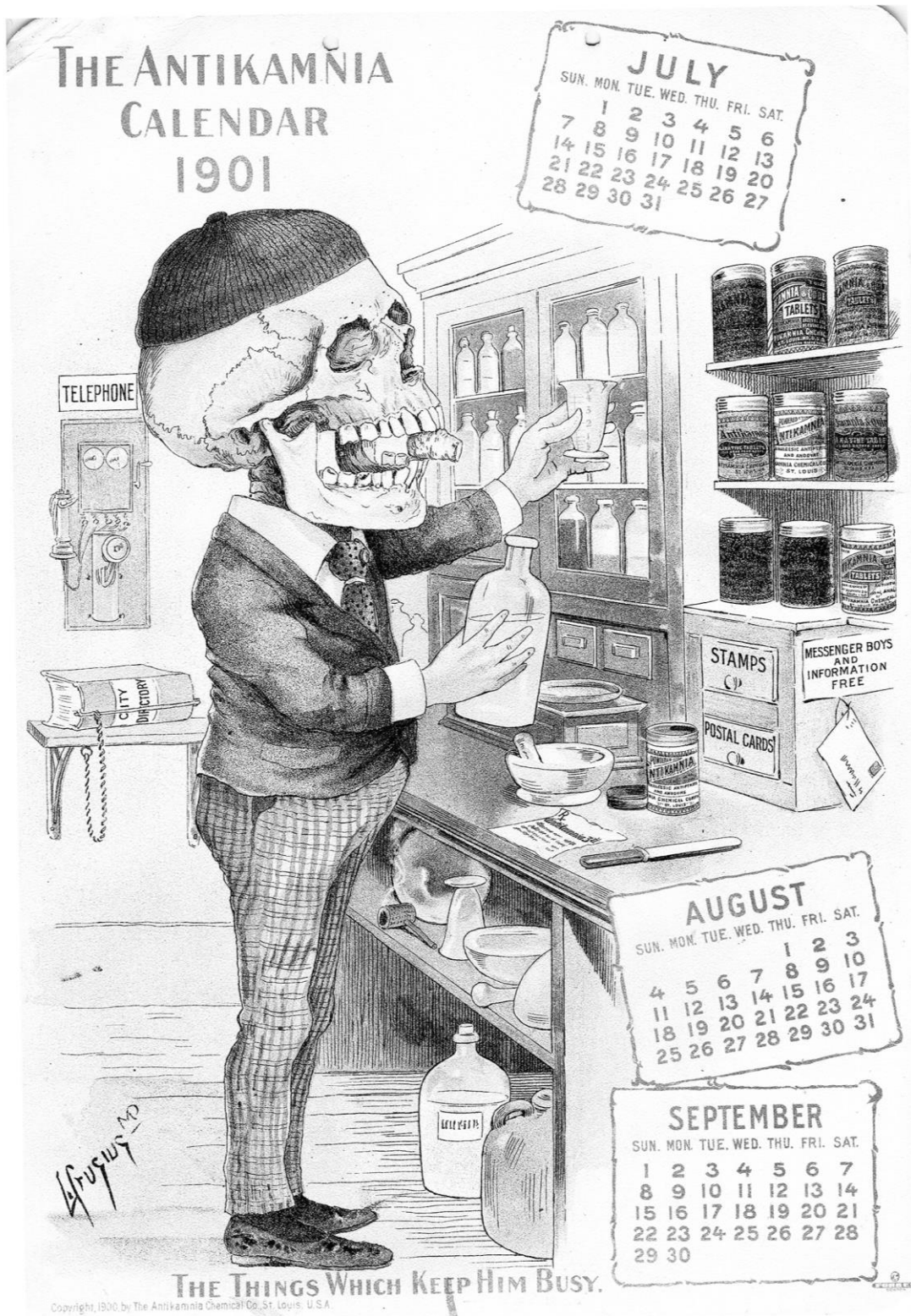
Sargent, L. M. (1858). "Inoperable." Retrieved from the Waring Historical Library Caricatures Collection:
<http://digital.library.musc.edu/cdm/ref/collection/whc/id/56>



No. VI.—THE PATIENT.



Thou victim of relentless fate,
Exhausting life's expiring taper,
We here behold thy **WEAKLY** state
Depleted in our **WEEKLY** Paper.
What train of maladies has led
To this your very sad condition—
Has laid you prostrate on your bed,
A prey to surgeon and physician?



Crusius, L. (1901). "The things that keep him busy." Retrieved from the Waring Historical Library Medical Caricatures Collection: <http://digital.library.musc.edu/cdm/ref/collection/whc/id/39>



Gillray, J. (1799). Punch cures the gout, the colic, and 'Tisick.' Retrieved from the Waring Historical Library Medical Caricatures Collection: <http://digital.library.musc.edu/cdm/ref/collection/whc/id/77>



The Cat has lost her Kitten Find it.



Gilman Brothers Proprietors. "Cat has lost her kitten: Find it." Retrieved from the C. Wayne Weart Apothecary Trade Cards, 1870-1920: <http://digital.library.musc.edu/cdm/ref/collection/weartatc/id/192>