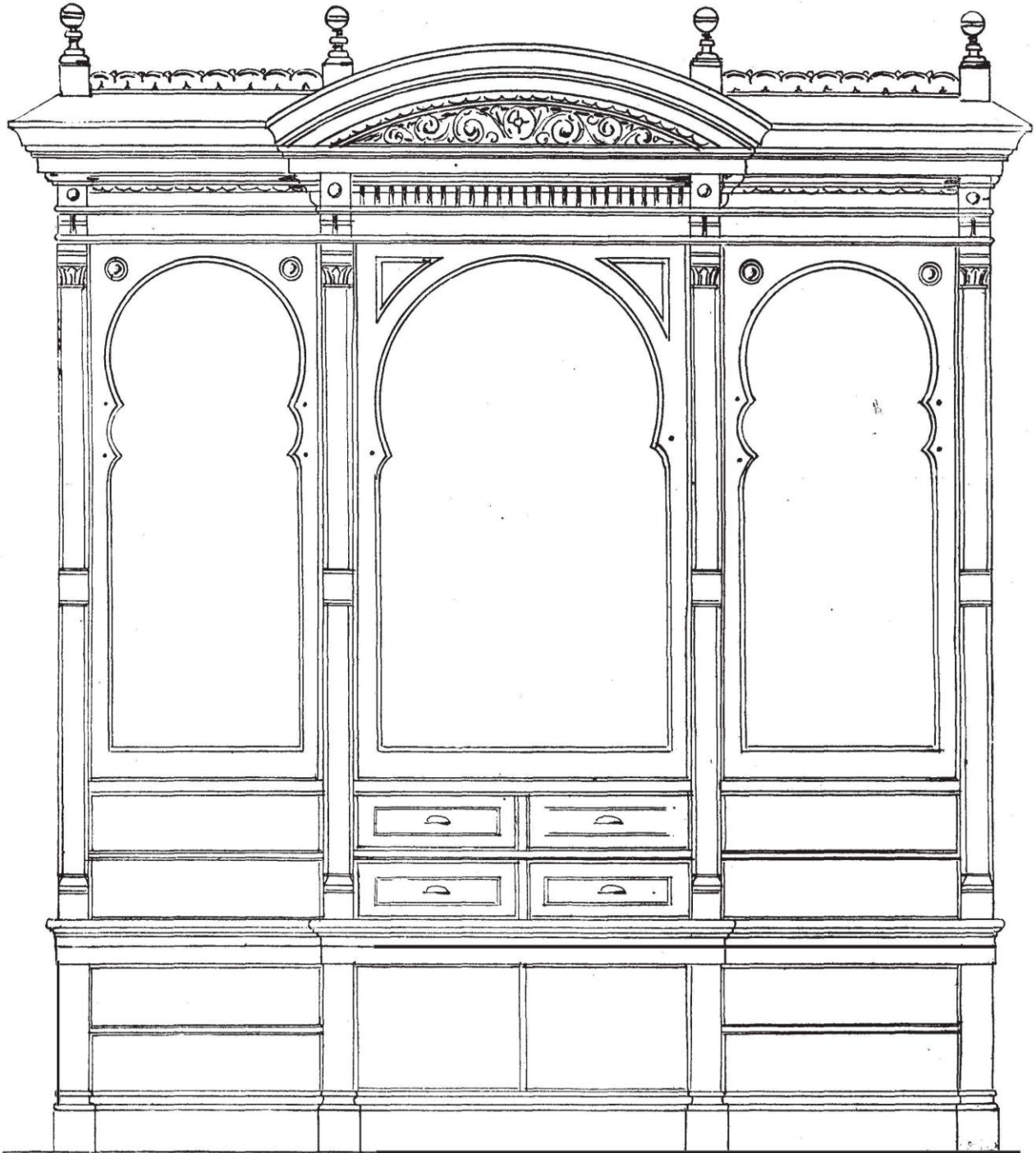


#ColorOurCollections

This image is from the collection of

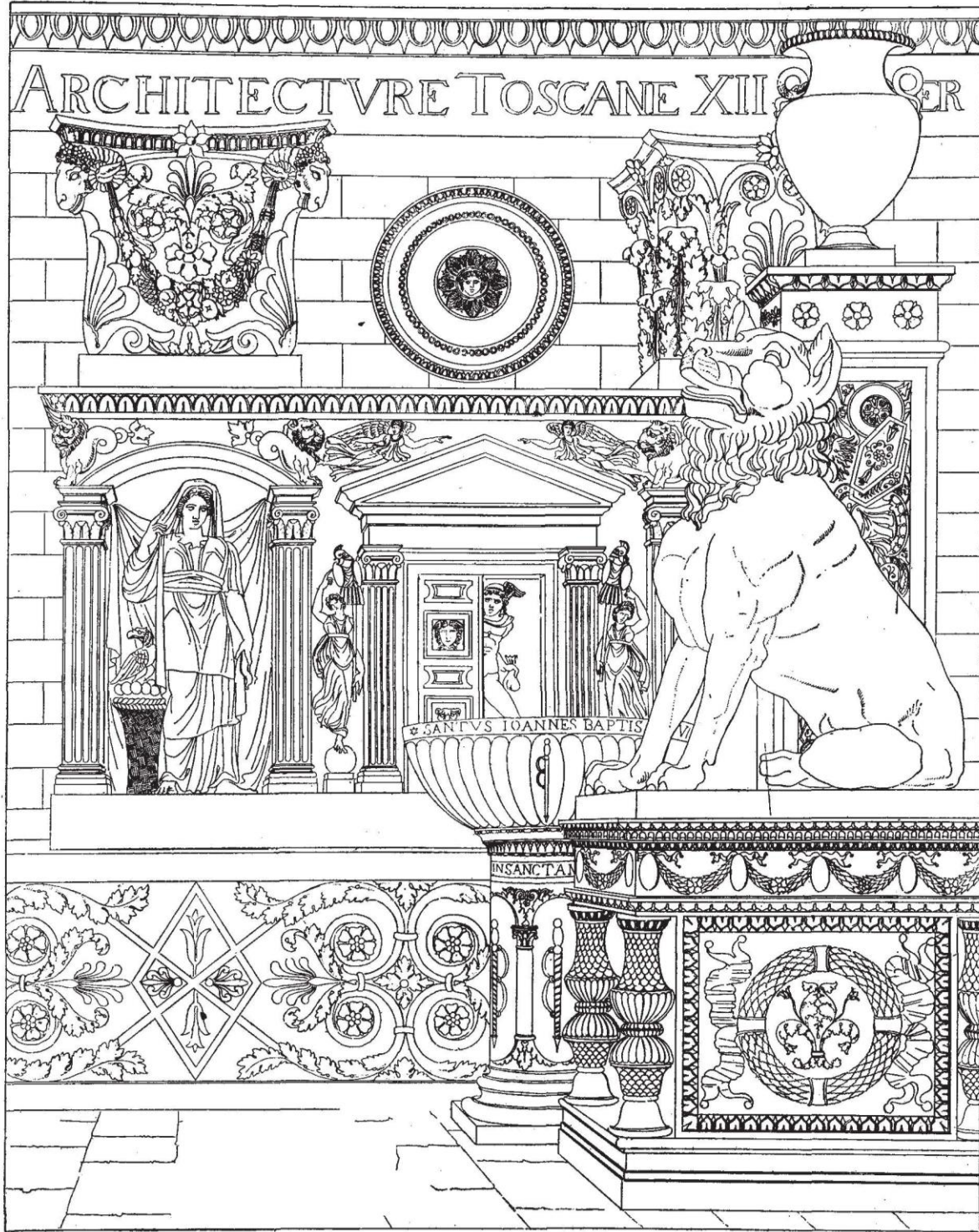


TEXAS TECH UNIVERSITY
Architecture Library™



Working Design for a Jewels Case. Half Inch Scale. N.d. Useful Designs and Details. (Chicago: Porter, Taylor & Co. 1901-02), 1 Plate 16.

For more coloring pages, visit [ColorOurCollections.org](https://www.ColorOurCollections.org)

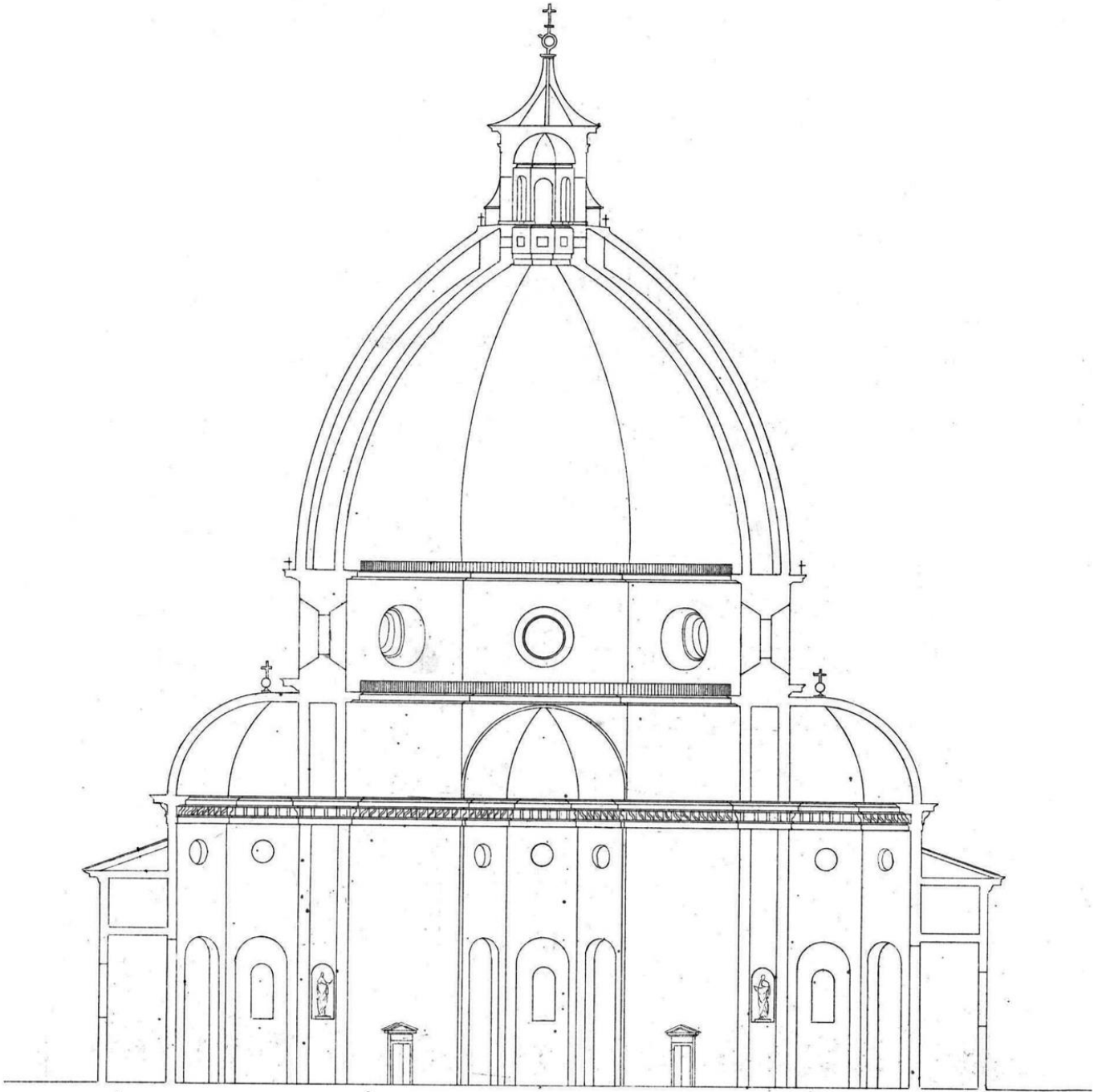


Frontispiece du douzieme cahier. N.d. Architecture Toscane. (New York: Pencile Points Press, Inc., 1923), Plate 68.



Coupole de S^{te} Marie des Fleurs, Fleurs, .

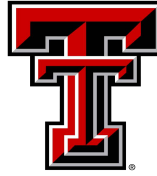
elevée par Philippe Brunelleschi, elles, etc, .



Jean-Nicolas-Louis Durand, *Couple de Ste. Marie de Fleurs, Fleurs. n.d. in Recueil et parallèle des édifices de tout genre, anciens et modernes ; remarquables par leur beauté, par leur grandeur ou par leur singularité, dessinés sur une même échelle. (Bruxelle : Meline Cans et c.1830 -1839?)*

#ColorOurCollections

This image is from the collection of



TEXAS TECH UNIVERSITY
Architecture Library™



American Architect, v.75(1359), 1908

For more coloring pages, visit ColorOurCollections.org